

# OSAKA・ KANSAI BUSINESS HANDBOOK

This handbook provides key insights into companies across the host region for Expo 2025 Osaka, Kansai, Japan, including details of related exhibitions and business events.

Discover exciting local businesses offering exclusive groundbreaking technologies and innovations.

Seize this unique opportunity to explore valuable prospects for growth!



This brochure was created to encourage businesspeople visiting Expo 2025 Osaka, Kansai, Japan, to explore business opportunities in the Kansai region, including Osaka Prefecture. The first half features a careful selection of 57 companies with cutting-edge and unique technologies, primarily based in Osaka.

All listed companies welcome visitors for corporate tours, so we hope you will visit companies and experience refined technologies at firsthand. We hope they will provide valuable insights for the growth of your business.

In the second half, you will find details on 30 exhibitions and business meetings scheduled to take place in Osaka and the broader Kansai region during Expo 2025. Through these events, we invite you to discover the strength and expertise of Kansai companies across various industries.

The final page offers resources and guidance for overseas companies looking for business partnerships with corporations in the Kansai region including Osaka. We encourage you to take full advantage of this information.

We hope this brochure meets your needs.



## Table of Contents

Welcome to Osaka and the Kansai Region! .....	3
Interviews on the Osaka Economy Chairperson of the Osaka Chamber of Commerce and Industry (OCCI) Secretary-General of the Japan Association for the 2025 World Exposition . . .	4
Map of Recommended Companies and Facilities .....	6
List of Recommended Companies Open to Visitors	
Life Sciences .....	8
Health Care .....	11
Carbon Neutrality .....	14
Cutting-Edge Craftsmanship .....	16
AI & Robotics .....	20
Other Advanced Technologies .....	21
Exhibitions and Business Meetings Set for 2025 in Osaka and the Kansai Region . . .	27
Calendar of 2025 Exhibitions and Business Meetings .....	28
List of Exhibitions and Business Meetings .....	29
Contact Information for Assistance and Advice for Overseas Companies . . .	39

The Kansai region has been a significant part of Japan's history since ancient times, serving for many centuries as the nation's political, economic and cultural center. Today, Kansai continues to thrive as a dynamic region, home to an array of companies, from traditional manufacturers to cutting-edge technology industries, boasting an economy second only to the Tokyo metropolitan area. Visitors from across Japan and around the world are drawn to Kansai's unique cities, including Osaka, the largest in western Japan; the bustling port of Kobe; and Kyoto and Nara, both renowned for their rich historical heritage.

Nobuo Kobayashi, head of the Osaka Research Center for Industry and the Economy, a think tank under the Osaka prefectural government, emphasizes, "Osaka Prefecture's economy is characterized by a well-balanced industrial structure, spanning from manufacturing to services, which is one of its key strengths." The breadth of manufacturing businesses operating in Osaka Prefecture is unparalleled in Japan, he notes. The extensive collection of

# Welcome to Osaka and the Kansai Region!

companies clustered in the region creates an environment that fosters collaboration among them.

The Kansai region, particularly Osaka, also hosts numerous service providers, including specialist trading houses, software development companies, and design and internet-related businesses, as well as accounting and management consulting firms. This diverse range of services creates a favorable environment that supports corporate activities.

Furthermore, the Kansai region is home to research and development centers for leading Japanese universities and companies, including Kyoto University, a global leader in induced pluripotent stem (iPS) cell research, Osaka University and Kobe University. Their presence offers extensive opportunities for industry-academia collaboration and joint development across a broad selection of fields, including life sciences and biomedical research.

A number of companies have chosen to expand into the Kansai region due to lower office rents, labor costs and living expenses compared with the Tokyo

metropolitan area, allowing businesses to keep their operational costs in check while offering a comfortable lifestyle for employees. In the suburban areas of Kansai, vibrant restaurant districts offer a wide variety of dishes, while cultural heritage sites, including world-famous temples and shrines, and beautiful mountains, seas, rivers and lakes provide ample opportunities for leisure--another key attraction of the region.

For businesses looking to expand into the Kansai region but unsure where to turn, the Osaka Business and Investment Center (O-BIC) is the go-to resource for help and advice. Between fiscal 2001 and fiscal 2023, O-BIC assisted in attracting 678 foreign companies to Kansai. The center provides guidance on establishing a business, as well as supplies information on office spaces and residences, while also offering advice on government subsidies. Inquiries can be made at +81-6-6944-6298 or via its website (<https://o-bic.net/>).

The 2025 World Exposition (Expo 2025 Osaka, Kansai, Japan) will take place on Yumeshima, an artificial island in Osaka Bay, from April 13 to October 13, 2025. Several hundred companies, including many from the Kansai region, are planning to participate, rotating weekly to showcase their expertise at booths and host events.

In addition to the companies running exhibition booths at Expo 2025, the Kansai region hosts numerous businesses with innovative technologies. In the carbon-neutral sector, one company produces high-strength eco-friendly plastics from scallop shells. The life sciences field includes a company engaged in research and development on health check methods using hair samples collected from beauty salons. Additionally, a startup spun off from an automotive engine parts manufacturer is applying its precision processing technology to the development of medical devices.

We hope you will experience the charm of Kansai firsthand, not only by touring the Expo venue but also by visiting local companies, attending exhibition events and business meetings, and exploring sightseeing spots, with this brochure in hand.



# Osaka: A City of Free Spirits



Interview with  
**TORII Shingo,**  
Chairperson of the Osaka Chamber of  
Commerce and Industry (OCCI)

## Special Interviews

# We speak with the chairperson of the OCCI and The OCCI chief discusses the while the Expo representative highlights

### Q: How would you describe Osaka?

With a history as the "capital of merchants" for over 400 years, Osaka is renowned as a business hub. What sets Osaka's industry apart is its relative freedom from political and administrative influence, creating a liberal and open environment where businesspeople engage in trade, taking on responsibilities themselves. This self-reliant approach, combined with a strong sense of hospitality and a local culture of close, direct communication, makes Osaka a particularly welcoming and business-friendly destination for international visitors.

### Q: What distinguishes the business landscape of Osaka?

In Tokyo, around 60% of businesses are large corporations, while the remaining 40% are small and medium-sized enterprises (SMEs). In Osaka, the situation is reversed: almost 60% of companies are SMEs, making Osaka a city fundamentally supported by smaller businesses. Many companies here are involved in manufacturing and are owner-managed. Some possess rare technologies and command up to 90% global market shares in specialized sectors. There are also the bluest of blue-chip artisan manufacturing companies achieving impressive operating profit margins of 20% or even 30%. Success for such companies is driven by presidents who are deeply passionate about technological innovation. Additionally, since many Osaka businesses are owner-managed, company presidents often maintain close ties with employees and are strongly committed to human resource development.

### Q: Are Osaka's businesses especially focused on craftsmanship?

A defining characteristic of Osaka's artisan manufacturing companies is their enduring free spirit and openness, centered on businesspeople, a tradition that has continued for over 400 years. When faced with customer requests, they never respond with, "I can't do that." Instead, they embrace even seemingly insurmountable challenges, striving to find solutions and building trust by fulfilling their responsibilities. Beyond their hospitality, Osaka merchants embody a "fighting spirit." I sense an indomitable

spirit in Osaka people's history, a resilience that aligns with the demands of business.

### Q: Could you share some exhibition plans for Expo 2025?

The Expo will showcase Nest for Reborn, an exhibition project for the Osaka Healthcare Pavilion. We've been preparing for this event for five or six years, collaborating with various stakeholders since the previous chairperson's tenure. I'm particularly excited about the "dream-inspiring technologies" that will be featured, innovations that may not have immediate applications but open up new possibilities. For example, there will be "photosynthesizing clothing," in which plants are incorporated into fabric. Another innovative concept, the "wellness office," reimagines the workplace as a contributor to health by developing and incorporating a device that can measure health indicators such as blood sugar and blood pressure easily and contact-free. There will also be a "flying truck" airship designed to transport thinned wood from mountainous regions inaccessible to vehicles. Such bold technological challenges foster growth for all involved.

### Q: Could you elaborate on your efforts to attract foreign companies to Osaka?

In 2023, the OCCI, along with business associations from the member countries of the Association of Southeast Asian Nations (ASEAN), launched the ASEAN-Japan Business Promotion Platform to further expand business and strengthen economic ties between Japan and ASEAN. To emphasize the importance of these exchanges, I have personally met with the heads of chambers of commerce and industry from six ASEAN countries. During Expo 2025, I will take part in an inaugural in-person round table with my counterparts from ASEAN countries. The Expo will be a valuable opportunity to welcome international visitors to Osaka and other parts of Japan, fostering exchanges, including among corporate executives. Additionally, we aim to strengthen our links with Japan-based chambers of commerce and industry from partner countries in the Group of Seven (G-7) club. I believe Expo 2025 presents an exceptional chance to accelerate such exchanges.

# the point person behind Expo 2025 Osaka, Kansai, Japan. latest industrial trends in Osaka, the event's most anticipated features.

**Q: Could you explain the theme of the Expo, "Designing Future Society for Our Lives"?**

Osaka was chosen as the host for Expo 2025 in November 2018. Since then, major global events such as the COVID-19 pandemic have underscored to everyone the significance of life. These developments have also highlighted the need to bridge divisions in our increasingly fragmented world. In response, we have built the Expo around the idea of "reconnecting the world and its people." This theme is embodied in the venue's design, notably the Grand Ring, which both physically and symbolically connects different parts of the site. Within this expansive structure, participating countries will have the chance to present comprehensive portrayals of themselves over the course of six months under the theme, "Designing Future Society for Our Lives." Each country will essentially say, "This is who we are as a nation" or "This is how our nation's science and technology, culture, history, and society have developed."

**Q: How is Japanese technology being utilized at the Expo?**

One of the most remarkable displays of Japanese technology will be an artificial heart that beats like a real heart, created with induced pluripotent stem (iPS) cells. This is a breakthrough made possible by collaboration between university researchers and businesses. Another standout is the Grand Ring, a symbol of the Expo, which will be one of the world's largest wooden structures when completed, spanning a circumference of about 2 kilometers. This iconic structure uses the traditional Japanese construction technique known as "nukikoho," which relies on intricate timber joints instead of nails, as seen in shrines and temples, adapted for a modern context. I'm certain that the Expo will offer a unique opportunity to experience such extraordinary Japanese technologies firsthand.

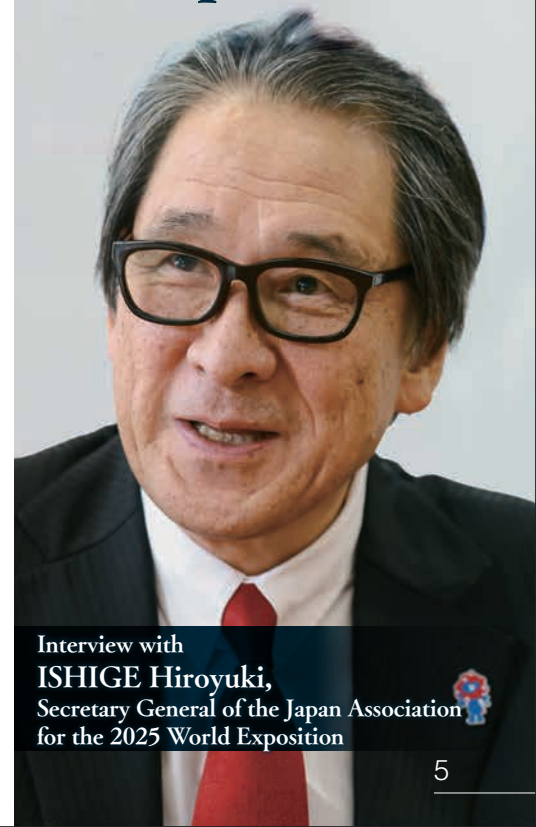
**Q: What business opportunities will be available to overseas companies?**

At the upcoming Expo, we are introducing an initiative called "Theme Weeks." During the "Health and Well-Being" week, for example, there are plans to hold a medical equipment trade show called "Japan Health," similar to Dubai's Arab Health, at an international site near the Expo venue. In addition, Japan's Ministry of Economy, Trade and Industry, along with organizations such as the Japan External Trade Organization (JETRO), will provide a variety of business-matching opportunities, including exhibitions and industry-specific meetings, in an effort to facilitate active business interactions between Japanese and foreign companies. Visiting business leaders will also have chances to experience the Kansai region's rich culinary culture and tourist attractions. Furthermore, over 400 companies are expected to take part in the Osaka Healthcare Pavilion, a project led by local governments and economic organizations in Osaka Prefecture, offering lucrative possibilities that I believe will win the interest of foreign companies.

**Q: Do you have a message for overseas businesspeople?**

First held in London in 1851, the Expo began as an industrial fair primarily showcasing products. It was a business opportunity. Today, trade shows have become increasingly specialized, competing to highlight cutting-edge technologies. Still, I think that attending trade fairs alone doesn't always offer a complete picture of technological advances. Science and technology do not exist in isolation; they are shaped by human experience. The Expo is unique in its ability to present both the latest innovations and visions for future human society. Through Expo 2025, we also hope to demonstrate how science and technology have supported us in economic terms. I encourage you to use this opportunity as a gateway to connect with Japanese business leaders and engage with Japanese companies. We sincerely look forward to welcoming you.

## Expo 2025: A Gateway to Connect with Japanese Companies



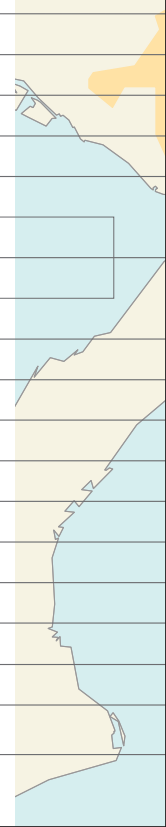
Interview with  
**ISHIGE Hiroyuki**,  
Secretary General of the Japan Association  
for the 2025 World Exposition

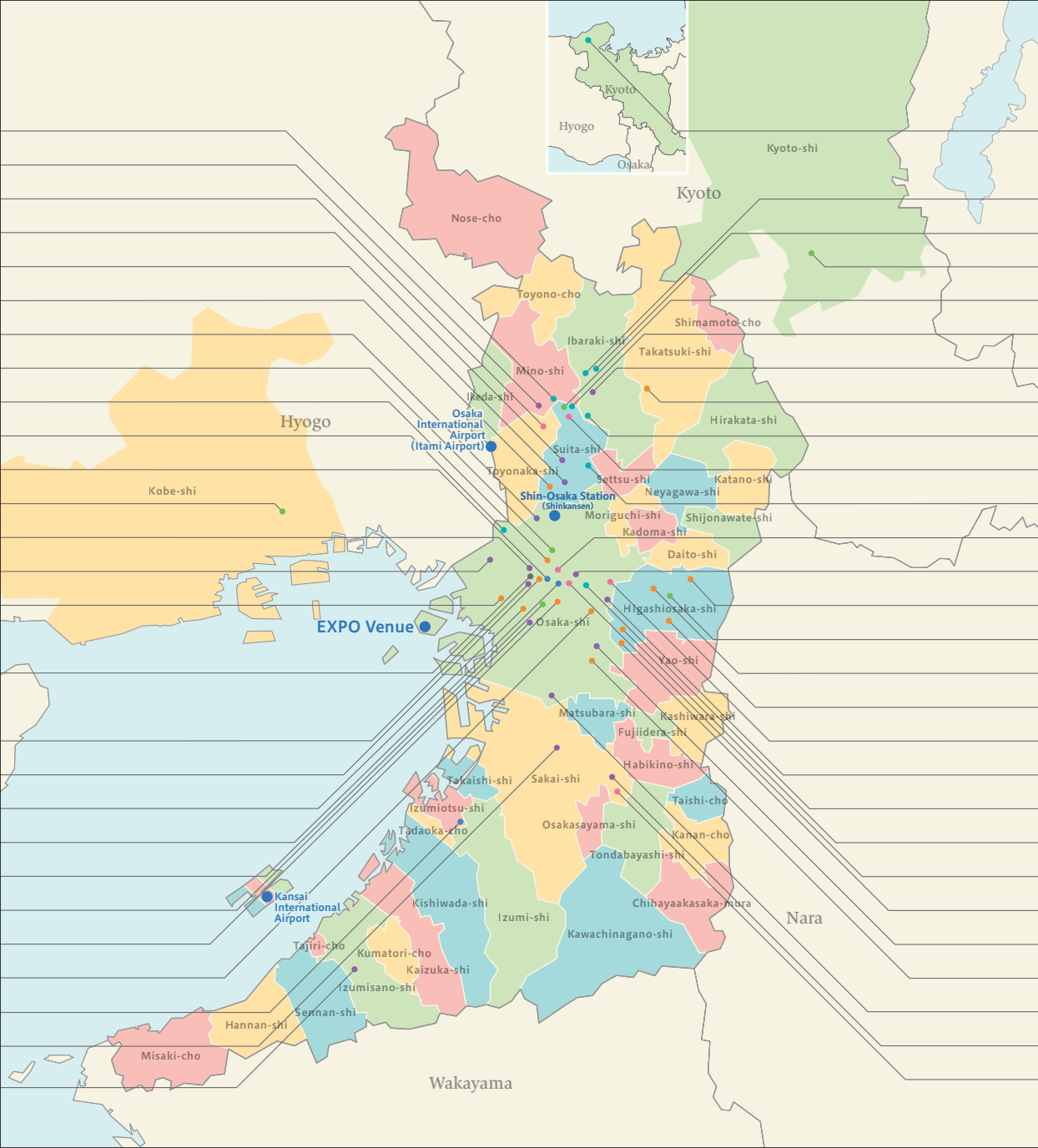


# List of 57 Recommended Companies in Osaka and the Kansai Region



- Osaka Heat Cool Inc. 10
- KUMONOS Co., Ltd. 10
- PaMeLa Inc. 7
- Innoqua Inc. 2
- KiwaChemical CO.,LTD 14
- TOHAN DENSHI KIKI CO.,LTD. 8
- Hutzper Inc. 7
- LEP Inc. 5
- Fujikin Incorporated 1
- FUKUSHIMA GALLILEI CO. LTD 8
- Chinoujijutsu Co., Ltd. 2
- Photo-on-Demand Chemical Co., Ltd. 2
- Komi-Hakko Corporation 1
- SHIN-MEN TEKKO Co. Ltd 5
- SEIKO SEIMITSU Co.,Ltd. 6
- PITTAN Inc. 2
- Katsujukai Memorial Clinic 5
- Sakurabashi Watanabe Adbanced Healthcare Hospital 11
- Tokai Spring industries, Inc. 6
- Kanai Juyo Kogyo Co.,Ltd 4
- TAMURA CORPORATION 12
- Thinker Inc. 3
- spicecube.inc 3
- Osaka Metro Co., Ltd 13
- REX INDUSTRIES CO.,LTD 2
- Kuboi Ink Co.,Ltd 3
- HCI CO.,LTD 1
- Research and Development Center for Plant Factories, Osaka Metropolitan University 15
- Smileearth Corporetion 16





- 9 Nissin FULFIL
- 1 StemRIM Inc.
- 7 I.B CO., LTD.
- 6 Renaissance Energy Research Corporation
- 4 Microwave Chemical Co., Ltd.
- 4 MATRIXOME, Inc.
- 8 Taisei Kako Co., Ltd.
- 9 Torishima Pump Mfg. Co., Ltd.
- 2 VisGene, Ltd.
- 4 Tellme Solutions Co.,Ltd.
- 3 IMMUNOSENS CO., LTD.
- 1 At Co.,Ltd.
- 3 E·C·R CORPORATION
- 10 Konishi Metal Mold Engineering LTD.
- 1 Koushi Chemical Industry Co., Ltd.
- 7 TAKENAKA SEISAKUSYO CO.,LTD
- 14 DG TAKANO Co.,Ltd.
- 3 oneA Co.,Ltd.
- 12 Arimitsu Industry Co.,Ltd.
- 6 Daido Industries, INC.
- 13 Plus Co.,Ltd.
- 5 Mirai Innovation Research Institute
- 11 MATSUDA PAPER INDUSTRY Co.,LTD.
- 11 GF HOLDING CO.,LTD
- 5 YAMAMOTO METAL TECHNOS CO., LTD.
- 4 Reallmage Inc.
- 9 Nissin Seal Industry Co.,Ltd
- 6 Morecosmetics Co., Ltd.



01



**StemRIM Inc.**

### Corporate Profile

StemRIM Inc. is a biotechnology company focused on developing Regeneration-Inducing Medicine™. This innovative technology employs a unique mechanism that addresses the limitations of conventional cell therapy and regenerative medicine. It enhances tissue regeneration by boosting the supply of stem cells, which are essential for tissue regeneration capacity. The administration of Regeneration-Inducing Medicine releases mesenchymal stem cells from the bone marrow into the peripheral bloodstream, increasing the overall circulation of stem cells in the body. This process facilitates the accumulation of stem cells in damaged tissues, thereby accelerating tissue reconstruction. StemRIM is currently conducting clinical trials for a variety of diseases, including dystrophic epidermolysis bullosa and acute ischemic stroke, attracting significant attention in the medical community.

### Availability of Company Tours

Free

- Communication in English: Possible
- Communication in other languages: Not possible

Non-business Day:  
Saturdays, Sundays,  
and National Holidays

Shuhei Uematsu,  
Business Administration  
Department  
Phone: +81-6-6170-2070  
E-Mail: uematsu@stemrim.com

### Address

Saito Bio Incubator  
3rd Floor 7-7-15 Saito  
Asagi, Ibaraki,  
Osaka Prefecture  
Phone: +81-72-648-7152  
URL: <https://stemrim.com/english/>



02



**VisGene, Ltd.**

### Corporate Profile

VisGene, Ltd. is a bio-venture company centered on genetic analysis technology, originating from Sanken, previously known as the Institute of Scientific and Industrial Research, at Osaka University. Guided by the principles of “miru” (see), “shiru” (learn), and “kaeru” (change), the company is dedicated to enhancing people’s lives through the visualization of microorganisms and genes. VisGene provides products and services aimed at addressing social challenges by leveraging a variety of advanced technologies. These include rapid testing technologies for infectious diseases, such as dengue and COVID-19; solutions that promote healthy longevity through the analysis of genetic disorders and bacteria linked to periodontal disease; technologies focused on analyzing bacterial flora to tackle health issues unique to women; and methods for the quick detection of alcohol in saliva and breast milk.

### Availability of Company Tours

Charged

- Communication in English: Possible
- Communication in other languages: Not possible

Non-business Day:  
Saturdays, Sundays,  
National Holidays  
and Year-End/New  
Year’s Holidays

Kunihiro Kaihatsu,  
Head Office  
Research Institute  
Phone: +81-6-4864-4566  
E-Mail: kaihatsu@visgene.com

### Address

Open Innovation Building  
OI-104 Sanken, Osaka  
University  
8-1 Mihogaoka, Ibaraki,  
Osaka Prefecture  
Phone: +81-6-4864-4566  
URL: <https://visgene.com/>



03



**IMMUNOSENS CO., LTD.**

### Corporate Profile

IMMUNOSENS CO., LTD. is a startup emerging from Osaka University, focused on developing a small, highly sensitive rapid point-of-care testing (POCT) device utilizing its proprietary electrochemical immunoassay method known as GLEIA. By combining immune response and electrochemistry, GLEIA enables the creation of a POCT device that is more sensitive, faster, simpler and more cost-effective than traditional immunoassay methods. The company’s vision is to allow “rapid medical-grade tests for anyone, anytime, anywhere,” fostering a world where individuals can lead long and healthy lives. The aim is the early detection of health issues and diseases across a range of contexts, from disease prevention to diagnosis and prognosis management.

### Availability of Company Tours

Free

- Communication in English: Possible
- Communication in other languages: Not possible

Non-business Day:  
Saturdays, Sundays,  
and National Holidays

Kumi Sakuhara, Sales  
& Marketing  
Phone: +81-6-6389-5501  
E-Mail: [k-sakuhara@immunosens.com](mailto:k-sakuhara@immunosens.com)

### Address

National Cerebral and  
Cardiovascular Center  
Open Innovation Lab  
30602  
6-1 Kishibe-shinmachi,  
Suita, Osaka  
Prefecture  
Phone: +81-6-6389-5501  
URL: <https://immunosens.com/en/>







## MATRIXOME, Inc.

### Corporate Profile

MATRIXOME, Inc. develops and sells cell culture substratum products based on research conducted at the Division for Matrixome Research and Application at Osaka University's Institute for Protein Research. The term "matrixome" describes the comprehensive interactions between cells and their extracellular environments, which significantly influence cellular fate in living organisms. Leveraging its research and development capabilities, the company aims to contribute to advances in regenerative medicine and microphysiological systems (MPS).



### Availability of Company Tours

Free

- Communication in English: Possible
- Communication in other languages: Not possible

Non-business Day: Saturdays, Sundays, National Holidays and Year-End/New Year's Holidays  
\*Please check in advance.

Yoichi Tsuyama,  
Sales and Marketing  
Department  
Phone: +81-6-6877-0222  
E-Mail: y-tsuyama@matrixome.co.jp

### Address

Osaka University  
Institute for Protein  
Research  
Joint Research  
Building 2F-A3  
3-2 Yamadaoka, Suita,  
Osaka Prefecture  
Phone: +81-6-6877-0222  
URL: <https://matrixome.co.jp/en/>



## Katsujukai Memorial Clinic

### Corporate Profile

Katsujukai is a medical corporation operating 15 clinics across Japan that specialize in regenerative medicine. As of August 2024, the group had handled a total of more than 36,000 cases of joint treatment. In particular, Katsujukai Memorial Clinic, in the Nakanoshima district of the city of Osaka, aims to help people live long lives in good health, as it fights aging by utilizing medical solutions relating to whole-body health based on its innovative cell therapy and state-of-the-art regenerative medicine technologies. Utilizing its excellent location at the Nakanoshima Gross medical complex, the clinic offers treatment with awareness of its role as an international medical facility. By strengthening cooperation with medical institutions and research laboratories around the world and sharing the latest technologies and research results with them, the clinic is resolved to improve the quality of its medical care and realize treatment from a global perspective.

### Availability of Company Tours

Free

- Communication in English: Possible if visitors are accompanied by an interpreter.
- Communication in other languages: Not possible

Non-business Day: None

Kazuki Obayashi  
Phone: +81-80-4450-5470  
E-Mail: obayashi@knee-joint.net  
Kimitaka Yoshino  
Phone: +81-90-4003-1300  
E-Mail: yoshino@knee-joint.net  
E-Mail: pr@knee-joint.net

### Address

Nakanoshima Gross,  
4-3-51 Nakanoshima,  
Kita Ward, Osaka,  
Osaka Prefecture  
Phone: +81-120-013-654  
URL: <https://www.katsuju-memorial.clinic/features/>



## Daido Industries, INC.

### Corporate Profile

Daido Industries, Inc. operates in the specialized field of blood transportation, employing unique techniques to ensure that blood is shaken continuously during transportation to prevent clotting at specific temperatures. The company has played a significant role in advancing blood-related services in Myanmar, Laos and Uzbekistan.

### Availability of Company Tours

Free

- Communication in English: Possible if visitors are accompanied by an interpreter.
- Communication in other languages: Burmese, Uzbek

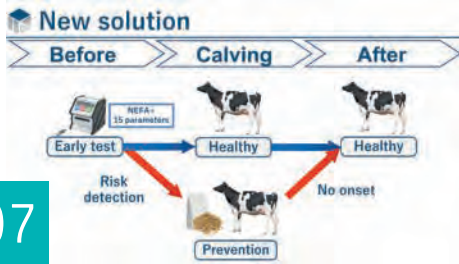
Non-business Day: Saturdays, Sundays, National Holidays, August 11th to 15th, and December 29th to January 3rd

Shinsuke Ogiri,  
Representative  
Director  
Phone: +81-6-6746-7141  
E-Mail: shinsuke\_ogiri@daido-ind.co.jp

### Address

1-4-15 Morinomiya  
Chuo, Chuo Ward,  
Osaka, Osaka  
Prefecture  
Phone: +81-6-6746-7141  
URL: <https://www.daido-ind.co.jp/en/>





07



**I.B CO., LTD.**

**Corporate Profile**

After starting as a trader exporting fresh food and grain produced in Japan and importing products such as food materials from overseas, I.B now mainly produces and sells in-vitro diagnostic agents for animals. It primarily promotes livestock farming and health management for beef cattle and dairy cows, while also making efforts to realize and spread preventive and remote medical care for such animals. The firm aims to help livestock farmers and large animal veterinarians in Japan work in sustainable ways and boost their profits.

**BoviLab : Bovine + Laboratory**



**Availability of Company Tours**

- Free
- \*Entry into facilities including a clean room may require a fee for consumable items such as sanitary equipment.
- Communication in English: Possible if visitors are accompanied by an interpreter.
- Communication in other languages: Not possible
- Non-business Day: Saturdays, Sundays, National Holidays, Summer Holidays and Year-End/New Year's Holidays
- Person in charge: Ryuzaki E-Mail: [info@ib-holdings.com](mailto:info@ib-holdings.com) Inquiry form also available on company website.

**Address**

Head Office: 4F Shonan Building, 1-14-10 Ginza, Chuo Ward, Tokyo  
 Facility Available for Tour: Rooms 104, 106 Saito Bio Innovation Center, 7-7-20 Saito-asagi, Ibaraki, Osaka Prefecture  
 URL: <https://ib-holdings.com/en/>



08



**FUKUSHIMA GALLILEI CO. LTD**

**Corporate Profile**

FUKUSHIMA GALILEI was the first in the industry to standardize commercial refrigerators in Japan. With temperature-control technology as its core, the firm continued to support food infrastructure as supermarkets took root in postwar society and the food service industry expanded. It manufactures products including commercial refrigerators, refrigerated display cabinets, and medical, science and chemical instruments, and also handles food factory and large warehouse engineering. In addition, the firm offers maintenance services for these products, along with temperature and hygiene management systems. Looking toward 2051, the company is making efforts to achieve net-zero greenhouse gas emissions under its "Dramatic Future 2050" environmental vision.



**Availability of Company Tours**

- Free
- Communication in English: Possible if visitors are accompanied by an interpreter.
- Communication in other languages: Not possible
- Non-business Day: Saturdays, Sundays, National Holidays, Summer Holidays and Year-End/New Year's Holidays
- Taku Fukushima (MILAB)  
 E-Mail: [fukushima.tak2@gallilei.co.jp](mailto:fukushima.tak2@gallilei.co.jp)  
 Inquiry form also available on company website (<https://www.gallilei.co.jp/contact/>)

**Address**

2-6-18 Takejima, Nishiyodogawa Ward, Osaka, Osaka Prefecture  
 URL: <https://www.gallilei.co.jp/en/>



09



**Nissin FULFIL**

**Corporate Profile**

Nissin FULFIL Co., Ltd. is a startup spun off from Nissin Manufacturing Co., Ltd., an automobile engine parts manufacturer. Leveraging its parent's expertise in precision component processing technologies, Nissin FULFIL develops innovative composite bone processing machinery for medical applications, allowing bone screws to be crafted from a patient's own bone during surgery. This breakthrough enables real-time processing of bone into screws in the operating room, reducing the need for multiple surgeries and promoting faster patient recovery. Through the development of medical devices, Nissin FULFIL aims to address the health care needs of people both in Japan and around the world.



**Availability of Company Tours**

- Free
- \*Guided tours, including a briefing on business operations, are available at the Osaka Office (Medical Equipment) under certain conditions. Please note that products currently in development are not open for public viewing.
- Communication in English: Possible if visitors are accompanied by an interpreter.
- Communication in other languages: Not possible
- Non-business Day: Saturdays, Sundays and National Holidays
- Toshio Kozato, Administration Department  
 Phone: +81-6-6308-4053  
 E-Mail: [toshio-kozato@nissin-mfg.co.jp](mailto:toshio-kozato@nissin-mfg.co.jp)

**Address**

Head Office: 225 Arayama, Mineyama-cho, Kyotango, Kyoto Prefecture  
 Osaka Office (Medical Equipment): 3-4-12 Tsukamoto, Yodogawa Ward, Osaka, Osaka Prefecture  
 Phone: +81-6-6308-4053  
 URL: <https://www.sbdi.jp/en/>



10



## Osaka Heat Cool Inc.

### Corporate Profile

Osaka Heat Cool Inc. was established mainly by university teachers to develop health care equipment based on hot and cold sensations utilizing Peltier devices. Although it is difficult to reproduce hot and cold sensations in particular, startup was the first to develop a related device that is compact and lightweight. Transmitting hot and cold sensations simultaneously makes it possible to reproduce a stimulus similar to scratching, and the company is advancing research with the top priority on using its technology to suppress itching. The company also reproduces a menstrual pain experience using electrical stimulation and develops toys for children with disabilities.



### Availability of Company Tours

Free

- Communication in English: Possible
- Communication in other languages: Not possible

Non-business Day: Saturdays and Sundays  
 Kenzo Imano, Minoh Laboratory  
 E-Mail: [info@osaka-heat-cool.com](mailto:info@osaka-heat-cool.com)

### Address

4-2 COM3-Gokan,  
 2-5-47 Senba-higashi,  
 Minoh, Osaka Prefecture  
 URL: <https://www.osaka-heat-cool.com/en/>



11



## Sakurabashi Watanabe Advanced Healthcare Hospital

### Corporate Profile

Sakurabashi Watanabe Advanced Healthcare Hospital relocated to Nakanoshima Qross, a medical complex in Osaka's Nakanoshima area, in April 2024. Equipped with the latest medical technology, the hospital continues to provide 24/7 cardiovascular tertiary emergency services. Along with advanced percutaneous coronary intervention (PCI) and arrhythmia treatment, the hospital offers open-chest surgeries, including open-heart procedures, as well as minimally invasive procedures, such as transcatheter aortic valve implantation (TAVI), in hybrid operating rooms. The facility also delivers high-precision imaging diagnostics using state-of-the-art CT and MRI technologies, enabling more accurate medical care. In addition, the hospital is actively involved in regenerative medicine, expanding its range of treatments by exploring innovations such as myocardial sheet technology.



### Availability of Company Tours

Free

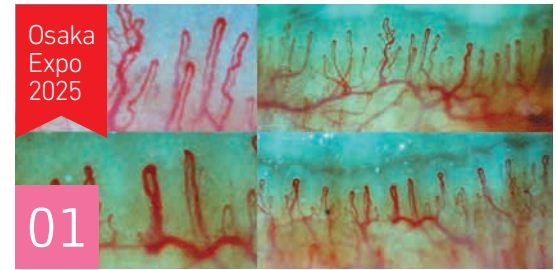
- Communication in English: Possible if visitors are accompanied by an interpreter.
- Communication in other languages: Not possible

Non-business Day: Sundays, National Holidays and the 3rd Saturday of Each Month

Tomoshige Samejima, General Affairs Section  
 Phone: +81-6-6676-8215

### Address

4-3-51 Nakanoshima, Kita Ward, Osaka, Osaka Prefecture  
 Phone: +81-6-6676-8215  
 URL: <https://www.watanabe-hsp.or.jp/>



Osaka Expo 2025

01



## At Co.,Ltd.

### Corporate Profile

At Co., Ltd. is a health technology startup originating from Osaka University, specializing in the development and manufacture of nailfold capillaroscopy (NFC). The company's proprietary capillary image analysis technology provides a system that facilitates easy health check-ups. Through joint research with government-affiliated research institute RIKEN, At Co. has patented a mechanism that integrates this system with blood tests. Additionally, in collaboration with Tohoku University, the company published research findings demonstrating that NFC is effective in detecting diabetic retinopathy. At Co. also offers a clinical testing service for health foods, serving a diverse clientele that includes universities, pharmaceutical companies, pharmacies, fitness centers and beauty salons. The company is actively recruiting local sales agencies in countries around the world.



### Availability of Company Tours

Free

\*Tours are available for the office, but not the factory.

- Communication in English: Possible
- Communication in other languages: Chinese

Non-business Day: Saturdays, Sundays and National Holidays

Dan Takeno, Administration Department  
 Phone: +81-90-5468-8535  
 E-Mail: [takenodan@kekkan-bijin.jp](mailto:takenodan@kekkan-bijin.jp)

### Address

Imagawa Building  
 3rd Floor 2-2-17  
 Imabashi, Chuo Ward, Osaka, Osaka Prefecture  
 Phone: +81-50-5876-8563  
 URL: <https://kekkan-bijin.jp/en/>

Osaka Expo 2025

02



**PITTAN Inc.**

### Corporate Profile

The health-tech startup specializes in analyzing sweat composition to provide insights into an individual's nutritional state to help him or her make better health decisions. Under the concept of "Technical Pop," the company has implemented highly credible science-based technologies into accessible health care services. Specifically, the company employs a noninvasive method to collect extremely small amounts of sweat easily and provides analysis results in 15 minutes on the spot using a portable analyzing device that utilizes a microfluidic device technology. It aims to analyze sweat data for all human beings, thereby contributing to solving healthcare problems for mankind.

### Availability of Company Tours

Free

- Communication in English: Possible
- Communication in other languages: Not possible

Non-business Day: Saturdays, Sundays, National Holidays, Summer Holidays and Year-End/New Year's Holidays

Yoshinori Nishikawa, Chief Operation Officer  
Phone: +81-90-9876-2434  
E-Mail: yoshinori.nishikawa@pittan.co.jp

### Address

6-1-3 Suidosuji, Nada Ward, Kobe, Hyogo Prefecture  
URL: <https://pittan.life/>



Osaka Expo 2025

03



**oneA Co.,Ltd.**

### Corporate Profile

The company has diverse operations, including metal cutting and processing, industrial LED lighting equipment, and amusement equipment. Also running a wellness business, it will showcase at Expo 2025 the "Sleeim" wearable device for snoring and apnea syndrome. When it detects snoring or apnea, Sleeim provides gentle vibratory stimulation to the wearer to induce natural breathing.



### Availability of Company Tours

Free

- Communication in English: Possible if visitors are accompanied by an interpreter.
- Communication in other languages: Not possible

Non-business Day: Saturdays, Sundays, National Holidays, Golden Week (April 29th, and May 3rd to 6th), Summer Holidays and Year-End/New Year's Holidays

Ryosuke Kawakami, Senior Managing Director  
Phone: +81-80-1384-1012  
E-Mail: r-kawakami@one-a.co.jp

### Address

3-30-20 Hanaten-higashi, Tsurumi Ward, Osaka, Osaka Prefecture  
Phone: +81-6-6962-7771  
URL: <https://www.one-a.co.jp/>

Osaka Expo 2025

04



**Tellme Solutions Co.,Ltd.**

### Corporate Profile

Founded in 1930, the company is a time-honored beauty salon operator. As part of efforts to retain customers, it has conducted research and development for "disease risk assessment using hair as a biological sample." Unlike body fluids such as blood and urine, "collecting, transporting and storing" is easy for hair, while power sources or devices are not necessary for hair sample handling. The technique can thus be accessed even in areas or countries where medical services are not widely available, such as remote islands or mountainous locations, and is therefore unique. Evidence from the firm's hair analysis will be announced at the IDF World Diabetes Congress 2025 in Bangkok in April. The company has already conducted demonstration tests in municipalities in Osaka Prefecture, confirming that the technique is effective for making people who are indifferent to health in particular aware of the need of health promotion. The service is expected to make contributions to the third U.N. sustainable development goal of "good health and well-being."

### Availability of Company Tours

Free

\* Reservations are required.

- Communication in English: Possible
- Communication in other languages: Not possible

Non-business Day: Mondays and Tuesdays

Kohei Yamamoto, Hair Analysis Business Department  
Phone: +81-90-3713-2924  
E-Mail: [info-h@senri.co.jp](mailto:info-h@senri.co.jp)

### Address

4-2-6 Furuedai, Suita, Osaka Prefecture  
Phone: +81-6-6872-4466  
URL: <https://glymap.senri.co.jp/>



Healthcare



## Mirai Innovation Research Institute

### Corporate Profile

The company focuses on research and development for advanced technologies and the supply of educational programs. Its R&D activities cover a wide range of fields, including robotics, neurotechnology, AI, blockchain, big data analysis, VR/AR, bioprinting, nanotechnology, and space technology. At Expo 2025, the company plans to provide, using its VR technology, a relaxing space in line with the cognitive state recognized from brain waves.



### Availability of Company Tours

Free

- Communication in English: Possible
- Communication in other languages: Spanish

Non-business Day: Saturdays and Sundays

Christian Penaloza, Management Department  
Phone: +81-6-6616-7897  
E-Mail: cpenaloza@mirai-innovation-lab.com

### Address

Head office: EDGE Honmachi Building, 2-3-12 Minamihonmachi, Chuo Ward, Osaka, Osaka Prefecture  
Laboratory: M-1-3, 6F, ITM Section, ATC Building, 2-1-10 Nankokita, Suminoe Ward, Osaka, Osaka Prefecture  
Phone(Laboratory): +81-6-6616-9899  
URL: <https://www.mirai-innovation-lab.com/>

Osaka Expo 2025

06



## Morecosmetics Co., Ltd.

### Corporate Profile

Haircare and skincare cosmetics maker Morecosmetics Co., Ltd. develops its products based on scientific evidence, giving the highest priority to minimizing burdens on the skin. It sells products via beauty salons and medical institutions so that people with skin issues and damaged hair can use them without worry. The company's sophisticated research and development capabilities have been highly evaluated. One of the firm's research papers has been published in a journal of the American Oil Chemists' Society, while it has won the "Editor's Award" from the Japanese Cosmetic Science Society. The company plans to offer its Badens Scalp Shampoo as a hand-washing detergent at Expo 2025 and exhibit its products at the Osaka Healthcare Pavilion at the event.



### Availability of Company Tours

Free

- Communication in English: Possible if visitors are accompanied by an interpreter.
- Communication in other languages: Not possible

Non-business Day: Saturdays, Sundays, National Holidays, Summer Holidays and Year-End/New Year's Holidays

Kazuya Kameda, Marketing Department  
Phone: +81-80-5789-5934  
E-Mail: kameda-k@morecosmetics.co.jp

### Address

4-12-15 Mokuza-dori, Mihara Ward, Sakai, Osaka Prefecture  
Phone: +81-72-363-5151  
URL: <https://www.morecosmetics.co.jp/>



## PaMeLa Inc.

### Corporate Profile

A startup from Osaka University, PaMeLa Inc. develops AI that quantifies pain levels. At present, there is no objective way to assess pain, so medical institutions have no choice for treatments but to rely on subjective evaluation, such as self-reporting from patients. As a result, pain cannot be evaluated correctly in clinical settings, with social issues emerging such as pain management ending in failure and pain becoming chronic. Based on large amounts of clinical data, the company is developing AI that quantifies pain in real time and with high accuracy on a scale of zero to 100. The firm has already completed exploratory clinical trials on the technology with a university hospital in Japan and is now in the phase of confirmatory clinical trials. In future, with the market introduction of the technology, the company aims to help solve social issues associated with pain.



### Availability of Company Tours

Free

- Communication in English: Possible
- Communication in other languages: Not possible

Non-business Day: Saturdays, Sundays, National Holidays and Several Designated Holidays

Yuka Nakahara, Management Department  
Phone: +81-6-6836-5373  
E-Mail: nakahara@pain-ml.com

### Address

6F Hankyu Senri Chuo Building, 1-4-1 Shinsenri-higashimachi, Toyonaka, Osaka Prefecture  
URL: <https://pain-ml.com/en/>

Osaka Expo 2025

01



**Koushi Chemical Industry Co., Ltd.**  
(A CDC-supporting company)

### Corporate Profile

Koushi Chemical Industry transforms discarded scallop shells into eco-friendly "SHELLMET" helmets, utilizing ecoplastics derived from the shells. This innovation reduces carbon dioxide (CO2) emissions by approximately 36% compared with traditional materials. The helmet's design incorporates a unique rib structure inspired by scallop anatomy, resulting in about 33% greater strength than conventional helmets. Damaged Hotamet helmets are also recyclable, either into new helmets or for use as building materials. By upcycling seashells, which previously contributed to around 40,000 tons of marine waste annually, the company is reducing industrial waste and helping preserve the seaside scenery of Sarufutsu, a village in Hokkaido famous for its large scallop harvests.

### Availability of Company Tours

Free

- Communication in English: Possible
- Communication in other languages: Not possible

Non-business Day: Saturdays, Sundays, National Holidays  
\*Tours are available on certain Saturdays.

Tetsuya Nambara, Planning and Development Department  
Phone: +81-50-3695-1808  
E-Mail: nambara.tetsuya@koushi-chem.co.jp

### Address

Head office: 1-12-20 Higashi-Obase, Higashinari Ward, Osaka, Osaka Prefecture  
Manufacturing base: 2-5-14 Hishie, Higashiosaka, Osaka Prefecture  
Phone: +81-72-962-6012  
URL: <https://koushi-chem.co.jp/en/>



Osaka Expo 2025

02



**Photo-on-Demand Chemical Co., Ltd.**

### Corporate Profile

Photo-on-Demand Chemical Co., Ltd. is a startup that uses methane-- a main component of biogas generated from sewage, livestock manure and garbage--chlorine generated from the electrolysis of seawater, and oxygen contained in the air as raw materials to produce active pharmaceutical ingredients and intermediates using light. Methane is a greenhouse gas with a global warming potential approximately 25 times greater than that of carbon dioxide, and there is a strong need to reduce emissions of it into the atmosphere. The company manufactures and sells high-value-added chemical products using biogas as a raw material, employing its patented manufacturing method, which is safe, inexpensive, simple, and environmentally friendly. The startup aims to contribute to U.N. sustainable development goals by forming a hub for manufacturing using light under an industry-government-academic-finance consortium.



### Availability of Company Tours

Free

\*The requirements for the company tour include that participants must be from countries and regions on Japan's "white" list of trading partners with preferential status and that they sign a nondisclosure agreement.

- Communication in English: Possible
- Communication in other languages: Not possible

Non-business Day: Saturdays, Sundays and National Holidays

Business Dept.  
Ayako Matsune  
Phone: +81-78-803-5696  
E-Mail: [info@photo-od-chem.co.jp](mailto:info@photo-od-chem.co.jp)

### Address

Kobe University, Graduate School of Science A228 1-1 Rokkodai-cho, Nada Ward, Kobe, Hyogo Prefecture  
Phone: +81-78-803-5696  
URL: <https://photo-od-chem.com>

Osaka Expo 2025

03



**spicecube.inc**

### Corporate Profile

Indoor agriculture, which does not require farmland, can solve many challenges, including low food self-sufficiency caused by the declining agricultural population, and spicecube.inc fs business model is not just building plant factories but also support the distribution of related products. The company can help farmers distribute products at their desired prices, which is most important for agricultural businesses. It is developing a system that allows indoor vegetables to absorb carbon dioxide emitted from offices and homes, while believing that indoor farming can also contribute to reducing carbon dioxide emissions by using LED lighting and cultivation technology that circulates nutrient solution.



### Availability of Company Tours

Charged

- Communication in English: Possible if visitors are accompanied by an interpreter.
- Communication in other languages: Not possible

Non-business Day: Sundays

Tsubasa Sugai, Representative Director  
Phone: +81-90-3627-2284  
E-Mail: [contact@spicecube.biz](mailto:contact@spicecube.biz)

### Address

1-1-30 Sakuragawa, Naniwa Ward, Osaka, Osaka Prefecture  
Phone: +81-6-7176-8705  
URL: <https://www.spicecube.biz/>



Carbon Neutrality



04



## Microwave Chemical Co., Ltd.

### Corporate Profile

Microwave Chemical Co., Ltd. has developed a technological platform for the use of microwaves. It develops and provides technologies to improve energy efficiency and reduce carbon dioxide emissions through microwave processes in a range of industrial fields including chemicals, steel, and metal smelting. At present, joint development projects are underway with more than 60 Japanese and foreign companies. Microwave Chemical is working to achieve carbon neutrality in the industrial domain through microwaves.



### Availability of Company Tours

Free

- Communication in English: Possible
- Communication in other languages: Not possible

Non-business Day: Saturdays, Sundays, and National Holidays

Yuri Katoda, Business Development Dept.  
Phone: +81-80-7010-8708  
E-Mail: info@mwcc.jp

### Address

Photonics Center 5F,  
2-1 Yamadaoka,  
Suita, Osaka  
Prefecture  
URL: <https://mwcc.jp/en/>



05



## LEP Inc.

### Corporate Profile

Inspired by luminous organisms in nature, such as fireflies and mushrooms, LEP Inc. is conducting research and development on plants that have “bright luminescent proteins.” We aim to develop “light emitting flowers” and “light emitting ornamental plants” for use as interior accessories, as well as “light emitting roadside trees” that can replace street lights. If realized, such “light emitting plants” will absorb CO2 through photosynthesis during the daytime, and at night light rooms and streets, like conventional illumination but without the use of electricity. They could be the ultimate eco-friendly lighting and therefore a critical key to resolving global warming and energy-related issues.



### Availability of Company Tours

Free

- Communication in English: Possible
- Communication in other languages: Not possible

Non-business Day: Saturdays, Sundays, and National Holidays

Taku Demura,  
Executive Officer  
Phone: +81-80-1172-9882  
E-Mail: taku.demura@start-lep.jp

### Address

267 1-1-3 Umeda,  
Kita Ward, Osaka,  
Osaka Prefecture  
URL: <https://www.start-lep.jp/en/home-2/>



06



## Renaissance Energy Research Corporation

### Corporate Profile

Renaissance Energy Research was established with the aim of developing businesses across a wide range of areas using catalyst-related technologies developed by founder Osamu Okada during his previous job, at Osaka Gas Co. Having obtaining rights from the earlier employer to manufacture, sell, and license related patents, Renaissance Energy Research sells catalysts for hydrogen production to chemical and oil companies in Japan and abroad. It also promotes applications of a carbon-dioxide selective permeable membrane developed in cooperation with Kobe University for carbon-dioxide separation and recovery. The membrane system developed by the company makes it possible to improve the efficiency, reduce the size and lower the cost of hydrogen stations. The company aims to promote application of the system to various fields, such as power generation exhaust gas, biogas and DAC(Direct Air Capture). Meanwhile, it has successfully developed a carbon-dioxide methanation catalyst with excellent low-temperature activity. It plans to advance the development of recycling technology for carbon dioxide recovered by membrane separation to contribute to the realization of a decarbonized society.

### Availability of Company Tours

Free

- Communication in English: Possible
- Communication in other languages: Not possible

Non-business Day: Saturdays, Sundays, National Holidays and Year-End/New Year's Holidays

Kunihiro Nakato,  
General Manager,  
Kyoto Development Center, Technical Headquarters  
Phone: +81-75-634-9817, +81-80-1510-1908  
E-mail: nakato@r-energy.com

### Address

105 Jibu-cho,  
Fushimi-ku, Kyoto-shi, Kyoto Prefecture  
Advanced Chemical Technology Center in Kyoto #102  
URL: <https://www.r-energy.com/>



Osaka Expo 2025

01



## Fujikin Incorporated

### Corporate Profile

Fujikin Incorporated engages primarily in the manufacture of fluid control systems, with focus on specialized valve equipment used across various industries. In particular, the company holds a leading market share globally for valves that regulate gas flows in semiconductor manufacturing equipment, according to its internal research. Fujikin is also actively developing products in the hydrogen sector, recognized as a promising next-generation energy. Fujikin Carp Group has a significant international presence, with operations in Japan, the United States, Ireland, Germany, South Korea, Vietnam, China, Taiwan, and Singapore. In addition, the company is committed to sustainability initiatives, including the farming of sturgeon, a species classified as endangered.



### Availability of Company Tours

Free

- Communication in English: Possible if visitors are accompanied by an interpreter.
- Communication in other languages: Korean

Non-business Day: Saturdays, Sundays, National Holidays, Golden Week (April 29th, and May 3rd to 6th), Summer Holidays and Year-End/New year's Holidays

Hideaki Yano, Administration Department at Osaka Factory - Kashiwara  
Phone: +81-72-977-4661  
E-Mail: h-yano@fujikin.co.jp

### Address

Kitahankyu Building  
1-4-8 Shibata, Kita Ward, Osaka, Osaka Prefecture  
Phone: +81-6-6372-7141  
URL: <https://www.fujikin.co.jp/en/>

Osaka Expo 2025

02



## REX INDUSTRIES CO.,LTD

### Corporate Profile

REX INDUSTRIES CO., LTD. works to contribute to the world through its innovative piping technologies that support vital infrastructure, exporting its products to approximately 80 countries. The company has established production or sales bases in the United States, China, Thailand and India. In addition to its traditional pipe-threading technologies, REX's product lineup features roll-threading machinery tailored for the Japanese market and fusion equipment essential for manufacturing polyethylene pipes, known for their earthquake resistance. Furthermore, the company's water treatment and conservation systems are utilized in both domestic water applications and aquaculture, addressing a variety of challenges. Also, REX's horse and amenity business division manufactures all-weather horse sand and sells feed, positioning the company as the only provider of such products in Japan.



### Availability of Company Tours

Free

- Communication in English: Possible
- Communication in other languages: Not possible

Non-business Day: Saturdays, Sundays, National Holidays, August 1st for our company anniversary, Summer Holidays and Year-End/New year's Holidays

Jun/Atsushi Hongo, General Affairs Department  
Phone: +81-72-961-9870  
E-Mail: hongo@rexind.co.jp

### Address

1-4-5 Nishishinsaibashi, Chuo Ward, Osaka, Osaka Prefecture  
Phone: +81-120-475-476  
URL: <https://www.rexind.co.jp/en/>

Osaka Expo 2025

03



## Kuboi Ink Co.,Ltd

### Corporate Profile

Kuboi Ink Co., Ltd. is a leading manufacturer of ultraviolet curable inks and functional printing inks, ranked as the second-largest producer of seal label printing inks in Japan, with an 11% market share. The company is renowned for its advanced anti-counterfeit technologies, boasting a remarkable 99% market share in anti-counterfeit inks specifically designed to prevent color copies of residence certificates and seal registration certificates in Japan. In addition, Kuboi Ink produces inks for electronic components and engages in the printing of fragrances. The company has earned recognition from the Japanese government as one of the "Companies Driving Regional Growth" and is listed among 300 promising small and medium-sized enterprises. Kuboi Ink is dedicated to upholding high standards in quality, environmental sustainability and personal information protection, earning ISO9001, ISO14001, and PrivacyMark certifications.

### Availability of Company Tours

Free

- Communication in English: Possible if visitors are accompanied by an interpreter.
- Communication in other languages: Not possible

Non-business Day: Saturdays, Sundays and National Holidays

Yuichiro Inoue, Sales and Marketing Department  
Phone: +81-6-6973-6211  
E-Mail: [inoue@kuboi.co.jp](mailto:inoue@kuboi.co.jp)

### Address

11-23 Higashi-Imazato 2-chome, Higashinari-ku, Osaka Prefecture  
Phone: +81-6-6973-6211  
URL: <https://www.kuboi.co.jp/en/>



Osaka Expo 2025

04



## Kanai Juyo Kogyo Co.,Ltd

### Corporate Profile

Founded in 1894, Kanai Juyo Kogyo Co., Ltd. is a B2B manufacturer specializing in metals and chemicals, with a rich history in the Kansai region of western Japan. The company operates two main divisions: its textile machinery business, based in Itami, which processes metal wires and is recognized as domestic market leader; and its non-woven fabric operations in Takarazuka, one of Japan's four pioneering businesses in this field. With over 80% of its sales generated from international markets, the textile machinery division boasts strong global brand recognition and power. The non-woven fabric division produces materials used in various applications, including filters for air conditioning systems in buildings, ceiling materials for automobiles, and medical devices. The company places a high priority on human resource recruitment and development, adopting a unique approach that emphasizes innovative recruitment practices rather than traditional methods.



### Availability of Company Tours

Charged  
\*Please inquire about details.

- Communication in English: Possible if visitors are accompanied by an interpreter.
- Communication in other languages: Not possible

Non-business Day: Saturdays, Sundays, National Holidays. Please check our calendar for details.

Shinya Ishikura,  
Suzuka Kakiyama,  
General Affairs Group  
Phone: +81-6-6346-1471  
E-Mail: kouhou@kanaijuyo.co.jp

### Address

1-2-9 Dojima, Kita Ward, Osaka, Osaka Prefecture  
Phone: +81-6-6346-1471  
URL: <https://www.kanaijuyo.co.jp/english/>

Osaka Expo 2025

05



## YAMAMOTO METAL TECHNOS CO.,LTD.

### Corporate Profile

With advanced processing operations and on-machine measurement technologies as core strengths, YAMAMOTO METAL TECHNOS CO., LTD. is engaged in four business areas: processing, manufacturing solutions, robot system integration, and engineer education support. With a corporate goal of "innovation in machining," the mission of the company is to contribute to solving social challenges such as labor shortages by fusing manufacturing and machining with currently evolving technologies. In recent years, the company has expanded into Vietnam. For the future, with a view to expanding its services globally, it is focusing on actively developing ASEAN-based sales channels.



### Availability of Company Tours

Free

- Communication in English: Possible if visitors are accompanied by an interpreter.
- Communication in other languages: Vietnamese

Non-business Day: Saturdays, Sundays, National Holidays. Open on some Saturdays per month.

Natsumi Nagatomo,  
Public Relations Group  
Phone: +81-6-6704-6561  
E-Mail: hayakawa@yama-kin.co.jp

### Address

2-4-7 Setoguchi, Hirano Ward, Osaka, Osaka Prefecture  
Phone: +81-6-6704-1800  
URL: <https://yama-kin.co.jp/en>

Osaka Expo 2025

06



## SEIKO SEIMITSU Co.,Ltd.

### Corporate Profile

SEIKO SEIMITSU Co., Ltd. is a precision parts processing manufacturer that specializes in multi-item, small-lot production and ultra-short delivery times. It processes metal parts for a wide variety of products, including automobiles, semiconductors, medical equipment, and industrial machinery. While specializing in processing palm-sized parts, it is particularly strong in manufacturing prototypes and one-of-a-kind parts. On the second floor of its headquarters plant, the company has an open innovation space called "Garage Minato," which brings together nearby small factories, researchers, and technology startups to develop new technologies and products.



### Availability of Company Tours

Free

- Communication in English: Possible if visitors are accompanied by an interpreter.
- Communication in other languages: Vietnamese, Chinese

Non-business Day: Sundays and National Holidays. Open on some Saturdays, depending on the company calendar.

Akihisa Takasugi,  
Sales Department  
Phone: +81-6-6586-5771  
E-Mail: [a.takasugi@seikou-seimitsu.com](mailto:a.takasugi@seikou-seimitsu.com)

### Address

1-4-35 Namiyoko, Minato Ward, Osaka, Osaka Prefecture  
Phone: +81-6-6586-5771  
URL: <https://www.seikouseimitsu.com/>



Cutting-Edge Craftsmanship

Osaka Expo 2025

07



**TAKENAKA SEISAKUSYO CO.,LTD**

### Corporate Profile

Using proprietary technologies, TAKENAKA SEISAKUSYO CO., LTD. provides high-quality products, including bolts and nuts made of specialty steel for huge structures such as bridges, social infrastructure such as expressways, and oil and nuclear power plants that require high durability and safety. The company's proprietary surface treatment technology, TAKECOAT-1000, provides high antirust and anticorrosion performance and durability even in harsh environments, as well as high lubrication performance. The company also offers TAKECOAT-CERAMIC1, which prevents seizing through high-temperature oxidation, and NANOTECH, a carbon nanotube composite high-strength and high-toughness coating film.

### Availability of Company Tours

Free

- Communication in English: Possible
- Communication in other languages: Not possible

Non-business Day: Saturdays, Sundays, National Holidays. A tour may not be available on certain weekdays.

Akito Kashihara, General Affairs  
Phone: +81-6-6789-1555  
E-Mail: kashihara@takenaka-mfg.co.jp

### Address

6-4-35 Hishie, Higashiosaka, Osaka Prefecture  
Phone: +81-6-6789-1555  
URL: <https://www.takenaka-mfg.co.jp/en/>



Osaka Expo 2025

08



**TOHAN DENSHI KIKI CO.,LTD.**

### Corporate Profile

Since its founding in 1984, TOHAN DENSHI KIKI CO., LTD. has created a wide variety of products based on its core motion control technology to meet customer demands, including printed circuit boards, controllers, and embedded devices. It has so far developed 1,700 models for 22 industries, including semiconductors and automobiles. Recently, the company has launched an IoT-related business that focuses on remote monitoring and has also worked on well-being products and services that make people feel more energetic and happy. At Expo 2025, the company plans to exhibit clothing that monitors people's vital information and automatically adjusts to the optimum temperature.



### Availability of Company Tours

Charged

- Communication in English: Possible if visitors are accompanied by an interpreter.
- Communication in other languages: Not possible

Non-business Day: Saturdays, Sundays and National Holidays

Asuka Shutou, Department: administration  
Phone: +81-6-6337-7100  
E-Mail: [asuka.shutou@tohan-denshi.co.jp](mailto:asuka.shutou@tohan-denshi.co.jp)  
(cc:[hitoshi.nagano@tohan-denshi.co.jp](mailto:hitoshi.nagano@tohan-denshi.co.jp))

### Address

29-1 Enoki-cho, Suita, Osaka Prefecture  
Phone: +81-6-6337-7100  
URL: <https://tohan-denshi.co.jp/>

Osaka Expo 2025

09



**Torishima Pump Mfg. Co., Ltd.**

### Corporate Profile

Torishima Pump Mfg. Co., Ltd. is a specialized pump manufacturer based in Osaka Prefecture and founded in 1919. It has strengths in pumps for water supply and sewerage facilities, power plants, and seawater desalination plants. The Japanese Ministry of Economy, Trade and Industry has selected Torishima Pump as one of its Global Niche Top Companies. In recent years, when heavy rains have caused extensive damage across Japan, the company has helped to making life safe and secure through its disaster prevention and mitigation technologies. It also contributes to reducing power consumption and carbon dioxide emissions by improving pump efficiency. In addition, it has been developing pumps for next-generation energy, successfully testing the world's first large-flow liquefied hydrogen pump.

### Availability of Company Tours

Free

- Communication in English: Possible if visitors are accompanied by an interpreter.
- Communication in other languages: Not possible

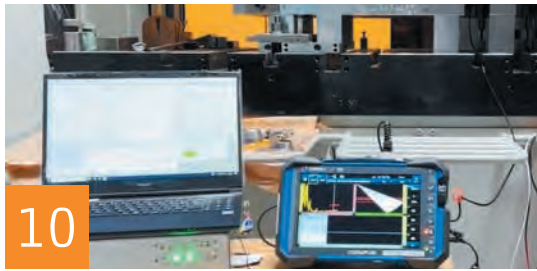
Non-business Day: Saturdays, Sundays, National Holidays, Golden Week (April 29th, and May 3rd to 6th) and Summer Holidays (about 1 week).

Jugja(Masako)An, Corporate Branding Section  
Phone: +81-72-695-0551  
E-Mail: [m-an@torishima.co.jp](mailto:m-an@torishima.co.jp)

### Address

1-1-8 Miyata-cho, Takatsuki, Osaka Prefecture  
Phone: +81-72-695-0551  
URL: <https://www.torishima.co.jp/en/>





10



## Konishi Metal Mold Engineering LTD.

### Corporate Profile

Konishi Metal Mold Engineering LTD.'s ultrasonic flaw detection system allows press machines and molds to constantly monitor products during processing. The system uses AI technology to detect minute defects at the initial stage, minimizing the waste rate to achieve long-term cost reductions and sustainable production. Thanks to the rich mold data the company has accumulated since its founding in 1968, it can carry out prompt and high-precision repairs and remodeling without drawings. In addition, its support services focused on the early identification and resolution of defect causes can help customers greatly improve production efficiency.



### Availability of Company Tours

Free

- Communication in English: Possible if visitors are accompanied by an interpreter.
- Communication in other languages: Not possible

Non-business Day: Saturdays, Sundays, and National Holidays

Haruto Konishi,  
Research and Development  
Department  
Phone: +81-72-981-3477  
E-Mail: k.haruto@konishi-kanagata.co.jp

### Address

6-4-47 Nakaishikiri-cho, Higashiosaka, Osaka Prefecture  
Phone: +81-72-981-3477  
URL: <https://www.konishi-kanagata.co.jp/?pl=true>



11



## MATSUDA PAPER INDUSTRY Co.,LTD.

### Corporate Profile

MATSUDA PAPER INDUSTRY Co., LTD., based in Higashiosaka, develops and sells cardboard furniture, following a massive earthquake and tsunami that struck northeastern Japan in 2011. Chests of drawers and children's desks that are made of cardboard are light and inexpensive, and they are popular because they can be replaced at low cost if children doodle on them. In cooperation with Kindai University, the company developed a well-designed cardboard stool. In recent years, it has been selling environment-friendly interior products such as beds and cafe tables.



### Availability of Company Tours

Free for factory-only tours.  
A fee applies for attending workshops.

- Communication in English: Possible if visitors are accompanied by an interpreter.
- Communication in other languages: Not possible

Non-business Day: Saturdays, Sundays, and National Holidays

Nahoko Tatsumi,  
Sales Department  
Phone: +81-6-6728-8501  
E-Mail: tatsumi@matsuda-siko.com

### Address

5-14-24 Kizuri, Higashiosaka, Osaka Prefecture  
Phone: +81-6-6728-8501  
URL: <https://matsuda-siko.com/>



12



## TAMURA CORPORATION

### Corporate Profile

TAMURA CORPORATION specializes in iron processing, producing a wide range of parts for bridges and roads at its small factory. As part of its innovative "TEPPEN Project," the company develops and markets original products crafted from factory scrap materials, including interior items such as S-shaped hooks and clips. Beyond manufacturing, the company actively participates in collaborative projects to create experiences and build for the future, working with major companies or through industry-academia-government partnerships.



### Availability of Company Tours

Charged

- Communication in English: Possible if visitors are accompanied by an interpreter.
- Communication in other languages: Not possible

Non-business Day: Saturdays, Sundays, and National Holidays

Yukiteru Tamura,  
Managing Director  
Phone: +81-90-5670-4762  
E-Mail: yukiteru.tamura@steel-tamura.com

### Address

2-17-28 Kujominami, Nishi Ward, Osaka, Osaka Prefecture  
Phone: +81-6-6583-1562  
URL: <https://steel-tamura.com/>



Osaka Expo 2025

13



Plus Co.,Ltd.

### Corporate Profile

The main line of business for Plus Co., Ltd. is the production and sale of its signature “turalist” toothbrushes, which are sustainable, nondisposable and entirely plastic-free. The eco-friendly toothbrushes are manufactured in Japan with responsibly sourced natural materials. The handles are crafted from beech wood chips, a byproduct of chair manufacturing, while the bristles are made primarily from horsehair, sourced from animals raised for food.

Key Milestones: Oct. 2021: Successfully reached its crowdfunding target.  
Feb. 2023: Flagship product certified as a Made-in-Osaka brand.  
Oct. 2023: Flagship product listed among the recommended local products for the Group of Seven (G-7) Trade Ministers’ Meeting in Osaka and Sakai.  
Dec. 2023: Flagship product received Special Award from the Ministry of the Environment’s Good Life Award Executive Committee.

### Availability of Company Tours

Free

- Communication in English: Possible if visitors are accompanied by an interpreter.
- Communication in other languages: Not possible

Non-business Day: Saturdays, Sundays, and National Holidays  
\*Factory tours are available on Wednesdays, Thursdays, and Fridays from 10:00 to 15:00.

Katsu Muranaka, Public Relations Department  
Phone: +81-90-3054-7210  
E-Mail: [muranaka.katsu@gmail.com](mailto:muranaka.katsu@gmail.com)

### Address

2-16-16 Kizuri, Higashiosaka, Osaka Prefecture  
Phone: +81-6-4309-5585  
URL: <https://nhes8739.com/>



14



DG TAKANO Co.,Ltd.

### Corporate Profile

With a mission to “save the world’s water,” DG TAKANO Co., Ltd. developed in 2009 the Bubble90 nozzle for industrial use, which can reduce water consumption by up to 95%. In 2023, the company introduced “meliordesign,” the world’s first\* tableware that can remove dirt with water alone, utilizing advanced surface modification technology powered by nanotechnology. These innovations demonstrate the company’s commitment to solving global water shortages. Currently, the company is working to develop new infrastructure that addresses not only water scarcity but also food shortages and energy-related issues through integrated solutions.

(\*The “world’s first” claim is based on DG TAKANO’s research, with a patent pending as of June 2023.)



### Availability of Company Tours

Free

\*A fee may apply to visitors depending on the scale and content of the tour.

- Communication in English: Possible
- Communication in other languages: Not possible

Non-business Day: Sundays  
\*A tour may not be available on certain Saturdays.

Ami Tsuzuki, President Office, Public Relations Department  
Phone: +81-70-1546-6677  
E-Mail: [tsuzuki@dg takano.co.jp](mailto:tsuzuki@dg takano.co.jp)

### Address

Tokyo Head Office: Seihou Building 7th Floor 2-21-3 Higashiueno, Taito Ward, Tokyo  
Osaka Branch Office, Factory: 4-6-24 Wakaehigashi-machi, Higashiosaka, Osaka Prefecture  
Phone: +81-6-7492-3466  
URL: <https://dgtakano.co.jp/>

01



HCI CO.,LTD

### Corporate Profile

HCI CO., LTD. specializes in robotics and AI technologies, providing robotic systems and AI solutions across various industrial sectors. The company’s strength lies in its ability to offer comprehensive one-stop services, from the development of robots and AI robotic systems to delivery and operational support, leveraging advanced technological capabilities honed over many years. Notably, HCI operates a unique employee cafeteria that is fully managed by robots and AI, the first of its kind in the world. This innovative facility not only showcases the company’s technological prowess but also makes important contributions to the local community.



### Availability of Company Tours

Charged (Lunch included)

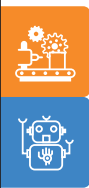
- Communication in English: Possible if visitors are accompanied by an interpreter.
- Communication in other languages: Not possible

Non-business Day: Mondays, Saturdays, Sundays, National Holidays and Other Designated Holidays

Chisato Okamoto, Administration Headquarters  
Phone: +81-725-90-6206  
E-Mail: [okamoto\\_chisato@hci-ltd.co.jp](mailto:okamoto_chisato@hci-ltd.co.jp)

### Address

3-14-10 Higashitoyonaka-cho, Izumiotsu, Osaka Prefecture  
Phone: +81-725-90-6206  
URL: <https://www.hci-ltd.co.jp/>



\* All times are indicated in Japan Standard Time.

Osaka Expo 2025

02



## CHINOUGIJUTSU CO.,LTD.

### Corporate Profile

Chinougijutsu Co., Ltd. is working to solve various social challenges by making full use of AI and robot technologies. It is developing robots for a range of purposes, including construction, firefighting, warehouse transportation and plant inspection, as well as automatic driving using generated AI, detection sensors for aging facilities, and AI for recognizing human actions. In particular, the company's strength is its ability to combine AI and robot technology to address dangerous and harsh working conditions and labor shortages at construction sites, fire sites, factories and warehouses, as well as on ships. Top-level universities and companies around the world are paying attention to the company's advanced technological capabilities.



### Availability of Company Tours

Free

- Communication in English: Possible
- Communication in other languages: Not possible

Non-business Day: Saturdays, Sundays, and National Holidays

CEO Ryoji Otsu  
Phone: +81-6-6362-1008  
E-Mail: [otsu@chinou.co.jp](mailto:otsu@chinou.co.jp)

### Address

Dojima Building  
#414, 2-6-8 Nishitenma, Kita Ward, Osaka, Osaka Prefecture  
Phone: +81-6-6362-1008  
URL: <https://www.chinou.co.jp/en/company/>

03



## Thinker Inc.

### Corporate Profile

Thinker, a startup from Osaka University, develops and sells pre-touch sensors, a next-generation product that detects the distance and inclination of an object to be grasped just before touching it. By using such a sensor, the fingertips of a robot hand are able to "explore and grasp" an object as if they are moving it. The company is working to spread the use of robot hands, previously limited to some big companies because of the need for large-scale facilities.



### Availability of Company Tours

Free

\*Reservations are required.

- Communication in English: Possible
- Communication in other languages: Not possible

Non-business Day: Saturdays, Sundays, and National Holidays

Kaori Tanabe, Sales and Marketing Department  
Phone: +81-6-4980-0465  
E-Mail: [sales@thinker-robotics.co.jp](mailto:sales@thinker-robotics.co.jp)

### Address

Osaka Center Building  
6F #188, 4-1-3 Kyutaro-machi, Chuo Ward, Osaka, Osaka Prefecture  
A company tour is offered at the following location:  
Development Base:  
6-5-2, Sakyo, Nara, Nara Prefecture  
URL: <https://www.thinker-robotics.co.jp/en/>

Osaka Expo 2025

01



## Komi-Hakko Corporation

### Corporate Profile

Komi-Hakko Corporation, a start-up company that originated in Osaka University, has developed and implemented a groundbreaking technology for quantifying odors. The technology overcomes the lack of defined odor quantification. The company provides a wide range of solutions for accurate odor analysis and recording. Komi-Hakko also has built an odor database which is used to reconstruct odors for transferring smells (called smell codes). This technology allows delivery of scents worldwide as well as in virtual spaces. In addition, the company built foul odor database, which is leveraging for deodorant development.



### Availability of Company Tours

Free

\*Non-disclosure agreement required.

- Communication in English: Possible if visitors are accompanied by an interpreter.
- Communication in other languages: Not possible

Non-business Day: Saturdays, Sundays, National Holidays, Golden Week (April 29th, and May 3rd to 6th), Summer Holidays and Year-End/ New Year's Holidays

Atsuko Mizota, General Affairs Department  
Phone: +81-6-6443-3630  
E-Mail: [info@komi-hakko.co.jp](mailto:info@komi-hakko.co.jp)

### Address

TAT Edobori Building 10th Floor 1-24-12 Edobori, Nishi Ward, Osaka, Osaka Prefecture  
URL: [https://komi-hakko.co.jp/wp-content/uploads/2021/09/English\\_ver\\_websute-1.pdf](https://komi-hakko.co.jp/wp-content/uploads/2021/09/English_ver_websute-1.pdf)



Osaka Expo 2025

02



Innoqua Inc.

### Corporate Profile

Under a guiding philosophy of "Continue to Watch the Nature We Love," Innoqua Inc. is dedicated to research and development for its proprietary Environmental Transfer Technology™. This reproduces diverse ecosystems in aquariums by combining the breeding expertise of aquarists with research methodologies. Building on this innovation, the company aims to "expand human possibilities and create a harmonious world where both people and nature can thrive." By recreating natural environments in controlled aquatic settings, Innoqua supports research projects that enable the study of various water ecosystems without the need for fieldwork, including in waterfront environments. The company also engages in educational initiatives aimed at raising awareness about the beauty and significance of marine life.



### Availability of Company Tours

Free

- Communication in English: Possible
- Communication in other languages: Not possible

Non-business Day: Saturdays, Sundays, National Holidays and Holidays  
Irregularly Scheduled on Weekdays  
\*Please check in advance.

Shiki Takeuchi, Research and Development Department  
Phone: +81-50-3702-1135  
E-Mail: info@innoqua.jp

### Address

Kansai Labo: Kansai University's Center for Innovation & Creativity 3-3-35 Yamate-cho, Suita, Osaka Prefecture  
URL: <https://corp.innoqua.jp/en>



03



E · C · R CORPORATION

### Corporate Profile

E C ER Corporation utilizes drones to inspect and repair infrastructure such as roads, bridges, ports, levees and seawalls. The unmanned aerial vehicles allow for the early detection of deterioration, enabling timely repairs and effective preventive maintenance. The company's Hien drone, fitted with specialized spraying equipment, applies various maintenance materials, such as concrete solidification agents, modification materials, and paint, to concrete and steel structures, utilizing different types of nozzles tailored for specific materials. This enables access to hard-to-reach areas, including the undersides and sides of structures, offering a feasible solution for maintenance tasks in locations where scaffolding or bucket vehicles are impractical. The technology facilitates comprehensive infrastructure maintenance.



### Availability of Company Tours

Free

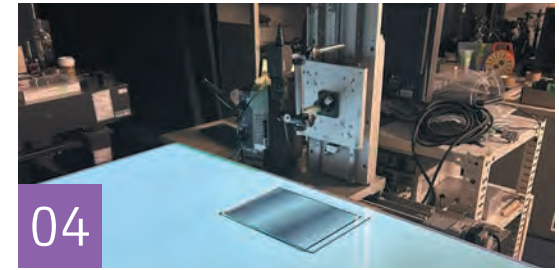
- Communication in English: Possible if visitors are accompanied by an interpreter.
- Communication in other languages: Not possible

Non-business Day: Saturdays, Sundays and National Holidays

Hiroyuki Watanabe, Facility Department  
Phone: +81-6-6946-5050  
E-Mail: info@ecr.jp.com

### Address

Twin 21 MID Tower 37th Floor 2-1-61 Shiromi, Chuo Ward, Osaka, Osaka Prefecture  
Phone: +81-6-6946-5050  
URL: <https://ecr.jp.com/>



04



ReallImage Inc

### Corporate Profile

ReallImage Inc. develops glasses-free 3D displays that offer eye friendly, high realism, superior image quality, and wide viewing angles. Compared with head-mounted displays, these 3D displays cause less visual discomfort and fatigue, making them easier to use. The displays can present 3D content in real time, whether generated through computer graphics or captured by cameras, making them suitable for a variety of applications including in education, entertainment, simulators, construction and medical fields. Founded in 2023, the company draws on over 30 years of technological and business experience from its core team. It has also been recognized as a venture originating from both Osaka Metropolitan University and Tokyo Institute of Technology, now part of Institute of Science Tokyo.

### Availability of Company Tours

Free

- Communication in English: Possible
- Communication in other languages: Not possible

Non-business Day: Saturdays, Sundays and National Holidays

Hideya Takahashi, Takafumi Koike  
E-Mail: info@reallimage.co.jp

### Address

Osaka Metropolitan University Incubator Osaka Metropolitan University Sugimoto Campus 3-3-138 Sugimoto, Sumiyoshi Ward, Osaka, Osaka Prefecture  
URL: <https://www.reallimage.co.jp/?lang=en>





Osaka Expo 2025

05

**SHIN-MEN TEKKO Co. Ltd**

**Corporate Profile**

SHIN-MEN TEKKO Co. Ltd. has strengths in anti-corrosion treatment for large steel structures, including bridges, plant equipment and industrial machinery. Operating under the motto "Preventing Corrosion for 100 Years," the company provides comprehensive anti-corrosion solutions, from surface blasting to thermal spraying and painting. In recent years, SHIN-MEN TEKKO has enhanced surface preparation efficiency through laser technology and introduced its own laser-processed products. Leveraging its advanced technological capabilities, the company has secured contracts with major clients, such as bridge construction companies, large theme parks and aerospace organizations, achieving significant accomplishments. Including its headquarters, the company operates four plants, located in Osaka, Hyogo and Toyama prefectures, which can accommodate large structures weighing up to 18 tons and measuring as much as 17 meters. SHIN-MEN TEKKO also offers on-site treatment services.



**Availability of Company Tours**

Free

- Communication in English: Possible if visitors are accompanied by an interpreter.
- Communication in other languages: Not possible

Non-business Day: Sundays and National Holidays  
 \*Open on about one Saturday per month. Please check our calendar for details.

Kaoru Murakami, DX Business Department  
 Phone: +81-6-6471-9555  
 E-Mail: murakami@shinmen-tekko.co.jp

**Address**

3-9-7 Chibune, Nishiyodogawa Ward, Osaka, Osaka Prefecture  
 Phone: +81-6-6471-9555  
 URL: <https://www.100nensabina1.jp/>



Osaka Expo 2025

06

**Tokai Spring industries Inc.**

**Corporate Profile**

Tokai Spring Industries Inc. is a manufacturer specializing in high-quality metal springs, particularly custom special springs. With over 40 years of experience in utilizing IT to develop its own production systems, the company excels in producing a wide variety of high-quality springs in small quantities, including as few as one to five units. The company is equipped to manufacture all types of metal springs, including the largest in the world, and consistently maintains a stock of special steel materials, including nickel-based alloys, titanium alloys and copper materials. Tokai Spring is well regarded for its design proposal and development capabilities, with its springs highly valued for their quality and performance. Notably, its products have been used in prominent structures, such as the Tokyo Skytree, and H-3 space rockets.



**Availability of Company Tours**

Free

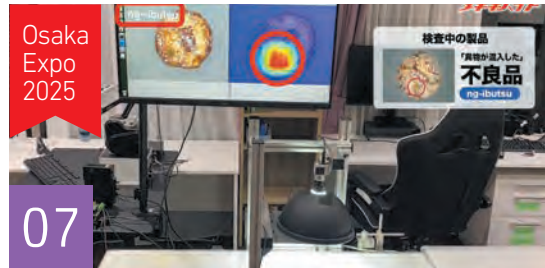
- Communication in English: Possible
- Communication in other languages: Vietnamese

Non-business Day: Saturdays, Sundays and Certain Fridays (one or two per month).

Hideobu Yoshikawa, Global Support Dept.  
 Phone: +81-6-6541-3591  
 E-Mail: clientsupport@tokaiweb.net

**Address**

Nishi-honmachi Intes 12th Floor 2-3-10 Nishi-honmachi, Nishi Ward, Osaka, Osaka Prefecture  
 Phone: +81-6-6541-3591  
 URL: <https://www.tokaibane.com/en/>



Osaka Expo 2025

07

**Hutzper Inc.**

**Corporate Profile**

Hutzper Inc. aims to work with clients as a partner for manufacturing industry in the field of digital transformation (DX) technologies that help to solve issues facing the sector, such as automation and labor-saving, and to provide AI that is truly useful on site. The company's strengths are enabling clients to introduce its services easily at prices that help them recover their investments early, making proposals that take the whole manufacturing process into account, and offering services as a tool that is truly helpful on site. Hutzper has developed advanced technologies that are truly valuable at manufacturing sites, based on insights gained from visiting more than 1,000 companies since its foundation. The company hopes to make contributions to the sustainable development of manufacturing industry, such as helping to make factories smarter, by supplying services capable of supporting clients from a variety of angles, including visual inspection AI.

**Availability of Company Tours**

Free

- Communication in English: Possible
- Communication in other languages: Chinese, Korean

Non-business Day: Saturdays, Sundays and National Holidays

Seiko Takarada, BizDev. Div., Marketing Dept.  
 Phone: +81-6-7777-2552  
 E-Mail: marketing@hutzper.com

**Address**

4F, Shin-osaka CSP Building North, 1-11-16 Nishi-nakajima, Yodogawa Ward, Osaka, Osaka Prefecture  
 Phone: +81-6-7777-2552  
 URL: <https://hutzper.com/en/>



Osaka Expo 2025

08



**Taisei Kako Co., Ltd.**

### Corporate Profile

Since its foundation, Taisei Kako Co., Ltd. has continued to work on developing clean containers with excellent functions and high safety and on accumulating related manufacturing technologies, mainly focusing on the production of pharmaceuticals containers. In addition, the firm has created environmentally friendly designs, developed new materials and manufacturing environments, and established know-how on various sterilization technologies. These have been used for a wide range of products, including medical goods such as resin containers compatible with various dosage forms, highly moisture-proof press through package (PTP) sheets, high-performance aluminum tube containers, injection vials, pump dispensers, prefilled syringes and test kits, as well as cosmetics containers, receiving high acclaim from numerous customers.



### Availability of Company Tours

Free

- Communication in English: Possible
- Communication in other languages: Not possible

Non-business Day: Saturdays, Sundays and National Holidays, Summer Holidays and Year-End/New year's Holidays

Daizo Udo, Global Business Department  
Phone: +81-72-643-5791

URL (Contact): <https://www.taisei-g.co.jp/english/form/index.php>

### Address

2-11-6 Fujinosato, Ibaraki, Osaka Prefecture  
Phone: +81-72-648-3600

URL: <https://www.taisei-g.co.jp/english/index.html>

Osaka Expo 2025

09



**Nissin Seal Industry Co.,Ltd**

### Corporate Profile

Manufacturing flexible packages is the main business area of Nissin Seal Industry Co.,Ltd. The firm has introduced state-of-the-art printing and pouch-making machines, and provides technology for high-quality printing and a range of manufacturing and processing technologies for pouches. In particular, it has a printing machine capable of employing up to 11 colors for gravure printing. It can also reproduce delicate designs and photographic images. For pouches, the company has an array of equipment and technologies, such as BXP machines, to make special products including spouts and shaped pouches, so it can offer optimal packages that meet a variety of customer needs. Moreover, the company is actively working to reduce environmental burdens by offering products that conform to the green purchasing law as well as items using biomass films and inks, introducing volatile organic compound (VOC) treatment equipment and cutting the amount of waste.



### Availability of Company Tours

Free

- Communication in English: Possible if visitors are accompanied by an interpreter.
- Communication in other languages: Chinese, Vietnamese

Non-business Day: Saturdays, Sundays and some National Holidays

Mai Yoshihara, Personnel Affairs and General Administration Department  
Phone: +81-72-362-5593

E-Mail: [mai.yoshihara@nissinseal.jp](mailto:mai.yoshihara@nissinseal.jp)

### Address

4-2-11 Mokuza-dori, Mihara Ward, Sakai, Osaka Prefecture  
Phone: +81-72-362-5593

URL: <https://nissinseal.co.jp/index.html>

Osaka Expo 2025

10



**KUMONOS Co., Ltd.**

### Corporate Profile

KUMONOS Co., Ltd.'s proprietary "KUMONOS" technology, which can detect cracks with a width of 0.2 millimeters from a distance of 100 meters, is the only one of its kind in the world. The high-precision measurement ability of the KUMONOS technology and the firm's "SHIN KUMONOS" system, which also employs high-resolution photography, enable safe and efficient inspections for large buildings, difficult with conventional methods, as well as external walls and other structures, including even those with hazardous conditions and in dangerous areas. Contactless damage measurement and analysis are possible. The company's 3D measurement technology, employing a 3D laser scanner that can collect one million points of point cloud data per second, has been used for a total of about 3,000 projects in Japan and abroad. Experienced technicians from the company analyze every structure three-dimensionally.



### Availability of Company Tours

Free

- Communication in English: Possible
- Communication in other languages: Lao, Thai

Non-business Day: Saturdays, Sundays, National Holidays, Summer Holidays (August 13-17, 2025) and Year-End/New year's Holidays

Xaysomphone Khen One, Marketing, Spatial Information Business, Business Headquarters  
Phone: +81-72-749-1188  
+81-90-6320-3777  
E-Mail: [khen@kumonos.co.jp](mailto:khen@kumonos.co.jp)

### Address

2-1-15 Sembahigashi, Minoh, Osaka Prefecture  
Phone: +81-72-749-1188

URL: <https://kumonos.co.jp/global/en/>







11



## GF HOLDING CO.,LTD

### Corporate Profile

GF HOLDING CO., LTD. champions the VEH concept, promoting an integrated fruit and vegetable industry. Guided by its mission to “save the world with fruits and vegetables,” the company operates across several sectors: V (vegetable): Processing and sales of fruits and vegetables E (environment): Production of eco-friendly disposable tableware and containers made from nonstandard fruits and vegetables, distribution surpluses, and unused by-products H (health): Development of dietary supplements, including VRC meals, veggie bars and veggie chocolates. The VAM (Vegetable Alternative Model) series offers edible and biodegradable disposable tableware and containers, providing an environmentally friendly alternative to plastic waste. Additionally, its health supplements harness the phytochemical benefits of fruits and vegetables, promoting overall wellness.

### Availability of Company Tours

Some are charged. Tours in English or Vietnamese are charged at 5,000 yen per hour per group.

- Communication in English: Possible
- Communication in other languages: Chinese, Vietnamese

Non-business Day: Sundays, Mondays and Fridays

Sakamoto Shibon, General Affairs Department  
Phone: +81-6-6757-8830  
E-mail: info@gf-holding.co.jp

### Address

2-6-21 Imabayashi, Sumiyoshi Ward, Osaka, Osaka Prefecture  
Phone: +81-6-6757-8830  
URL: <http://www.gf-holding.co.jp/>



12



## Arimitsu Industry Co.,Ltd.

### Corporate Profile

Arimitsu Industry Co., Ltd., established in 1923, has core strengths in high-pressure pump technologies, supplying products across a wide range of sectors, from agriculture to industrial applications. In the agricultural field, our innovative House Spray system enables automated spraying of ultra-fine particles as small as 2.5 microns for greenhouse pest controls; set to operate overnight, this system completes unmanned operations for crops and flowers by the next morning. In the industrial field, We offer a diverse range of high-pressure cleaning machines and systems designed to meet the cleaning demands of various sectors. Additionally, with increasing concerns over global warming, our fine mist cooling systems have also gained popularity as an effective solution for summer heat.



### Availability of Company Tours

Free

- Communication in English: Possible if visitors are accompanied by an interpreter.
- Communication in other languages: Not possible

Non-business Day: Saturdays, Sundays, National Holidays, Golden Week (April 29th, and May 3rd to 6th) and Summer Holidays (August 9th to 17th).

Kouji Niioka, General Affairs Department  
Phone: +81-6-6973-2001  
E-Mail: k-nioka@arimitsu.co.jp

### Address

1-3-7 Fukae Kita, Higashinari Ward, Osaka, Osaka Prefecture  
Phone: +81-6-6973-2001  
URL: <http://www.arimitsu.co.jp/english/index.html>



13



## Osaka Metro Co., Ltd

### Corporate Profile

Osaka Metro runs nine subway and railway covering a total distance of 137.8 kilometers, mainly in the city of Osaka. It also offers on-demand and other types of bus, taxi, bicycle sharing and related services to build diverse mobility networks as it seeks to create communities based around transportation. At Expo 2025, it will play a central role in transporting visitors on its Chuo subway line. It will also operate electric buses, including autonomous driving vehicles, inside and outside the venue. A vertiport will be set up outside the Expo venue to support operators of electric vertical take-off and landing (eVTOL) aircraft.



### Availability of Company Tours

Free

- Communication in English: Possible if visitors are accompanied by an interpreter.
- Communication in other languages: Not possible

Non-business Day: Even on business-days, tours are available only on limited days, so please enquire separately.

Mobility Creation Section, Next-Generation Mobility Promotion Division, Transportation Business Unit  
•Nakao (Deputy Manager)  
Phone: +81-90-6490-0746  
E-Mail: nakao-k739@osakametro.co.jp  
•Ohira (Staff)  
Phone: +81-80-3348-3799  
E-Mail: oohira-ya@osakametro.co.jp

### Address

Head Office: 1-12-62 Kujo-Minami, Nishi Ward, Osaka, Osaka Prefecture  
Tour Site: Central Pier Vertiport 1-105-5 Kaigandori, Minato Ward, Osaka, Osaka Prefecture  
URL: <https://www.osakametro.co.jp/en/>





14



## KiwaChemical CO.,LTD

### Corporate Profile

Kiwa Chemical has two business areas: the development and production of metal surface treatment agents; and sales of industrial chemicals, mainly activated carbon.

The company is a three-time recipient of aid under the Japanese Ministry of Economy, Trade and Industry's Go-Tech, or Growth-oriented SMEs Technology Development Support Grant Program, which is aimed at supporting efforts by small and midsize manufacturers to strengthen research and development capabilities.

It has developed innovative chemicals such as surface treatments for painting that hugely reduce environmental impacts and a lubricant for cold forging that can greatly shorten processes. Kiwa Chemical jointly created an automatic concentration management device that matches IoT, and the device won an award from a local industry bureau as an excellent new product made by a small or midsize manufacturer.

In 2025, the company plans to launch a new plant with a floor space of 2,000 square meters in Toyonaka, Osaka Prefecture, aiming to produce 4,000 tons of new types of chemicals per year.

### Availability of Company Tours

Free

- Communication in English: Possible if visitors are accompanied by an interpreter.
- Communication in other languages: Chinese

Non-business Day: Saturdays, Sundays, and National Holidays

Kenji Tanaka  
Phone: +81-6-6387-1340  
E-mail: k.tanaka@kiwachem.co.jp

### Address

2-20-25 Tarumi-cho, Suita, Osaka Prefecture  
Phone: +81-6-6170-6320  
URL: <https://www.kiwachem.co.jp/en/>



15



## Research and Development Center for Plant Factories, Osaka Metropolitan University

### Corporate Profile

The Research and Development Center for Plant Factories at Osaka Metropolitan University is one of the most advanced research and development bases for plant factories using artificial light in Japan. Visitors can access a factory that utilizes light-emitting diodes to produce 6,600 leafy lettuce plants per day, and research facilities of aquaponic systems combining the hydroponic cultivation of plants with land-based aquaculture of fish and materials recycling plant production systems.



### Availability of Company Tours

Charged

- Communication in English: Possible if visitors are accompanied by an interpreter.
- Communication in other languages: Not possible

Non-business Day: Saturdays, Sundays, National Holidays and Year-End/New year's Holidays (December 29th to January 3rd)

Secretariat of Research and Development Center for Plant Factories, Osaka Metropolitan University  
Phone: +81-72-254-9409  
Fax: +81-72-254-7692  
E-mail: [gr-krnky-pfc@omu.ac.jp](mailto:gr-krnky-pfc@omu.ac.jp)

### Address

Osaka Metropolitan University Nakamozu Campus Bldg.C-20 1-1 Gakuen-cho, Naka Ward, Sakai, Osaka Prefecture  
Phone: +81-72-254-9409  
URL: <https://www.omu.ac.jp/orp/plant-factory/en/>



16



## Smileearth Corporation

### Corporate Profile

Smileearth Corporation operates an award-winning towel factory in Izumisano, Osaka Prefecture, the city known as the birthplace of towel manufacturing in Japan. The company is led by the first skilled craftsman in the towel industry of the Senshu region to receive the Monodzukuri Nippon Grand Award from the Japanese government. Celebrating exceptional contributions to "monodzukuri," or artisan manufacturing, the honor recognized Smileearth's independent pioneering of a technological innovation that enables towel production with no reliance on chemical agents. This breakthrough helps to reduce river and ocean pollution caused by wastewater from towel factories. Visitors are invited to experience at firsthand the company's "nature towel factory," a facility designed for towel production in harmony with the local natural environment.

### Availability of Company Tours

Charged

\*Reservations are required for factory tours.

- Communication in English: Possible if visitors are accompanied by an interpreter.
- Communication in other languages: Not possible

Non-business Day: Year-End/New year's Holidays

Tatsumasa Oku  
Phone: +81-72-450-2018  
E-mail: [factory.tour.smileearth@gmail.com](mailto:factory.tour.smileearth@gmail.com)

### Address

2384 Kaminogo, Izumisano, Osaka Prefecture  
URL: <http://smileearth.co.jp/>





Osaka Industrial Creation Hall



Mydome Osaka



INTEX Osaka



Osaka International Convention Center (Grand Cube Osaka)

## Exhibitions and Business Meetings in the Kansai region

### INTEX OSAKA

1-5-102 Nankokita Suminoe-ku, Osaka City, Osaka Prefecture



### Osaka Industrial Creation Hall

1-4-5 Hon-machi, Chuo-ku, Osaka City, Osaka Prefecture



### EXPO Messe

Yumeshima, Konohana-ku, Osaka City, Osaka Prefecture

### Mydome Osaka

2-5 Hommachibashi Chuo-ku, Osaka City, Osaka Prefecture



### Osaka International Convention Center (Grand Cube Osaka)

5-3-51 Nakanoshima, Kita-ku, Osaka City, Osaka Prefecture



### Congrès Convention Center

North Building, 3-1 Ofukacho, Kita-ku, Osaka City, Osaka Prefecture



# 2025 Calendar of Exhibitions and Business Meetings

\*Please refrain from engaging in sales activities at the venues.

	Dates		Name of Exhibition	Venue
Apr.	16-18	1	Barrier Free 2025	INTEX Osaka
	24-25	2	Functional Fiber Fair 2025	Business Innovation Center Osaka
May.	7-11	3	Japanese "SHODO" : Extending to the Future~Sailing over the sky, sea and time~	EXPO Exhibition Centre "WASSE"
	14-16	4	Highly-Functional Material Week, Osaka	INTEX Osaka
	14-16	5	1st NEPCON JAPAN Osaka	INTEX Osaka
	14-16	6	1st Factory Innovation Week Osaka	INTEX Osaka
	28-29	7	eCommerce Fair Osaka 2025 (15th edition)	Mydome Osaka
	28-29	8	Marketing Technology Fair Osaka 2025 (7th edition)	Mydome Osaka
	28-29	9	CallCenter/CRM Demo & Conference 2025 in Osaka (18th edition)	Mydome Osaka
Jun.	5-6	10	Kansai RobotWorld 2025	INTEX OSAKA
	13-15	11	Interpets Osaka – A Fair for a Better Life with Pets –	INTEX OSAKA
	25-27	12	1st Japan Health	INTEX OSAKA
	27	13	Aroma Technology & Raw Materials Exhibition 2025	Business Innovation Center Osaka
Jul.	16-17	14	OPK2025 Optics & Photonics KANSAI 2025	Mydome Osaka
	16-19	15	Future Monodzukuri International EXPO 2025	INTEX Osaka
	21-23 <small>(July 20 is reserved exclusively for invited guests.)</small>	16	Study: Osaka Kansai International Art Festival Study × PLAS: Asia Art Fair	Osaka International Convention Center (Grand Cube Osaka)
	24-25	17	EdgeTech+ West 2025	Congres Convention Center in GRAND FRONT OSAKA
	24-25	18	Functional Film Exhibition 2025	Business Innovation Center Osaka
Sep.	5	19	Package Exhibition 2025	Business Innovation Center Osaka
	19	20	Cosmetic Manufacturing Technology Matching Fair 2025	Business Innovation Center Osaka
	24-26	21	LIFESTYLE Week OSAKA	INTEX Osaka
	24-26	22	COSME Week Osaka	INTEX Osaka
Oct.	1-3	23	Manufacturing World Osaka 2025	INTEX Osaka
	10	24	Upcycle Technology Exhibition 2025	Business Innovation Center Osaka
Nov.	12	25	Spatial Design Exhibition 2025	Business Innovation Center Osaka
	14	26	Food Processing Technology Exhibition 2025	Business Innovation Center Osaka
Dec.	12	27	Adhesion and Bonding Technologies Exhibition 2025	Business Innovation Center Osaka
	17-19	28	DX EXPO 2025 OSAKA Winter / Business Innovation Japan 2025 OSAKA Winter	INTEX Osaka
2026 Jan.	23	29	Design/Decoration Technology Exhibition 2026	Business Innovation Center Osaka
2026 Feb.	19-20	30	Highly-functional Plactic & Rubber Exhibition 2026	Business Innovation Center Osaka

## 1 INTEX Osaka

Date  
**04** Apr.  
**16** Wed.  
**04** Apr.  
**18** Fri.  
 10:00-17:00  
 ※ending at 16:00  
 on the last day

### Barrier Free 2025      Nursing Next 2025 Post-Acute Medicine Fair 2025      Home Medical Care 2025

This is one of the largest comprehensive shows in western Japan for nursing care, welfare, medical care and nursing. Highly regarded within the industries, the event offers an ideal opportunity for publicity to decision-makers and professionals seeking to enter or expand in the nursing care, welfare and medical sectors. The event aims to generate a diverse range of business opportunities through the joint hosting of four exhibitions: Barrier Free, Post-Acute Medicine Fair, Nursing Next, and Home Medical Care.

Data for Previous Event (Exhibitor/Visitor Numbers) **257 companies and organizations with 523 booths**  
**47,795 visitors**

Organizers: Osaka Prefecture Council of Social Welfare/Television Osaka Inc./TVQ EXPRO Ltd.  
 Address: 1-1-7, Otemae, Chuo Ward, Osaka, Osaka Prefecture Secretariat of Barrier Free  
 Phone: +81-6-6944-9913



## 2 Business Innovation Center Osaka

Date  
**04** Apr.  
**24** Thu.  
**04** Apr.  
**25** Fri.  
 April 24 (Day 1):  
 13:30-17:00  
 April 25 (Day 2):  
 10:00-16:00

### Functional Fiber Fair 2025

This event showcases textiles with added features such as use of sustainable materials, antibacterial and antiviral properties, high electrical conductivity, heat retention, water absorption, flame resistance and stretchability, as well as quick drying, while introducing technologies to provide such qualities.

Data for Previous Event (Exhibitor/Visitor Numbers) **43 Companies**  
**1,500 Visitors (Total Attendance)**

Organizers: Secretariat for Manufacturing Exhibition at Business Innovation Center Osaka, Osaka Business Development Agency  
 Address: Business Innovation Center Osaka, 1-4-5 Hon-machi, Chuo Ward, Osaka, Osaka Prefecture  
 Phone: +81-6-6264-9920 (10:00-12:00/13:00-17:30 on Weekdays Except National Holidays)  
 Fax: +81-6-6264-9899 E-Mail: monozukuri@sansokan.jp



## 3 EXPO Exhibition Centre "WASSE"

Date  
**05** May.  
**07** Wed.  
**05** May.  
**11** Sun.  
 9:00-21:00

### Japanese "SHODO" : Extending to the Future ~Sailing over the sky, sea and time~

The five-day exhibition is designed to promote "All-Japan Calligraphy" to the world. Contemporary "shodo" calligraphy works related to the theme of Expo 2025, "Designing Future Society for Our Lives," will be displayed on walls, a "washitsu" Japanese-style room will be reproduced, and "kakejiku" hanging scrolls, "tsuitate" screens and "byobu" folding screens will be exhibited. Meanwhile, state-of-the-art technologies will also be available, with visitors allowed to view the creation process for shodo works via VR technology and experience "air shodo," in which they can write calligraphy by hand without touch as their palm movements are detected and traced by an infrared sensor. In addition, calligraphy-writing and seal-carving sessions featuring highly skilled calligraphers, calligraphy performances by university students, interactive shodo works-viewing events, workshops, and brush- and ink-making demonstrations are scheduled to take place.

Organizers: Japan Calligraphic Art Academy, The Yomiuri Shimbu  
 Special Support: Japan Shodo Culture Association  
 Address: 7F OMM Building, 1-7-31 Otemae, Chuo Ward, Osaka, Osaka Prefecture

Phone: +81-6-6945-4501  
 E-Mail: info@nihonshogeiin.or.jp



## 4 INTEX Osaka

Date  
05 May.  
14 Wed.  
05 May.  
16 Fri.

### Highly-Functional Material Week, Osaka

This is the world's largest exhibition dedicated to cutting-edge materials technologies, including functional films, plastics, cellulose, carbon fiber composite materials, metals and ceramics. It highlights not only these materials but also a comprehensive range of technologies related to the materials industry, such as manufacturing and processing machinery, and inspection, measurement and analysis equipment. The exhibition attracts professionals involved in research and development, design, and manufacturing from a variety of industries, facilitating active business discussions with representatives of companies showcasing their technologies.

Data for Previous Event  
(Exhibitor/Visitor Numbers)

241 companies  
21,132 visitors

Organizers: RX Japan Ltd.  
Phone: +81-3-6739-4118  
E-Mail: visitor-eng.material.jp@rxglobal.com



## 5 INTEX Osaka

Date  
05 May.  
14 Wed.  
05 May.  
16 Fri.

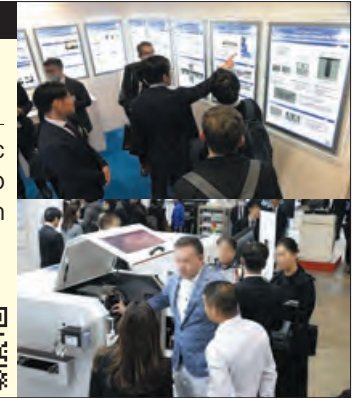
### 1st NEPCON JAPAN Osaka

Japan's leading exhibition for electronics R&D and manufacturing technology. The latest SMT, electronic components/materials and testing equipment, etc. will be showcased at the exhibition. Visit the show to find solutions for electronics R&D and manufacturing. The show will be held for the first time in Kansai in 2025.

Data for Previous Event  
(Exhibitor/Visitor Numbers)

Newly Launching in May 2025

Organizers: RX Japan Ltd.  
Phone: +81-3-6739-4102  
E-Mail: visitor-eng.inw.jp@rxglobal.com



## 6 INTEX Osaka

Date  
05 May.  
14 Wed.  
05 May.  
16 Fri.

### 1st Factory Innovation Week Osaka

FACTORY INNOVATION WEEK is Japan's leading exhibition gathering technologies & solutions for future factories. It consists of "SMART FACTORY Expo" (Exhibition for digital transformation technology in manufacturing), "RoboDEX" (Exhibition for robotics & automation technology), "GREEN FACTORY Expo" (Exhibition for sustainable manufacturing) and "Manufacturing Industry's HR Expo" (Exhibition for human resource solutions). The show will be held for the first time in Kansai in 2025.

Data for Previous Event  
(Exhibitor/Visitor Numbers)

Newly Launching in May 2025

Organizers: RX Japan Ltd.  
Phone: +81-3-6739-4102  
E-Mail: visitor-fiw-eng.jp@rxglobal.com



## 7 Mydome Osaka

Date

05 May.  
28 Wed.  
05 May.  
29 Thu.

### eCommerce Fair Osaka 2025 (15th edition)

This exhibition, which started in 2009 as Japan's first e-commerce and mail-order business event, now showcases a full range of the latest developments and knowledge related to online business, including the newest systems and operational know-how for the industry. It aims to support further industry development by providing solutions for issues facing e-commerce and mail-order service companies and online shop operators, and by holding seminars that offer information on the latest industry trends.

10:00-17:00

Data for Previous  
Event  
(Exhibitor/Visitor Numbers)

**26 companies**  
**1,359 visitors**

Organizers: Secretariat for eCommerce Fair  
Informa Markets Japan Co., Ltd.  
Address: 2F Kanda 91 Building, 1-8-3 Kaji-cho, Chiyoda Ward, Tokyo

Phone: +81-3-5296-1020  
E-Mail: info@ecfair.jp



## 8 Mydome Osaka

Date

05 May.  
28 Wed.  
05 May.  
29 Thu.

### Marketing Technology Fair Osaka 2025 (7th edition)

This exhibition is a major event focused on corporate marketing activities. The 2025 edition will be held in a conference format, featuring seminars and promotional activities as major pillars. Now at issue in the marketing industry is what it can do to help "the valuable products and services" of Japanese companies to be successful around the world in the future. The aim of the exhibition is to boost Japan's marketing strength and revitalize the domestic market.

10:00-17:00

Data for Previous  
Event  
(Exhibitor/Visitor Numbers)

**26 companies**  
**1,359 visitors**

Organizers: Secretariat for eCommerce Fair  
Informa Markets Japan Co., Ltd.  
Address: 2F Kanda 91 Building, 1-8-3 Kaji-cho, Chiyoda Ward, Tokyo

Phone: +81-3-5296-1020  
E-Mail: info@ecfair.jp



## 9 Mydome Osaka

Date

05 May.  
28 Wed.  
05 May.  
29 Thu.

### CallCenter/CRM Demo & Conference 2025 in Osaka (18th edition)

Held for the 18th time, the exhibition is one of the largest business events in western Japan, bringing together the latest trends and solutions in the call center/customer support industry as well as the knowledge of industry experts. With programs highlighting exhibits and seminars, the upcoming event will offer optimal promotional services, such as displaying the up-to-date solutions, providing business meeting opportunities, and introducing the latest case examples and know-how.

10:00-17:00

Data for Previous  
Event  
(Exhibitor/Visitor Numbers)

**68 companies**  
**2,770 visitors**

Organizers: Secretariat for CallCenter/CRM Demo & Conference  
Informa Markets Japan Co., Ltd.  
Address: 2F Kanda 91 Building, 1-8-3 Kaji-cho, Chiyoda Ward, Tokyo

Phone: +81-3-5296-1020  
E-Mail: info@callcenter-japan.com



## 10 INTEX Osaka

Date  
06 Jun.  
05 Thu.  
06 Jun.  
06 Fri.  
10:00-17:00

### Kansai RobotWorld 2025

The aim of the exhibition is to promote the development and expansion of markets for the robotics, mobility and space business industries. It aims to bring together people from technology developers and manufacturers in the industries and from corporate users of the technologies as well as personnel from universities, research institutes, local governments and central government agencies, seeking to provide opportunities for information exchanges and human interactions as part of efforts to help the industries thrive further.



Data for Previous Event  
(Exhibitor/Visitor Numbers)

15,596 visitors

Organizers: Secretariat for RobotWorld  
Exhibition Organizers Co.,Ltd.  
Address: 10-15-402 Shinsen-cho, Shibuya Ward, Tokyo,

Phone: +81-3-5489-7405  
Fax: +81-3-6735-7204  
E-Mail: info@srobo.jp

## 11 INTEX Osaka

Date  
06 Jun.  
13 Fri.  
06 Jun.  
15 Sun.  
10:00-17:00

### Interpets Osaka -A Fair for a Better Life with Pets-

The show serves as both a trade fair for professionals in the pet industry and a private pet event. It brings together a wide range of products and services related to pets, including pet food and supplies, IT appliances, furniture and travel, from both domestic and international exhibitors.



Data for Previous Event  
(Exhibitor/Visitor Numbers)

Exhibitors: 281  
Visitors: 18,710

Organizers: Interpets Osaka Organizer's Office  
Messe Frankfurt Japan Ltd.  
Address: 4F Sumitomo Fudosan Chiyoda Fujimi Building, 1-8-19 Fujimi Chiyoda Ward, Tokyo

Phone: +81-3-3262-8456  
E-Mail: info@interpets.jp

## 12 INTEX Osaka

Date  
06 Jun.  
25 Wed.  
06 Jun.  
27 Fri.  
10:00-17:00

### 1st Japan Health

Japan Health is an international trade fair that brings together healthcare professionals from Japan and abroad to showcase Japan's advanced technologies and medical services to the world, invigorate and improve the competitiveness of the Japanese medical community and healthcare industry as a whole, create innovation, and ultimately benefit medical institutions, patients, and society worldwide. The first event will be held in June 2025 in conjunction with "Health and Wellbeing Week," one of the eight "Theme Weeks" as a related event of Expo 2010 Osaka-Kansai. In addition to a large exhibition area, several seminars and matchmaking sessions will be held.



Data for Previous Event  
(Exhibitor/Visitor Numbers)

Newly Launching in  
June 2025

Organizers: Japan Health Committee  
Address: 2F Kanda 91 Building, 1-8-3 Kajicho, Chiyoda Ward, Tokyo  
Informa Markets Japan Co., Ltd.

Contact: Japan Health Organizer  
Phone: +81-3-5296-1034  
E-Mail: japanhealth-jp@informa.com



## 13 Business Innovation Center Osaka

### Aroma Technology & Raw Materials Exhibition 2025

Date  
06 Jun.  
27 Fri.

Taking part in this exhibition are companies with technologies, raw materials and products that can give high added value to products, spaces and services through the use of aromas. Among them are a number of businesses that have technologies, materials and original equipment manufacturer (OEM) arrangement know-how, and can thus support the development of new aroma-related products, look for new business partners capable of giving technological consultations and gather information useful for product differentiation.

10:30-16:30

Data for Previous  
Event  
(Exhibitor/Visitor Numbers)

50 Companies  
834 Visitors

Organizers: Secretariat for Manufacturing Exhibition at Business Innovation Center Osaka, Osaka Business Development Agency  
Address: Business Innovation Center Osaka, 1-4-5 Hon-machi, Chuo Ward, Osaka, Osaka Prefecture  
Phone: +81-6-6264-9920 (10:00-12:00/13:00-17:30 on Weekdays Except National Holidays) Fax: +81-6-6264-9899 E-Mail: monozukuri@sansokan.jp



## 14 Mydome Osaka

### OPK2025 Optics & Photonics KANSAI 2025

Optics & Photonics Kansai 2025 Symposium (parallel event) Briefing Session on Research Results by Institute for Laser Technology (parallel event) Seminar by Japan Society of Applied Physics Photonics Division (parallel event) Other Related Seminars (parallel event)

Date  
07 Jul.  
16 Wed.  
07 Jul.  
17 Thu.

Optics and photonics technologies are used in a wide variety of situations, but there were few opportunities to access information on photonics in the Kansai region until Optronics Co. launched the Optics & Photonics KANSAI technology exhibition in Osaka in July 2019. Ahead of Expo 2025, interest in science and technology is growing in the Kansai and western Japan regions, with attention focused on the optics and photonics products that are key to virtual reality and the augmented reality and robot technologies that are being introduced in earnest at the event. Optics & Photonics KANSAI, whose exhibitors include key Japanese companies dealing with optics, photonics and image measurement-related equipment, is a valuable platform for users in the Kansai and western Japan regions to experience cutting-edge optics technologies.

10:00-17:00

Data for Previous  
Event  
(Exhibitor/Visitor Numbers)

62 companies  
1,251 visitors

Organizers: Optronics Co., Ltd.  
Sanken Building 1st Floor  
Address: 5-5 Shin.ogawa-machi, Shinjuku Ward, Tokyo  
Contact: Organizer's Office  
Phone: +81-3-3269-3550  
E-Mail: event@optronics.co.jp



## 15 INTEX Osaka

### Future Monodzukuri International EXPO 2025

Date  
07 Jul.  
16 Wed.  
07 Jul.  
19 Sat.

The exhibition aims to bring together outstanding products and technologies that support industries, introducing them both domestically and internationally. It also seeks to foster business discussions and networking opportunities through exhibitions and forums. Additionally, the event will highlight the significance of Expo 2025 Osaka, Kansai, Japan, and its positive impact on manufacturing industry.

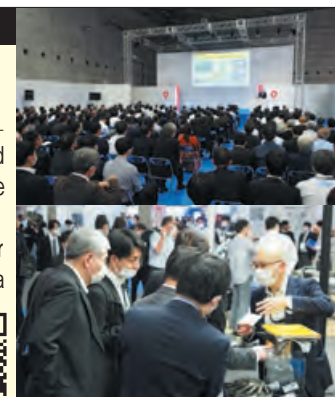
The exhibition will feature products and cutting-edge technologies that address industry challenges and help shape a brighter future for society. With an international symposium scheduled during the event, the organizers aspire to establish an international trade fair that is a proud showcase for Japan.

10:00-17:00  
(ending at 16:00 on  
the last day)

Data for Previous  
Event  
(Exhibitor/Visitor Numbers)

187 companies and organizations with 368 booth sections  
13,210 visitors

Organizers: Future Monodzukuri International EXPO Executive Committee  
Address: 2-16 Kitahama-higashi, Chuo Ward, Osaka, Osaka Prefecture  
Contact : Secretariat for Future Monodzukuri International EXPO  
Nikkan Kogyo Shimbu Ltd.  
Phone: +81-6-6946-3384  
E-Mail: fmiexpo@nikkan.tech



## 16 Osaka International Convention Center (Grand Cube Osaka)

Date  
**07** Jul.  
**21** Mon.  
**07** Jul.  
**23** Wed.

### Study: Osaka Kansai International Art Festival Study × PLAS: Asia Art Fair

Study × PLAS: Asia Art Fair, which is part of Study: Osaka Kansai International Art Festival 2025, held to coincide with Expo 2025, is a comprehensive art and creative fair to commemorate the 60th anniversary of the normalization of diplomatic relations between Japan and South Korea and to build future-oriented cultural and artistic relations among the two countries and the broader Asian region. NFT.OSAKA, a large-scale international conference on non-fungible token arts, will take place simultaneously. Study × PLAS: Asia Art Fair will bring together a wide variety of art-related people during the week that the Tenjin Matsuri festival takes place in the city of Osaka.

<Invitation-Only  
 Preview & Vernissage>  
 July 20 (Sun.), 2025

Data for Previous  
 Event  
 (Exhibitor/Visitor Numbers)

**36 companies and organizations**  
**1,500 visitors**

Organizer: Osaka Kansai International Art Festival  
 Executive Committee, (ARTLOGUE Inc.)  
<https://osaka-kansai.art/>

Address: Osaka International Convention Center  
 (Grand Cube Osaka) 3rd, 10th, 12th Floors 5-3-51  
 Nakanoshima, Kita Ward, Osaka, Osaka Prefecture

Phone: +81-6-6467-8656  
 E-Mail: [study\\_artfair@artlogue.jp](mailto:study_artfair@artlogue.jp)



## 17 Congres Convention Center in GRAND FRONT OSAKA

Date  
**07** Jul.  
**24** Thu.  
**07** Jul.  
**25** Fri.  
 10:00-17:00

### EdgeTech+ West 2025

EdgeTech+ West 2025 is an exhibition for sharing trends in the latest technologies, such as AI, generative AI, IoT, embedded systems and security, as well as their implementation in industrial fields. In an era of business transformation, the event realizes customer-driven value creation through the addition of edge technology. The event covers AI/Generative AI, IoT, Safety & Security, Wireless, Embedded Hardware/Semiconductor Devices, Embedded Software, Development Support, Development Environment, Cloud Native, Lean & Agile, DevOps, Reskilling/Software Human Resource Development, Open Source Software, SDV, Vision AI.

Data for Previous  
 Event  
 (Exhibitor/Visitor Numbers)

**125 companies and organizations**  
**5,885 visitors**

Organizer: Japan Embedded Systems Technology Association (JASA)  
 Event Planning and Promotion: NANO OPT Media, Inc.  
 EdgeTech+ Show Management Office (NANO OPT Media, Inc.)

E-Mail: [edgetech-info@f2ff.jp](mailto:edgetech-info@f2ff.jp)



## 18 Business Innovation Center Osaka

Date  
**07** Jul.  
**24** Thu.  
**07** Jul.  
**25** Fri.  
 July 24 (Day 1):  
 13:30-17:00  
 July 25 (Day 2):  
 10:00-16:00

### Functional Film Exhibition 2025

Featured in this exhibition are companies proud to offer processing technologies for films and sheets with excellent features, such as electrical conductivity, gas barrier properties, heat insulation and environmental responsiveness. Also on display are biomass materials, recycled plastic bottles and other environmentally friendly products. Film technologies are used across a wide range of fields, such as electronics including displays, automobiles, food, and medical equipment and pharmaceuticals.

Data for Previous  
 Event  
 (Exhibitor/Visitor Numbers)

**56 Companies**  
**1,312 Visitors (Total Attendance)**

Organizer: Secretariat for Manufacturing Exhibition at Business Innovation Center Osaka, Osaka Business Development Agency  
 Address: Business Innovation Center Osaka, 1-4-5 Hon-machi, Chuo Ward, Osaka, Osaka Prefecture  
 Phone: +81-6-6264-9920 (10:00-12:00/13:00-17:30 on Weekdays Except National Holidays) Fax: +81-6-6264-9899 E-Mail: [monozukuri@sansokan.jp](mailto:monozukuri@sansokan.jp)



## 19 Business Innovation Center Osaka

Date  
09 Sep.  
05 Fri.

### Package Exhibition 2025

This exhibition is about the manufacture, materials and design of consumer goods packaging, bringing together an array of businesses with technologies and expertise helpful for product development and branding as well as packaging renewal. The event is ideal for companies aiming to promote product differentiation and give high added value to their products.

10:30-16:30

Data for Previous  
Event  
(Exhibitor/Visitor Numbers)

58 Companies  
905 Visitors

Organizer: Secretariat for Manufacturing Exhibition at Business Innovation Center Osaka, Osaka Business Development Agency  
Address: Business Innovation Center Osaka, 1-4-5 Hon-machi, Chuo Ward, Osaka, Osaka Prefecture  
Phone: +81-6-6264-9920 (10:00-12:00/13:00-17:30 on Weekdays Except National Holidays) Fax: +81-6-6264-9899 E-Mail: monozukuri@sansokan.jp



## 20 Business Innovation Center Osaka

Date  
09 Sep.  
19 Fri.

### Cosmetic Manufacturing Technology Matching Fair 2025

This event showcases cosmetics-manufacturing technologies, including for raw materials development and processing, along with product filling and product packages. Also featured are cosmetics-related know-how and expertise, such as outsourcing contracts covering the full process from product planning to commercialization.

10:30-16:30

Data for Previous  
Event  
(Exhibitor/Visitor Numbers)

42 Companies  
755 Visitors

Organizer: Secretariat for Manufacturing Exhibition at Business Innovation Center Osaka, Osaka Business Development Agency  
Address: Business Innovation Center Osaka, 1-4-5 Hon-machi, Chuo Ward, Osaka, Osaka Prefecture  
Phone: +81-6-6264-9920 (10:00-12:00/13:00-17:30 on Weekdays Except National Holidays) Fax: +81-6-6264-9899 E-Mail: monozukuri@sansokan.jp



## 21 INTEX Osaka

Date  
09 Sep.  
24 Wed.  
09 Sep.  
26 Fri.

### LIFESTYLE Week OSAKA

A comprehensive B2B trade show that showcases modern lifestyle products. The show features specialized exhibitions for gifts, lifestyle goods, beauty products, gourmet gifts, fan merchandise, and goods targeting inbound tourists, all aimed at enhancing daily life.

Trendsetting products with exceptional design, functionality, and stories are brought together, offering a platform for business negotiations with buyers, merchandising developers (MDs), and procurement managers from retailers, department stores, and other key stakeholders.

Data for Previous  
Event  
(Exhibitor/Visitor Numbers)

201 companies  
15,855 visitors

Organizers: RX Japan Ltd.  
Contact:Phone: +81-3-6739-4105  
E-Mail: lifestyle-eng.jp@rxglobal.com



## 22 INTEX Osaka

Date  
09 Sep.  
24 Wed.  
09 Sep.  
26 Fri.

### COSME Week Osaka

The exhibition is composed of two specialised trade shows: the Cosmetics Development Expo, which covers the cutting edge of cosmetics development, and the Int'l Cosmetics Trade Fair, where the latest cosmetics from around the world come together. This comprehensive exhibition brings together everything from ingredients, containers, and packaging to OEM services and finished cosmetic and beauty products, showcasing the industry's leading innovations and products. A wide range of professionals from the beauty industry, including those involved in cosmetics development, manufacturers, importers/exporters, and wholesalers, as well as professionals from beauty salons, esthetic salons, and hair salons, will attend, offering opportunities to explore the latest trends and expand a business.

Data for Previous  
Event  
(Exhibitor/Visitor Numbers)

220 companies  
15,603 visitors

Organizers: RX Japan Ltd.  
Contact: cosme-tokyo.jp@rxglobal.com  
Phone: +81-3-6739-4121



## 23 INTEX Osaka

Date  
10 Oct.  
01 Wed.  
10 Oct.  
03 Fri.

### Manufacturing World Osaka 2025

This is an exhibition featuring IT solutions, DX products, mechanical components, equipment, devices, measurement products, etc. from around the world. Major visitors from the design, development, manufacturing, production engineering, purchasing, and information systems divisions of the manufacturing industry, mainly in the Kansai region, actively engage in business meetings at the show. In 2025, "Smart Maintenance Expo" will be newly added to the show, which will consist of a total of 10 specialised technology shows for each product category. The concurrent conference where visitors can learn about cutting-edge case studies in the manufacturing industry are also a highlight of the show.

Data for Previous  
Event  
(Exhibitor/Visitor Numbers)

1,250 companies  
35,000 visitors

Organizers: RX Japan Ltd.  
Contact: Phone: +81-3-6739-4106  
E-Mail: visitor-eng.mfg.jp@rxglobal.com



## 24 Business Innovation Center Osaka

Date  
10 Oct.  
10 Fri.

### Upcycle Technology Exhibition 2025

The upcycle and recycling event introduces companies that offer plastic, wood and other materials made by reusing waste and residues as industrial materials, and firms that own technologies to produce them.

10:30-16:30

Data for Previous  
Event  
(Exhibitor/Visitor Numbers)

31 Companies  
638 Visitors

Organizer: Secretariat for Manufacturing Exhibition at Business Innovation Center Osaka, Osaka Business Development Agency  
Address: Business Innovation Center Osaka, 1-4-5 Hon-machi, Chuo Ward, Osaka, Osaka Prefecture  
Phone: +81-6-6264-9920 (10:00-12:00/13:00-17:30 on Weekdays Except National Holidays) Fax: +81-6-6264-9899 E-Mail: monozukuri@sansokan.jp



## 25 Business Innovation Center Osaka

Date  
11 Nov.  
12 Wed.

### Spatial Design Exhibition 2025

The event focuses on companies with the capacity to offer total planning and expertise related to production and design for exhibition booths for commercial and public facility construction, as well as for display windows and events. Also participating are materials-sector firms that handle highly decorative building materials with outstanding designs.

10:30-16:30

Data for Previous  
Event  
(Exhibitor/Visitor Numbers)

**48 Companies**  
**455 Visitors**

Organizer: Secretariat for Manufacturing Exhibition at Business Innovation Center Osaka, Osaka Business Development Agency  
Address: Business Innovation Center Osaka, 1-4-5 Hon-machi, Chuo Ward, Osaka, Osaka Prefecture  
Phone: +81-6-6264-9920 (10:00-12:00/13:00-17:30 on Weekdays Except National Holidays) Fax: +81-6-6264-9899 E-Mail: monozukuri@sansokan.jp



## 26 Business Innovation Center Osaka

Date  
11 Nov.  
14 Fri.

### Food Processing Technology Exhibition 2025

Participating in the exhibition are companies with food-related technologies, including for automation and labor-saving, hygiene and quality control, long-term storage and freshness preservation, and upcycling to use food residues.

10:30-16:30

Data for Previous  
Event  
(Exhibitor/Visitor Numbers)

**39 Companies**  
**503 Visitors**

Organizer: Secretariat for Manufacturing Exhibition at Business Innovation Center Osaka, Osaka Business Development Agency  
Address: Business Innovation Center Osaka, 1-4-5 Hon-machi, Chuo Ward, Osaka, Osaka Prefecture  
Phone: +81-6-6264-9920 (10:00-12:00/13:00-17:30 on Weekdays Except National Holidays) Fax: +81-6-6264-9899 E-Mail: monozukuri@sansokan.jp



## 27 Business Innovation Center Osaka

Date  
12 Dec.  
12 Fri.

### Adhesion and Bonding Technologies Exhibition 2025

Highlights of this exhibition include industrial-use adhesives that are instant, heat-resistant and electrically conductive, and two-component adhesives. Also featured are consumer products such as removable adhesives, as well as technologies and materials for strong, weak and other adhesives.

10:30-16:30

Data for Previous  
Event  
(Exhibitor/Visitor Numbers)

**54 Companies**  
**1,067 Visitors**

Organizer: Secretariat for Manufacturing Exhibition at Business Innovation Center Osaka, Osaka Business Development Agency  
Address: Business Innovation Center Osaka, 1-4-5 Hon-machi, Chuo Ward, Osaka, Osaka Prefecture  
Phone: +81-6-6264-9920 (10:00-12:00/13:00-17:30 on Weekdays Except National Holidays) Fax: +81-6-6264-9899 E-Mail: monozukuri@sansokan.jp



## 28 INTEX Osaka

Date  
**12** Dec.  
**17** Wed.  
**12** Dec.  
**19** Fri.  
 10:00-17:00

### DX EXPO 2025 OSAKA Winter / Business Innovation Japan 2025 OSAKA Winter

DX EXPO is one of Japan's largest comprehensive exhibitions for digital transformation (DX), showcasing solutions aimed at improving work efficiency, promoting work style reforms and strengthening management foundations.

The event will be held alongside Business Innovation Japan, a comprehensive exhibition that presents a wide range of solutions to address corporate management challenges in the VUCA (volatility, uncertainty, complexity and ambiguity) era.



Data for Previous Event  
 (Exhibitor/Visitor Numbers)

Tokyo Big Sight, October 2024  
 410 companies  
 About 25,000 visitors

ATC Hall, December 2023  
 115 companies  
 About 5,000 visitors

Organizer: DX EXPO 2025 OSAKA Winter /  
 Business Innovation Japan 2025 OSAKA Winter  
 Executive Committee

Address: PMO Tamachi IV 7th  
 Floor 5-29-19 Shiba, Minato  
 Ward, Tokyo

Contact: Exhibition Business Department  
 Everidge Co., Ltd.  
 Phone: + 81-3-5715-6012 E-Mail: dx-expo@bizcrew.jp

## 29 Business Innovation Center Osaka

Date 2026  
**01** Jan.  
**23** Fri.  
 10:30-16:30

### Design/Decoration Technology Exhibition 2026

This exhibition focuses on vapor deposition, thermal transfer and other surface-processing technologies used to enhance product design, alongside techniques such as silk screen printing for plastic and metal surfaces, and curved surface printing.



Data for Previous Event  
 (Exhibitor/Visitor Numbers)

50 Companies  
 946 Visitors

Organizer: Secretariat for Manufacturing Exhibition at Business Innovation Center Osaka, Osaka Business Development Agency  
 Address: Business Innovation Center Osaka, 1-4-5 Hon-machi, Chuo Ward, Osaka, Osaka Prefecture  
 Phone: +81-6-6264-9920 (10:00-12:00/13:00-17:30 on Weekdays Except National Holidays) Fax: +81-6-6264-9899 E-Mail: monozukuri@sansokan.jp



## 30 Business Innovation Center Osaka

Date 2026  
**02** Feb.  
**19** Thu.  
**02** Feb.  
**20** Fri.  
 February 19 (Day 1):  
 13:30-17:00  
 February 20 (Day 2):  
 10:00-16:00

### Highly-functional Plastic & Rubber Exhibition 2026

The exhibition brings together companies with processing technologies for a range of plastic materials, such as bioplastics, and for rubber materials, as well as firms that offer related engineering services.



Data for Previous Event  
 (Exhibitor/Visitor Numbers)

60 Companies  
 1,366 Visitors (Total Attendance)

Organizer: Secretariat for Manufacturing Exhibition at Business Innovation Center Osaka, Osaka Business Development Agency  
 Address: Business Innovation Center Osaka, 1-4-5 Hon-machi, Chuo Ward, Osaka, Osaka Prefecture  
 Phone: +81-6-6264-9920 (10:00-12:00/13:00-17:30 on Weekdays Except National Holidays) Fax: +81-6-6264-9899 E-Mail: monozukuri@sansokan.jp



## Osaka One-Stop Business Service Desk

The Osaka prefectural government, in partnership with the Osaka city government and various support organizations, has set up the Osaka One-Stop Business Service Desk to address business inquiries from overseas promptly and appropriately. The aim is to create opportunities for business exchanges, with a primary focus on companies in Osaka.

The service desk welcomes inquiries from foreign public/private organizations considering hosting business events in, or sending business delegations to, the Osaka area on the occasion of Expo 2025 Osaka, Kansai, Japan.

We encourage foreign public/private agencies to contact us if planning to hold business events or send delegations to Osaka, Kansai on the occasion of EXPO 2025.

### 【Contact Information】

Japan External Trade Organization (JETRO) Osaka Office Osaka Kokusai Building 29th Floor  
2-3-13 Azuchi-machi, Chuo Ward, Osaka, Osaka Prefecture  
Phone: +81-6-4705-8607

(Office hours: 9:00-17:00 on weekdays, except New Year holidays)

Email: [Osaka\\_Business\\_Onestop@jetro.go.jp](mailto:Osaka_Business_Onestop@jetro.go.jp)

【URL】 [https://www.jetro.go.jp/en/osaka\\_bsd/](https://www.jetro.go.jp/en/osaka_bsd/)



## Osaka Business and Investment Center (O-BIC)

The Osaka Business and Investment Center (O-BIC) was established in April 2001 through a partnership between the Osaka prefectural government, the Osaka city government, and the Osaka Chamber of Commerce and Industry.

O-BIC serves as a one-stop service center, offering comprehensive support, including essential information and expert advice, to foreign companies, diplomatic missions and economic organizations looking to expand into Osaka. It also assists foreign companies already operating in Japan that are planning to set up a second business base in Osaka.

### 【Contact Information】

International Division, Osaka Chamber of Commerce and Industry  
2-8 Honmachibashi, Chuo Ward, Osaka, Osaka Prefecture  
Phone: +81-6-6944-6298

Fax: +81-6-6944-6293

(Office hours: 9:00-17:15 on weekdays, except Year-End/New year's Holidays)

【URL】 <https://o-bic.net/>



## Concierge Services for Arranging Tours of Small and Medium-Sized Manufacturing Companies

"Osaka Machiju Monozukuri Pavilion" is a portal website offering a full range of information on showrooms across Osaka Prefecture, as well as local factories that welcome visitors for tours. This platform helps showcase the technological capabilities of small and medium-sized manufacturers in the prefecture and the attractions of their products. The service primarily caters to the growing number of visitors expected for Expo 2025.

Visitors to the portal can easily access information on factory tours and apply to visit specific factories that match their interests.

Additionally, dedicated concierges are available to provide tailored support, ensuring that both parties' needs are met efficiently.

### 【Contact Information】

MOBIO Business Department  
Osaka Business Development Agency  
Creation Core Higashiosaka North Tower 1st Floor  
1-4-17 Aramoto-kita, Higashiosaka, Osaka Prefecture  
Email: [factory@m-osaka.com](mailto:factory@m-osaka.com)

【URL】 <https://shisaly-pavilion.com/>



## The MOZUYAN MALL Business Matchmaking System for Expo 2025

The MOZUYAN MALL Business Matchmaking System for Expo 2025 is a procurement support platform established by the Osaka prefectural government. The site provides information on goods and services offered by small and medium-sized enterprises in Osaka Prefecture, facilitating business matches between companies. It also operates a call center to assist in finding suppliers that meet your needs. Please contact the call center when looking for business partners in Osaka.

### 【Contact Information】

MOZUYAN MALL call center

Phone: +81-6-7712-2806

(Office hours: 9:00-17:30 on weekdays, except Year-End/New year's Holidays)

Email: [mozuyanmall\\_touroku@mail.bensys.jp](mailto:mozuyanmall_touroku@mail.bensys.jp)

Support available in Japanese, English, French

【URL】 <https://www.expo-mozuyanmall.jp/en/>

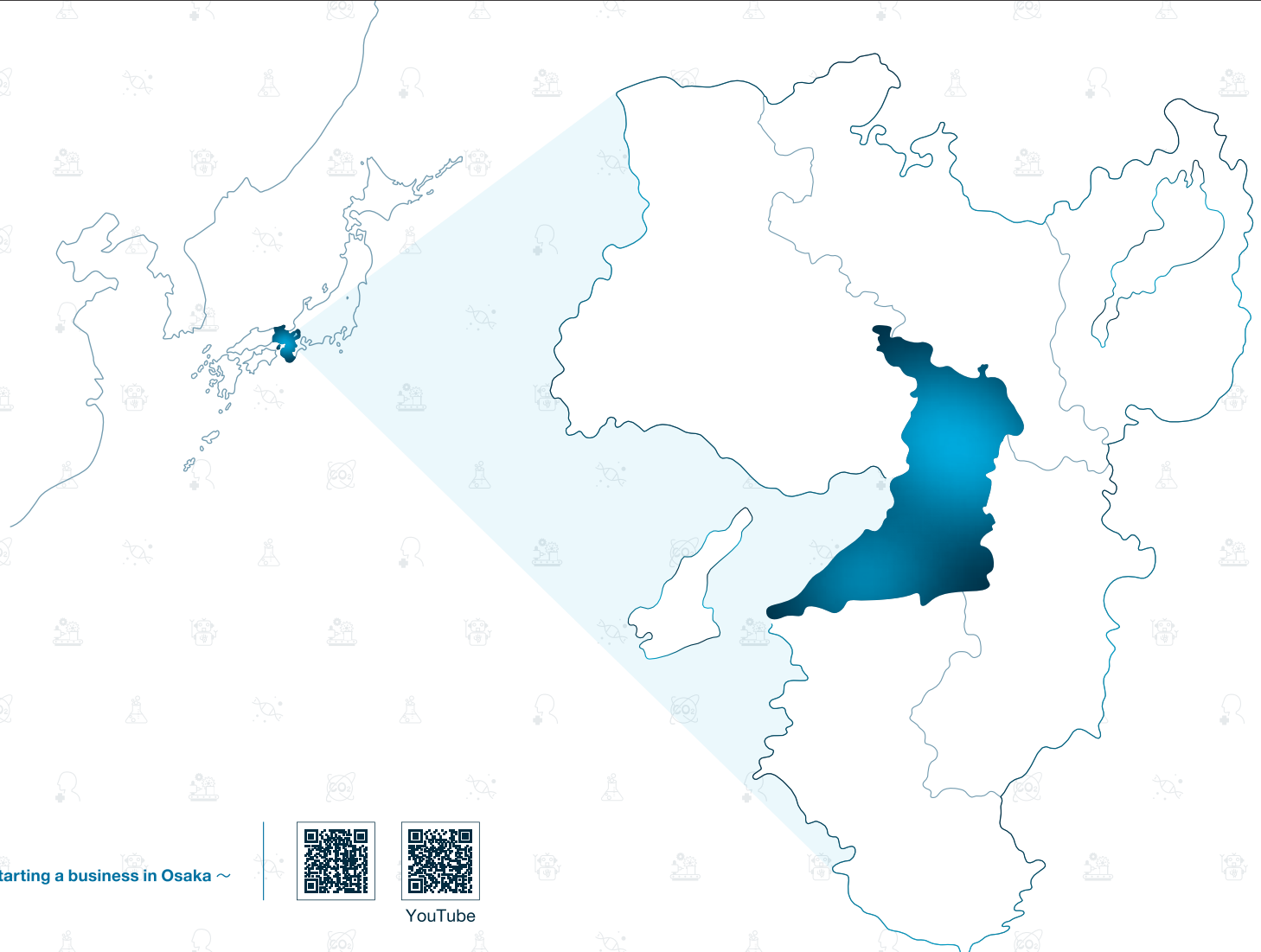


\* Registration/usage is free.

\* All times are indicated in Japan Standard Time.

Expo 2025  
Official character  
MYAKU-MYAKU





## OPEN!!OSAKA

~ Information about starting a business in Osaka ~



YouTube

## CONTACT

International Business and Start-up Support Division, Growth Industry Promotion Office,  
Department of Commerce, Industry and Labor, Osaka Prefecture

Tel : +81-6-6210-9502 / Fax : +81-6-6210-9296 E-mail : [global@gbox.pref.osaka.lg.jp](mailto:global@gbox.pref.osaka.lg.jp)

Address : 25th floor, Osaka Prefecture Sakishima Building (Sakishima Cosmo Tower),  
1-14-16 Nankokita, Suminoe Ward, Osaka, Osaka Prefecture



Expo 2025  
Official character  
MYAKU-MYAKU

