

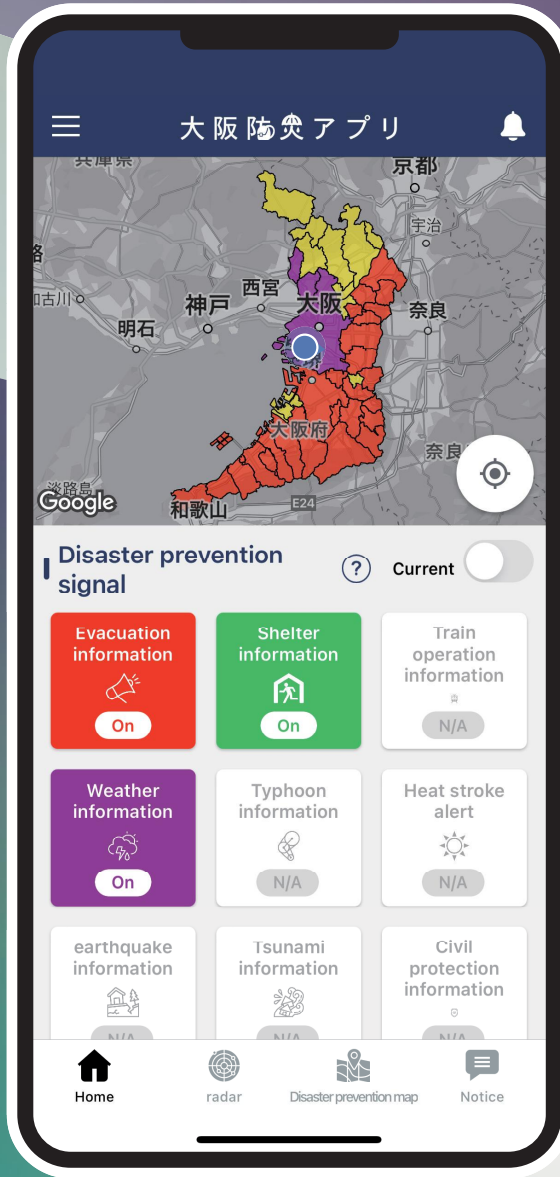
Use the app anywhere in Osaka Prefecture

ぼうさい
大阪防災アプリ

Osaka Disaster Prevention app

Receive disaster prevention information
in Osaka Prefecture

Disaster prevention app
you can use on a daily basis



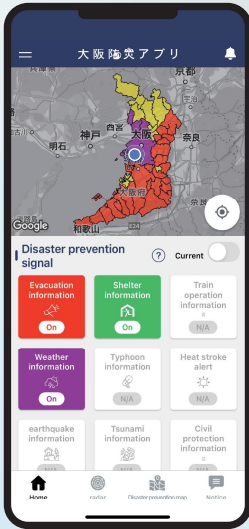
Osaka

Disaster Prevention app

ぼ う さ い

Try it ! 大阪防災アプリ

Osaka Disaster Prevention app

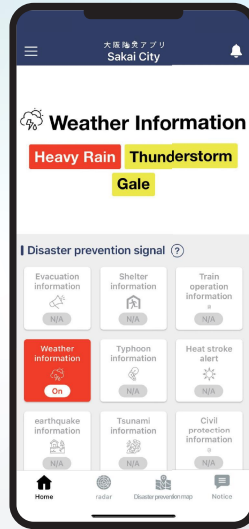


It's okay even if you don't know the area

Location Information Service

Anywhere in Osaka Prefecture, you can access real-time disaster prevention information based on your current location using GPS services.

※Please ensure the app's location permission is set to "Always Allow."



Receive more familiar information

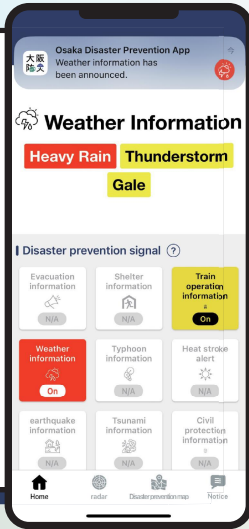
Municipality selection

Information can be provided not only for the entire Osaka Prefecture but also for each municipality within it. By selecting the municipality, you can access disaster prevention materials and receive notifications specific to that area.

Choose the information you want

Push Notification

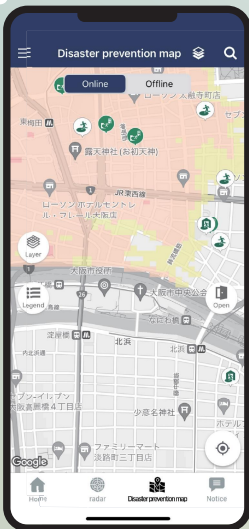
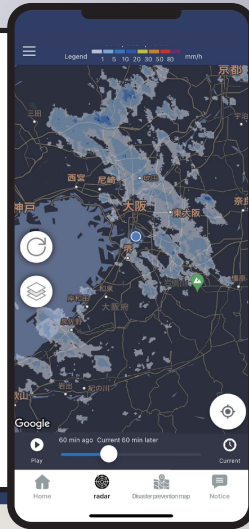
The app offers comprehensive disaster prevention information, including weather advisories, warnings, earthquakes, tsunamis, and typhoons. Additionally, it provides essential guidance on preventing heatstroke, identifying linear precipitation bands, and accessing evacuation instructions from local authorities. Users can also receive notifications from their respective local governments.



Use the app on a daily basis

Rain Radar

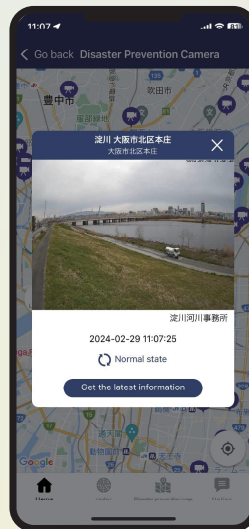
You can also check daily rain cloud conditions, linear precipitation bands and typhoon forecast circles. You can continuously display and view future precipitation intensity distribution predictions from 60 minutes in advance to 15 hours in advance.



Prepare for Emergencies

Hazard Map

You can check the risks of landslides, storm surges, tsunamis, and floods, as well as the location of evacuation centers in Osaka Prefecture on the hazard map. Download offline maps for each municipality in case communication is cut off during a disaster



Check the current situation with images

Disaster Surveillance Camera

By clicking a camera icon on the map, users can access images captured by approximately 200 river cameras and three wide-area cameras in Osaka Prefecture. Additionally, the app allows you to check the water levels of nearby rivers, rainfall situations, and more.

※Languages available: English, Chinese, Korean, and easy Japanese

Contact information

Disaster Control Division,
Crisis Management Office,
Osaka Prefectural Government
TEL : 06-6944-6183



Osaka Disaster Prevention app

