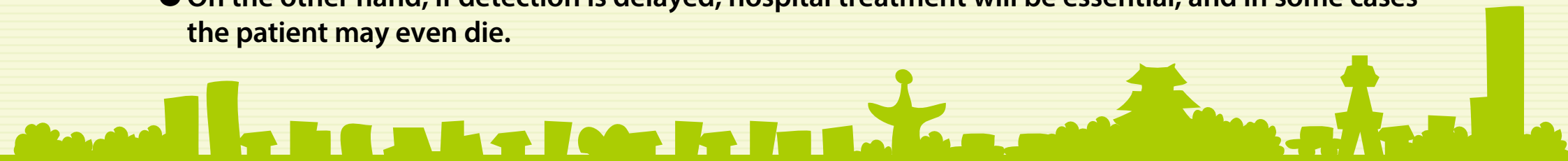


What is tuberculosis!?

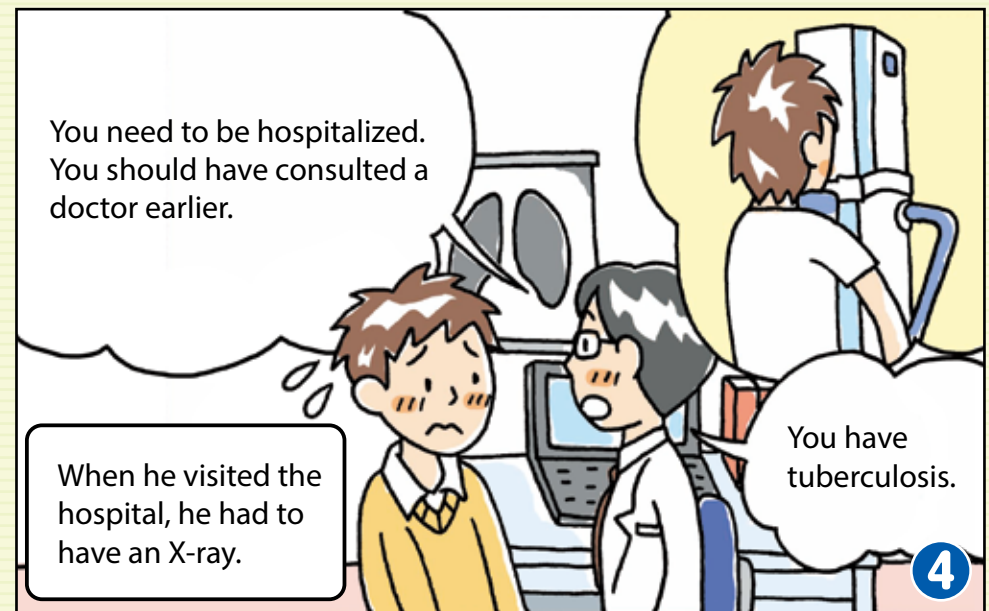
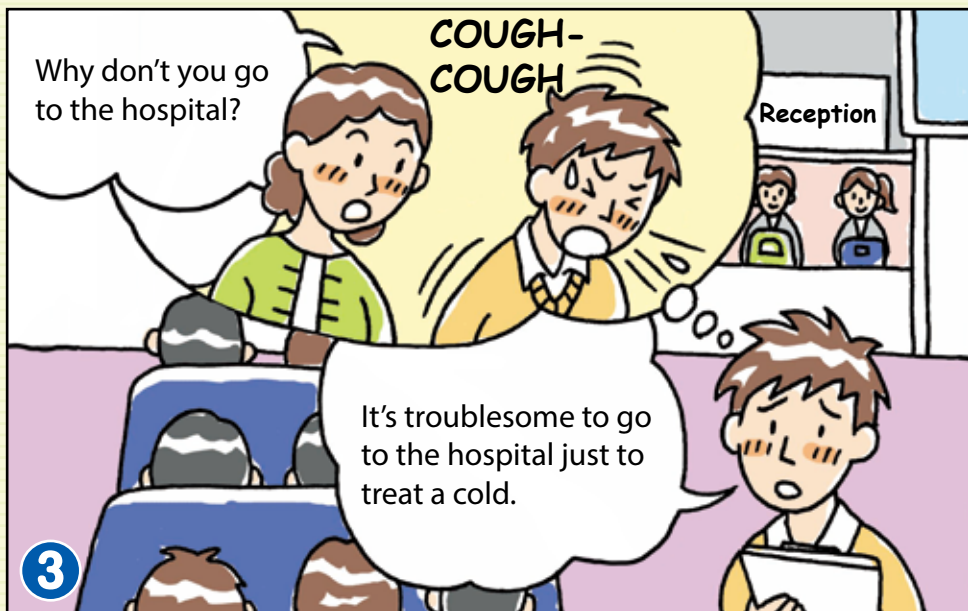
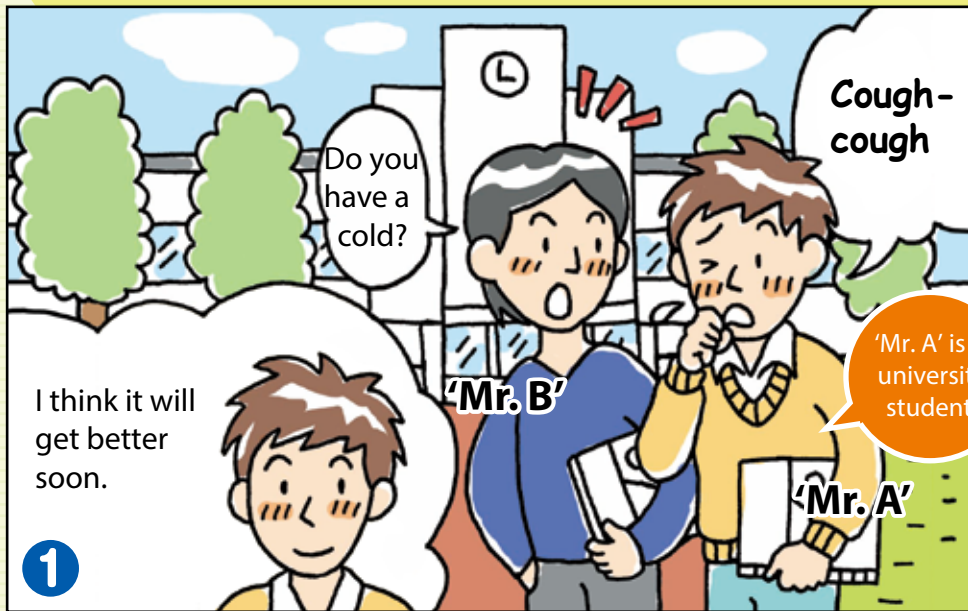
Tuberculosis is not a disease that only existed in the past.

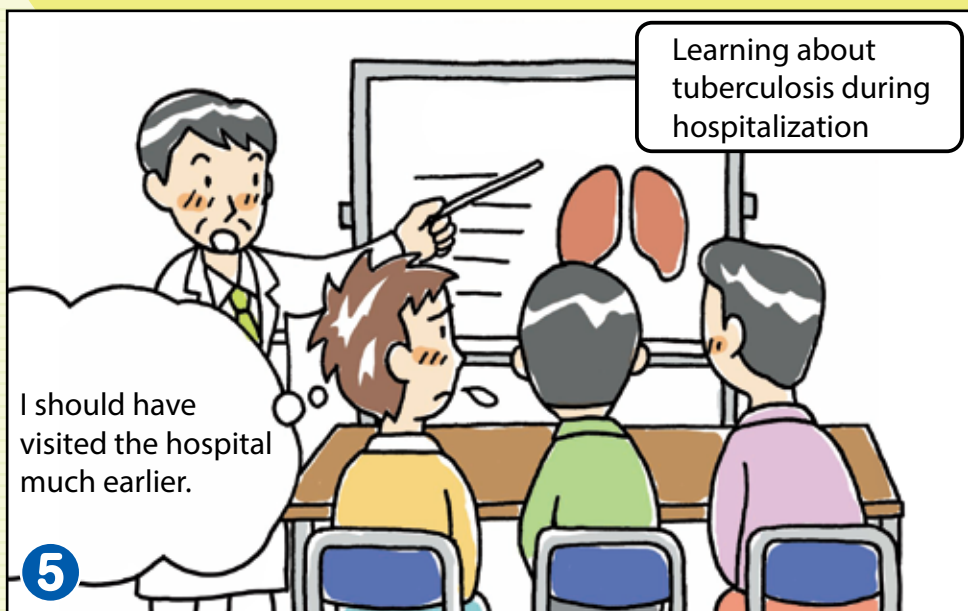
Detection of tuberculosis is likely to be late!

- There are many patients who start receiving treatment every year.
- Today, tuberculosis can be cured by taking medicine. If you have a sputum examination very early in the course of infection when the bacterial pathogen can't be detected yet, just outpatient treatment can cure the disease.
- On the other hand, if detection is delayed, hospital treatment will be essential, and in some cases the patient may even die.

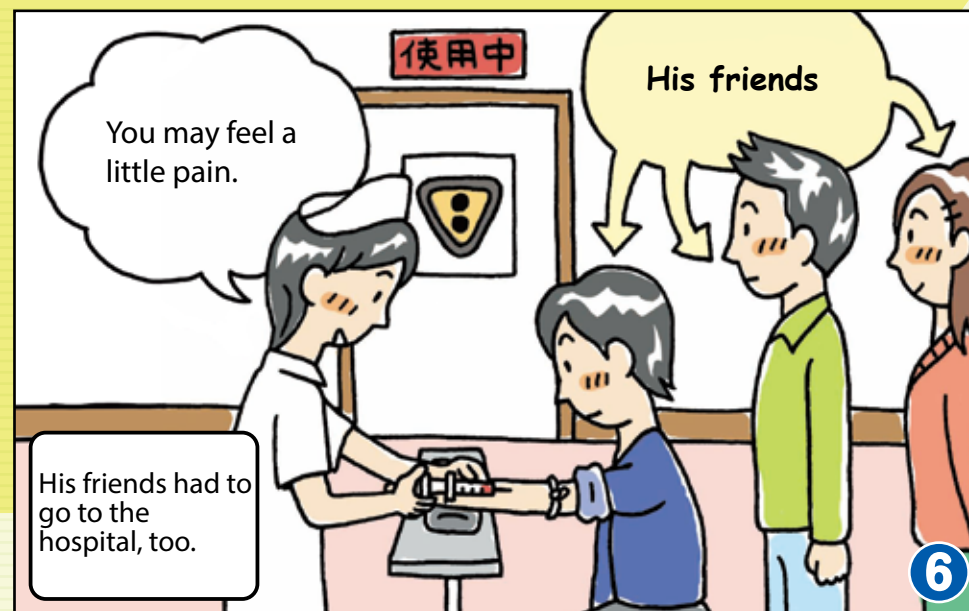


For those who are young

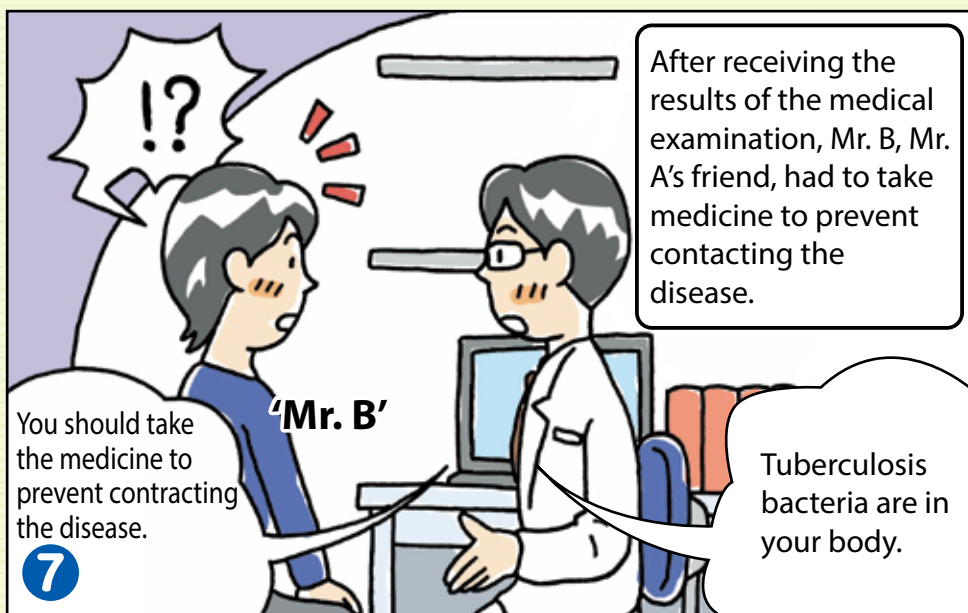




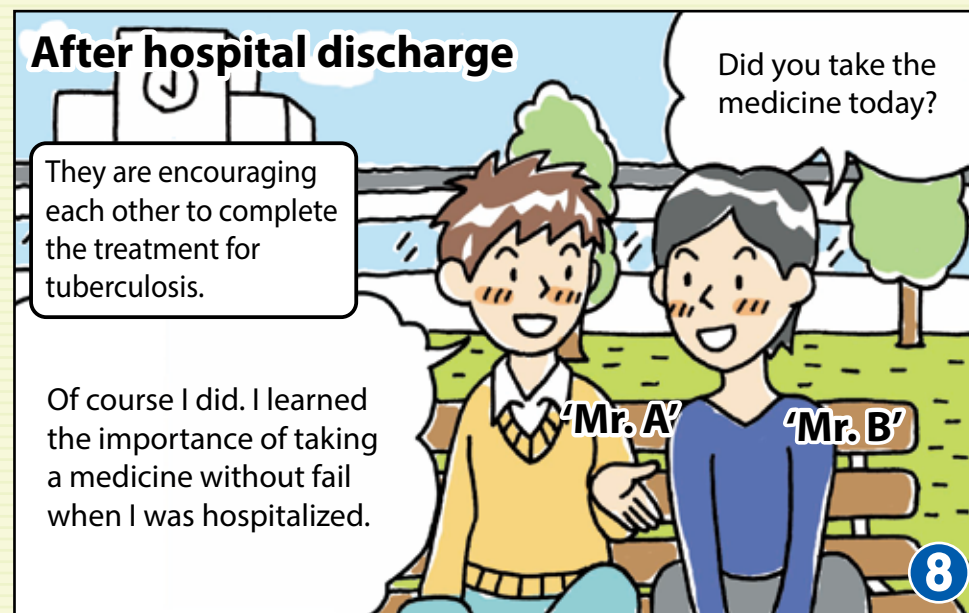
5



6

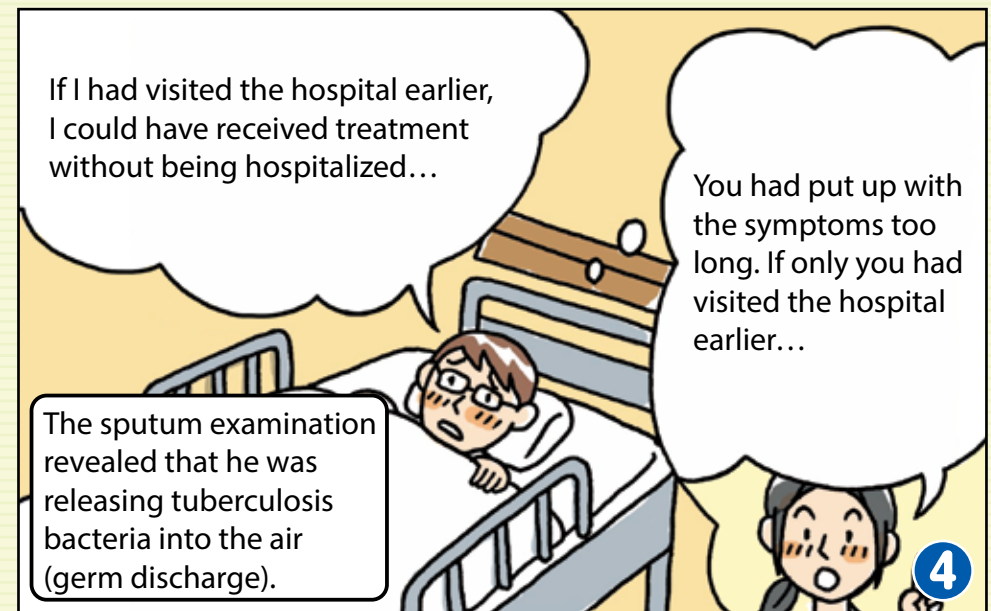
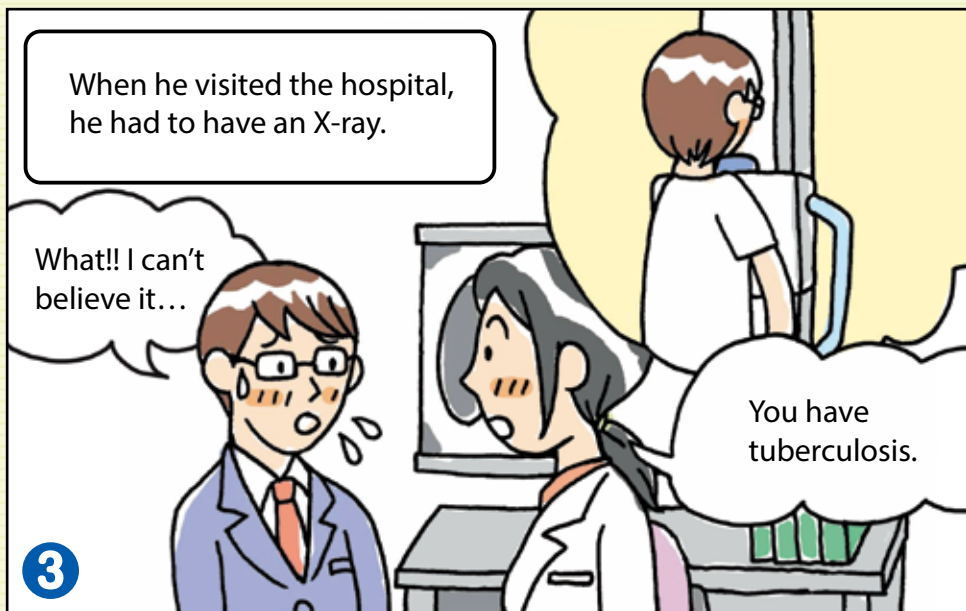
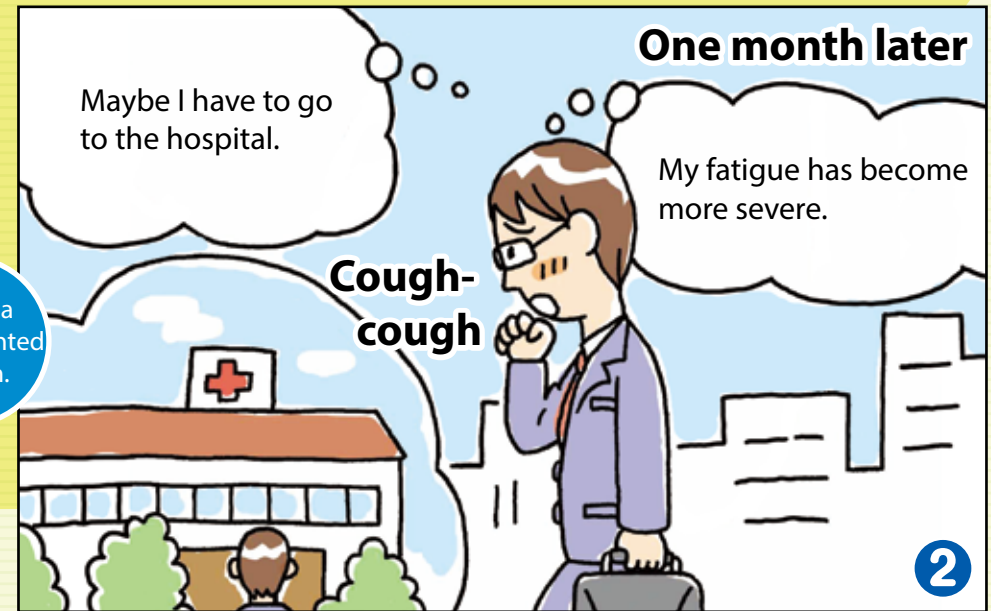
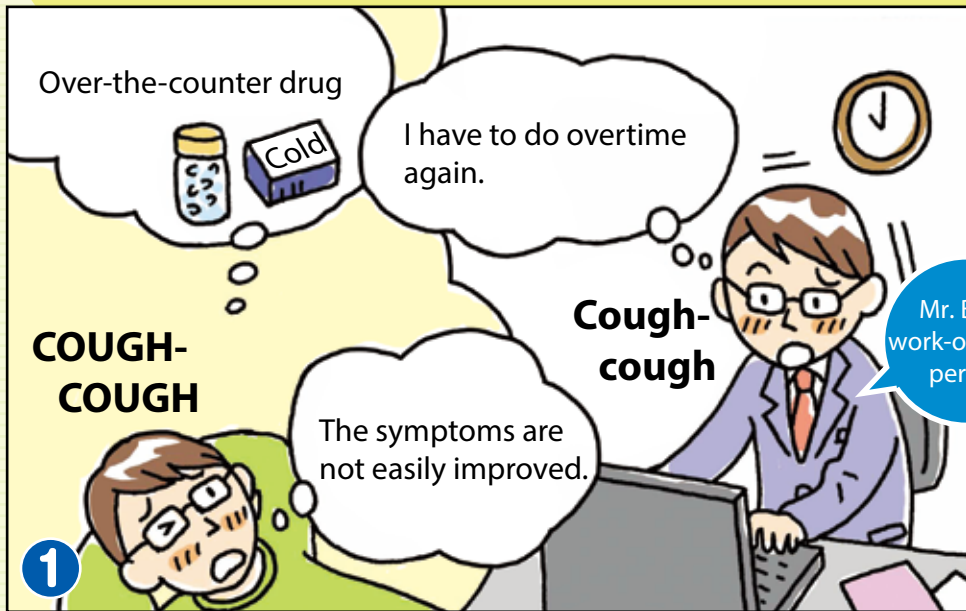


7

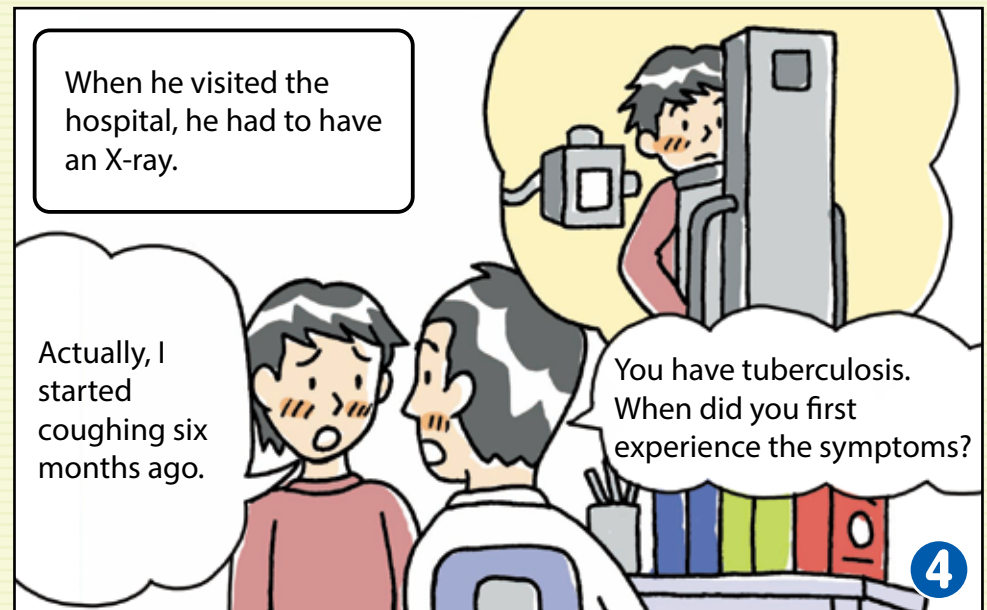
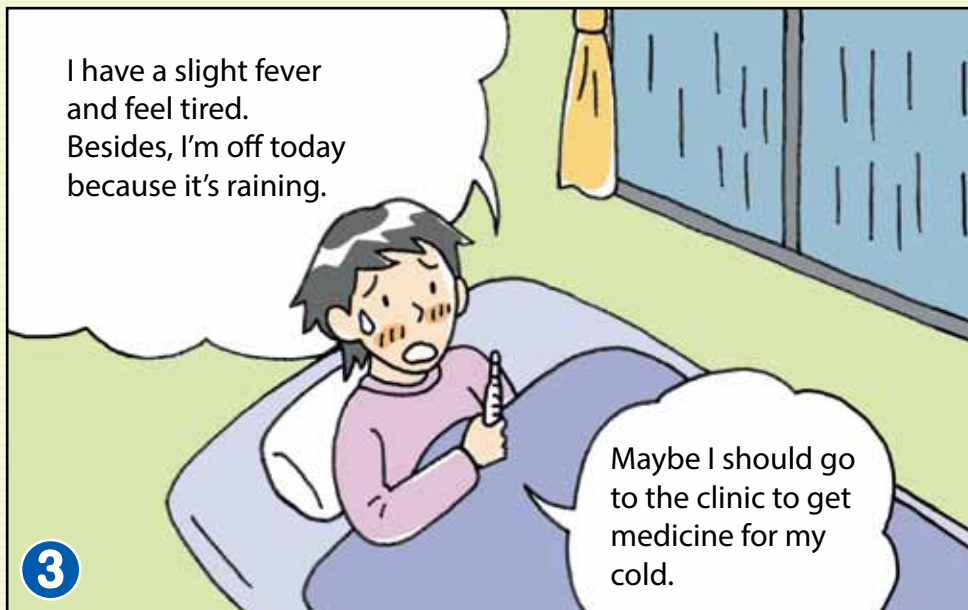
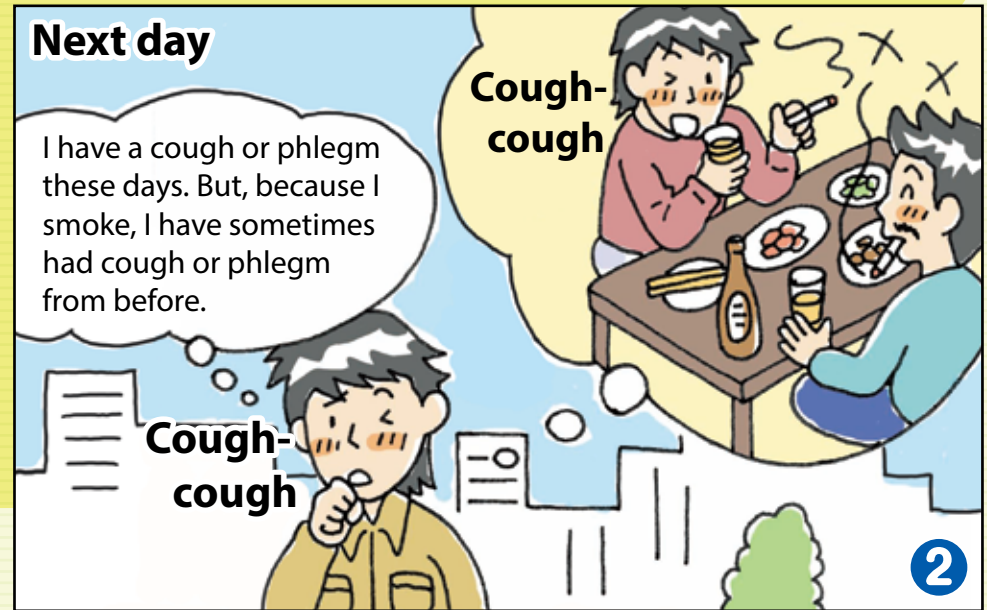
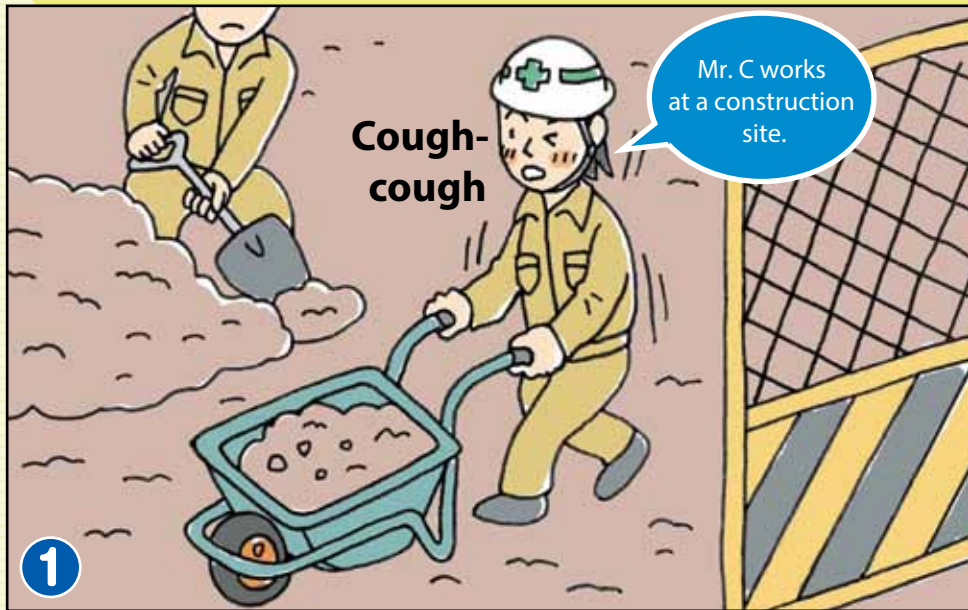


8

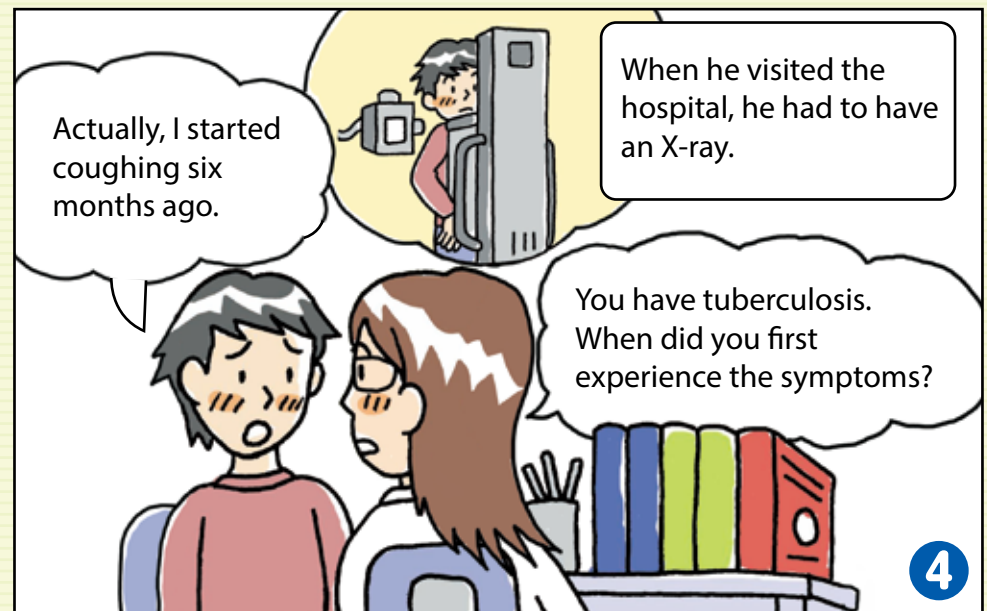
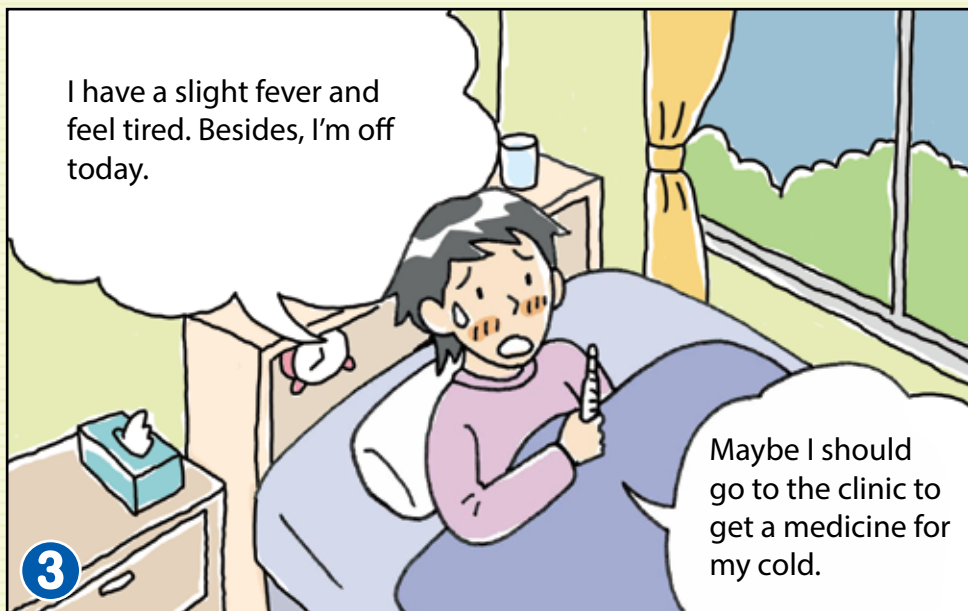
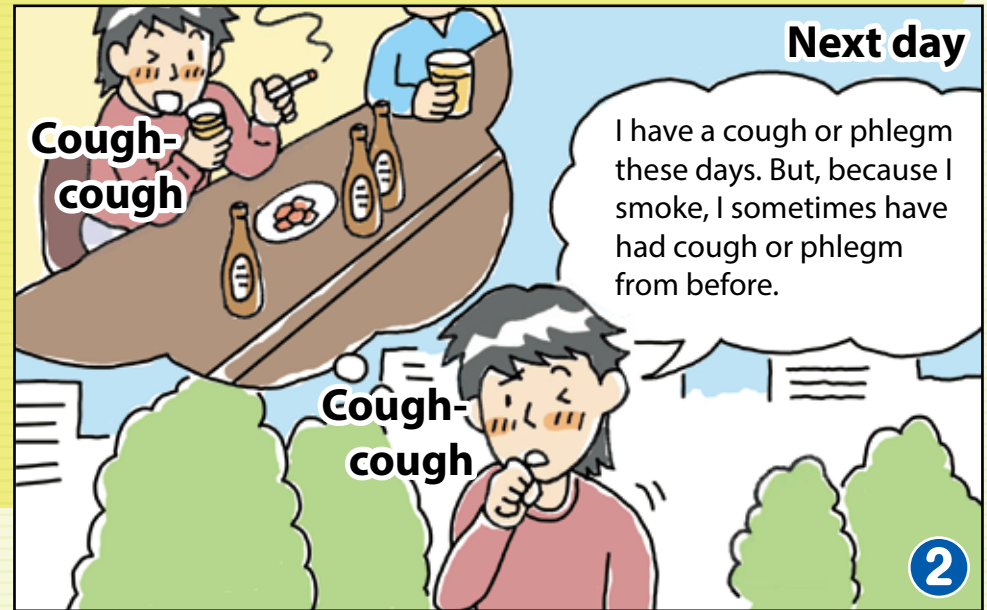
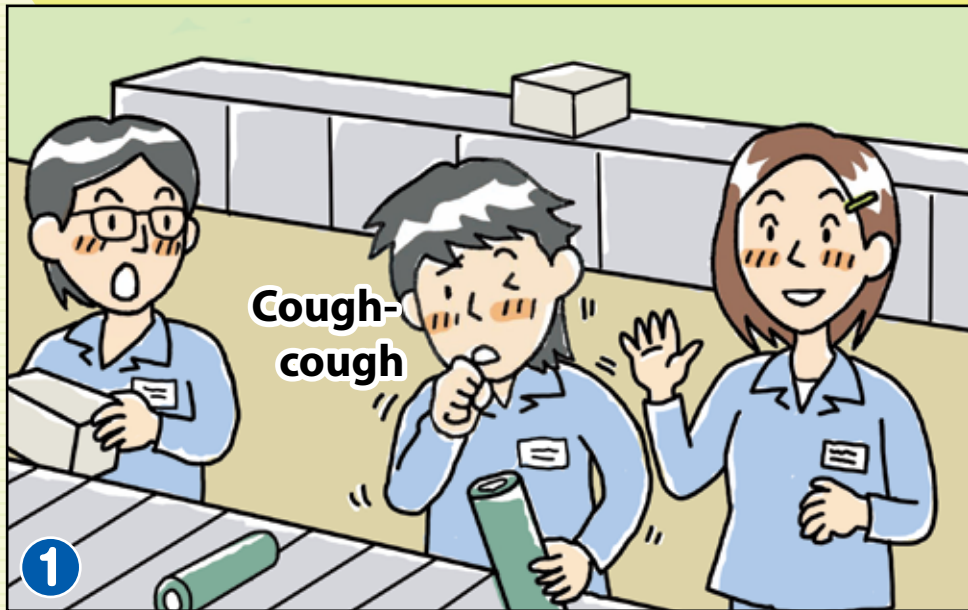
For those who are busy working



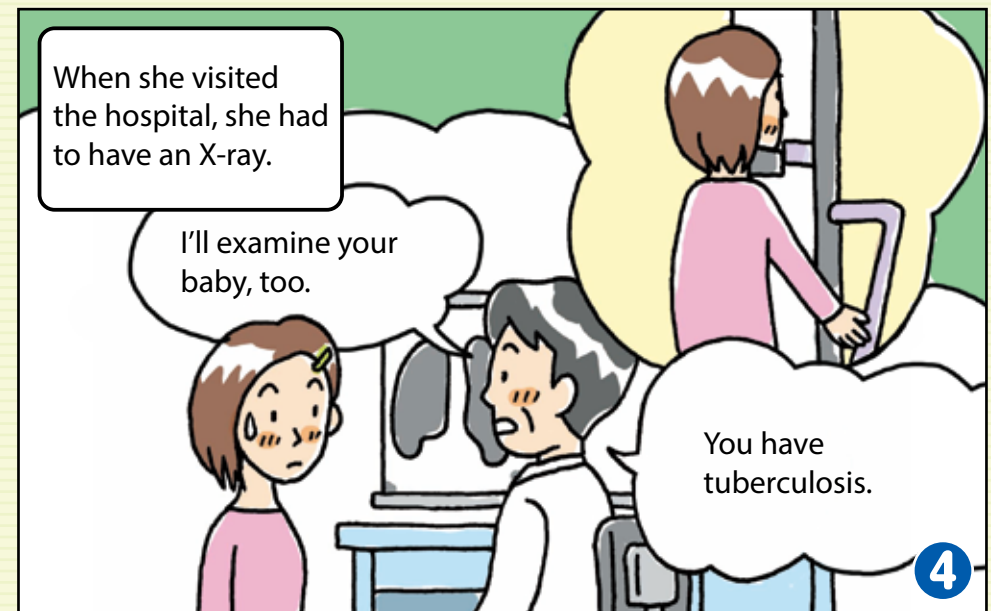
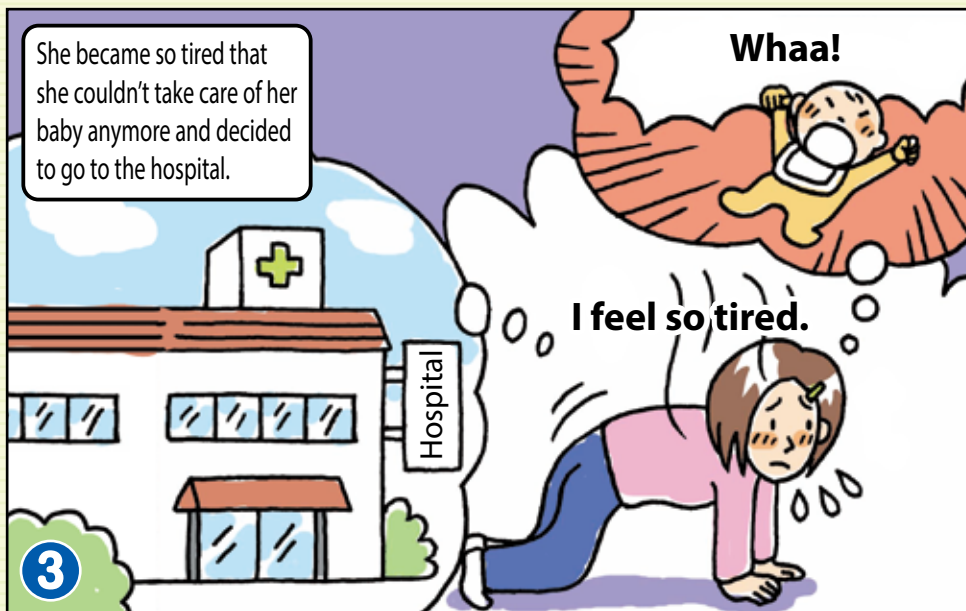
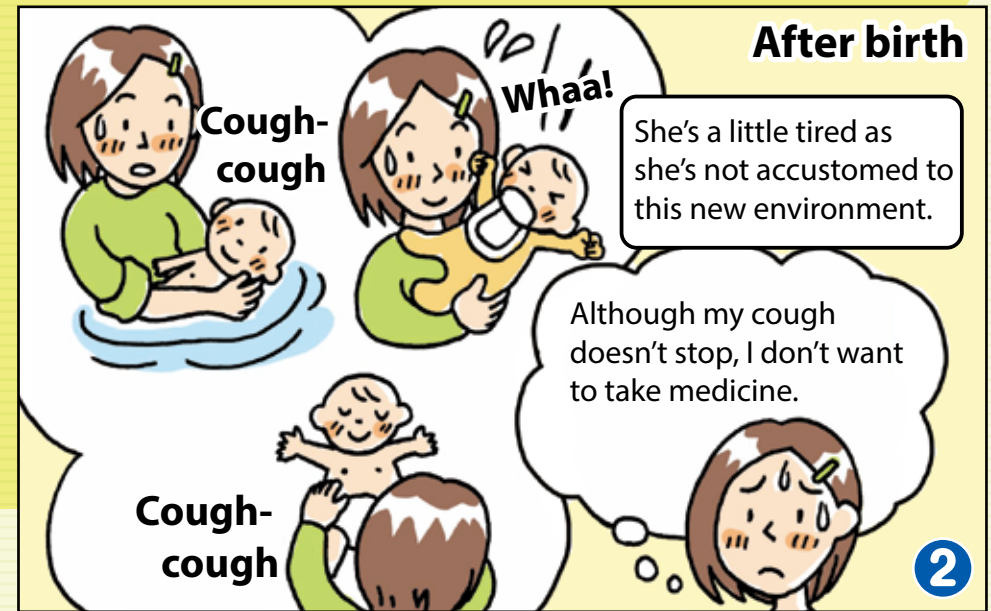
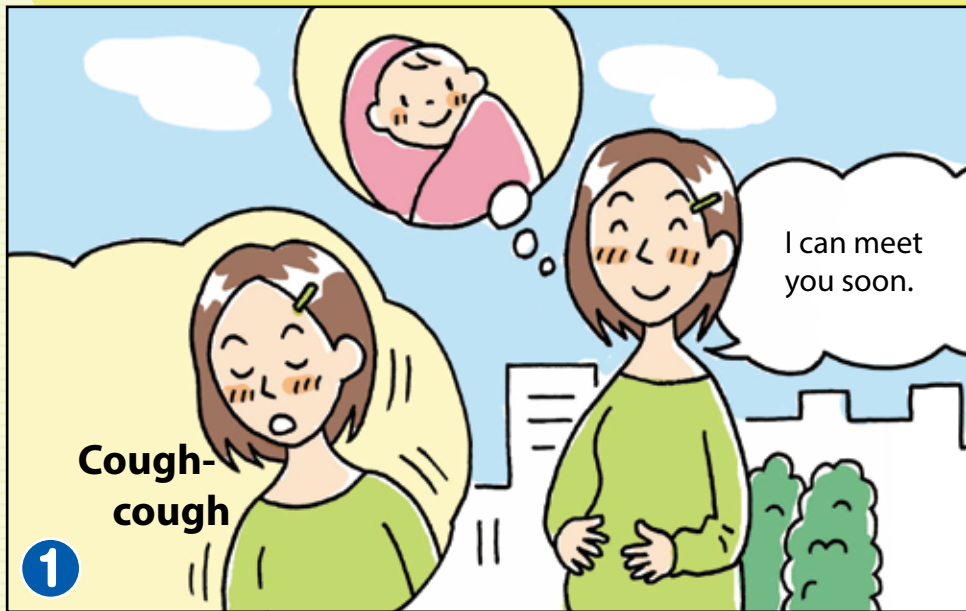
For those who are always busy working



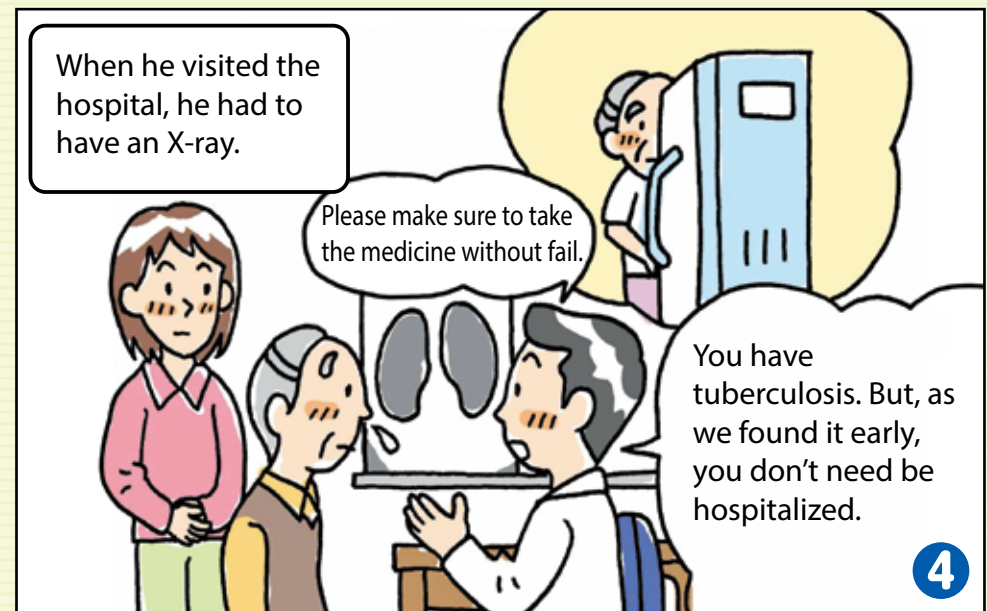
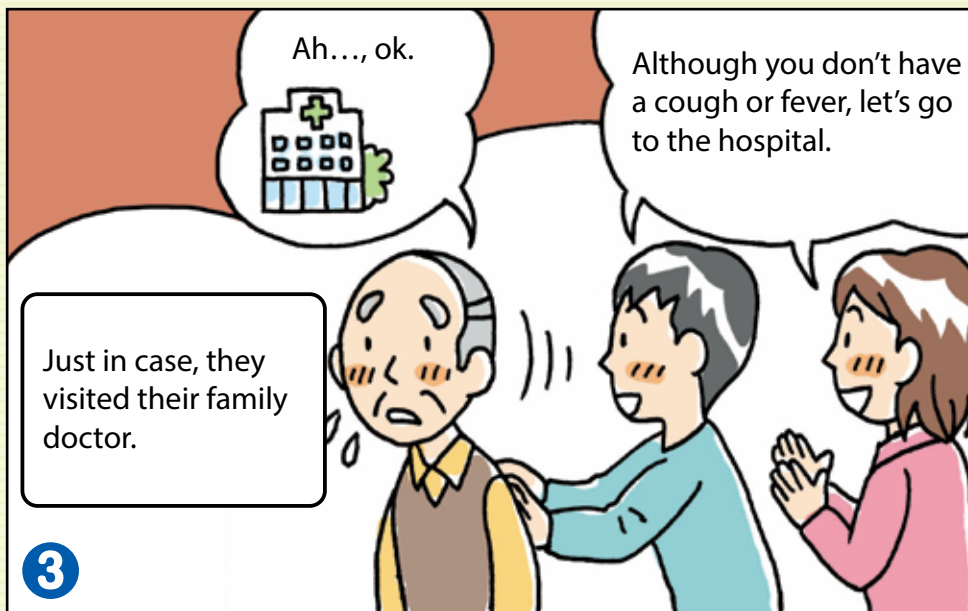
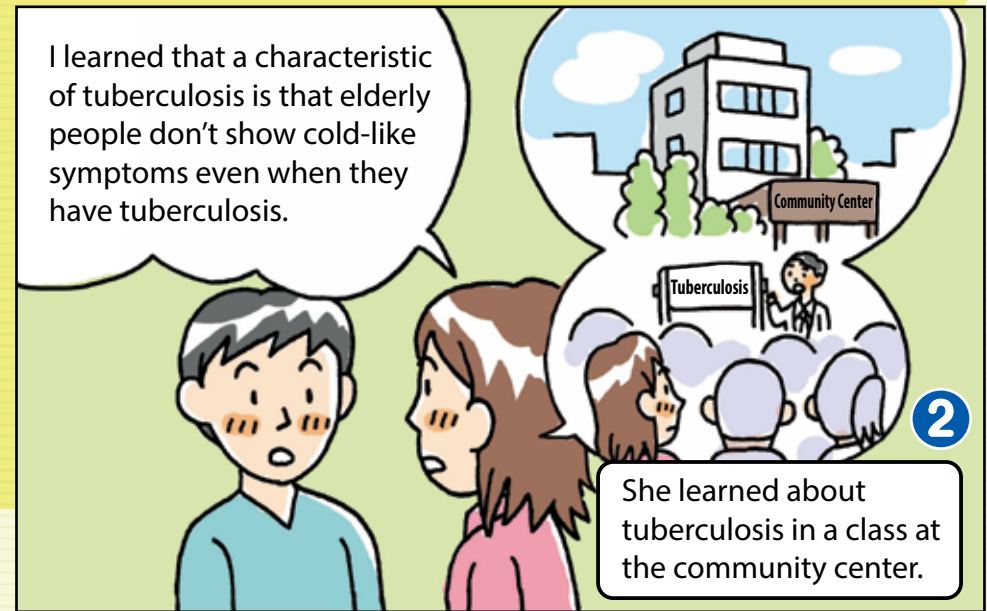
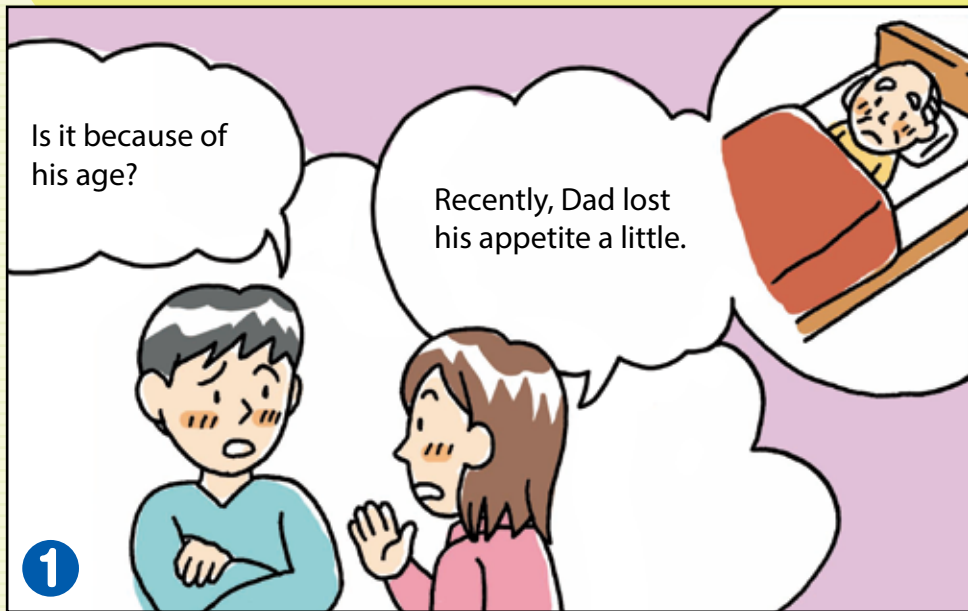
For those who are always busy working



For those who are raising children



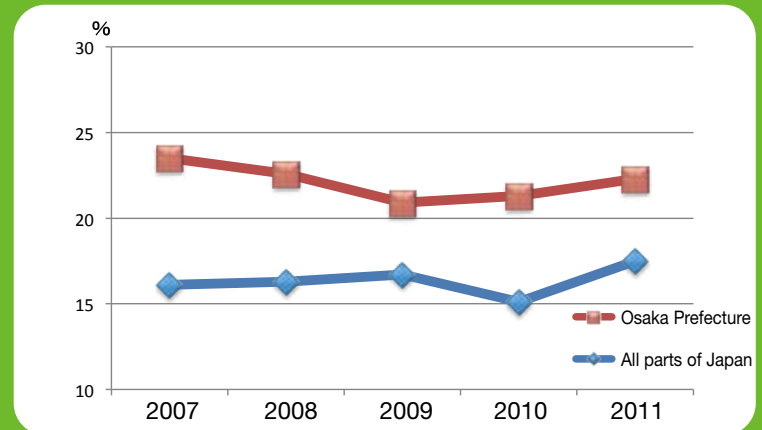
For those who live with an elderly person



Don't assume it's just a cold.

People in Osaka tend to delay going to the hospital, compared with those in other parts of Japan. When cold-like symptoms continue for more than two weeks or such symptoms recur, please visit the hospital as soon as possible!

Ratio of people who are late visiting the hospital.



Coughing, sputum,
no appetite, weight loss,
fever, chest pain, heavy feeling in the chest,
feeling dull

**Do you
have these
symptoms?
You should go to the
hospital earlier rather
than later.**

