

Notice to Osaka Residents

—Regarding the Novel Coronavirus Infection—

Medical Administration Division, Osaka Prefectural Government

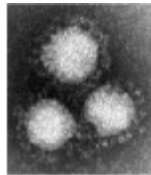
Some cases of the Novel coronavirus have occurred in Osaka Prefecture. We ask that you stay calm and act in accordance with the accurate information issued by the Osaka Prefectural Government and the Ministry of Health, Labour and Welfare.

What is the novel coronavirus infection?

- Similar to influenza and the common cold, infection can occur by contact or droplet transmission.
- People infected with the virus show respiratory symptoms such as fever and coughing.

< Coronavirus >

- Widely causes infection among humans and animals
- 4 other types of coronaviruses that commonly infect humans cause cold-like symptoms.



Coronavirus

• Droplet Infection

Infection transmitted by airborne droplets of saliva or sputum coming from a cough or sneeze of an infected person.

• Contagious infection

Infection transmitted by touching your mouth or nose with your hands that have touched virus-contaminated door knobs, train hand straps, etc.



©2014 Mozuyan,
Mascot Character of
Osaka Prefecture

Preventive measures

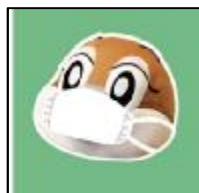
Thorough implementation of general preventive measures are effective.

● Hand-washing



Wash your hands regularly using hand soap. Using an alcohol-based hand rub is also effective.

● Cough etiquette



When coughing or sneezing, prevent the spread of saliva from your mouth and nose using a disposable face mask, facial tissue, handkerchief, or your sleeve.

【To business operators】

-Pay close attention to the health management of your employees. Take measures such as providing alcohol-based hand rubs.

-It is recommended that service industry workers and those in facilities open to the general public wear disposable face masks.

Other than hand-washing and cough etiquette:

- Improve your body's defense against infection on a daily basis.
- Senior citizens, those with underlying medical conditions, pregnant women and those in a poor state of health should refrain from going to crowded areas.

If you suspect that you may be infected with novel coronavirus, please consult with:
Osaka Information Service for Foreign Residents, Osaka Foundation of International Exchange (OFIX) :Tel 06-6941-2297

-Monday and Friday: 9am - 8pm (except national holidays)

-Tuesday/ Wednesday/Thursday: 9am - 5:30pm (except national holidays)

-2nd and 4th Sundays: 1pm - 5pm

Please visit the website below for further details:

<http://www.pref.osaka.lg.jp.e.agb.hp.transer.com/iryo/osakakansensho/corona.html> (English)



大阪府