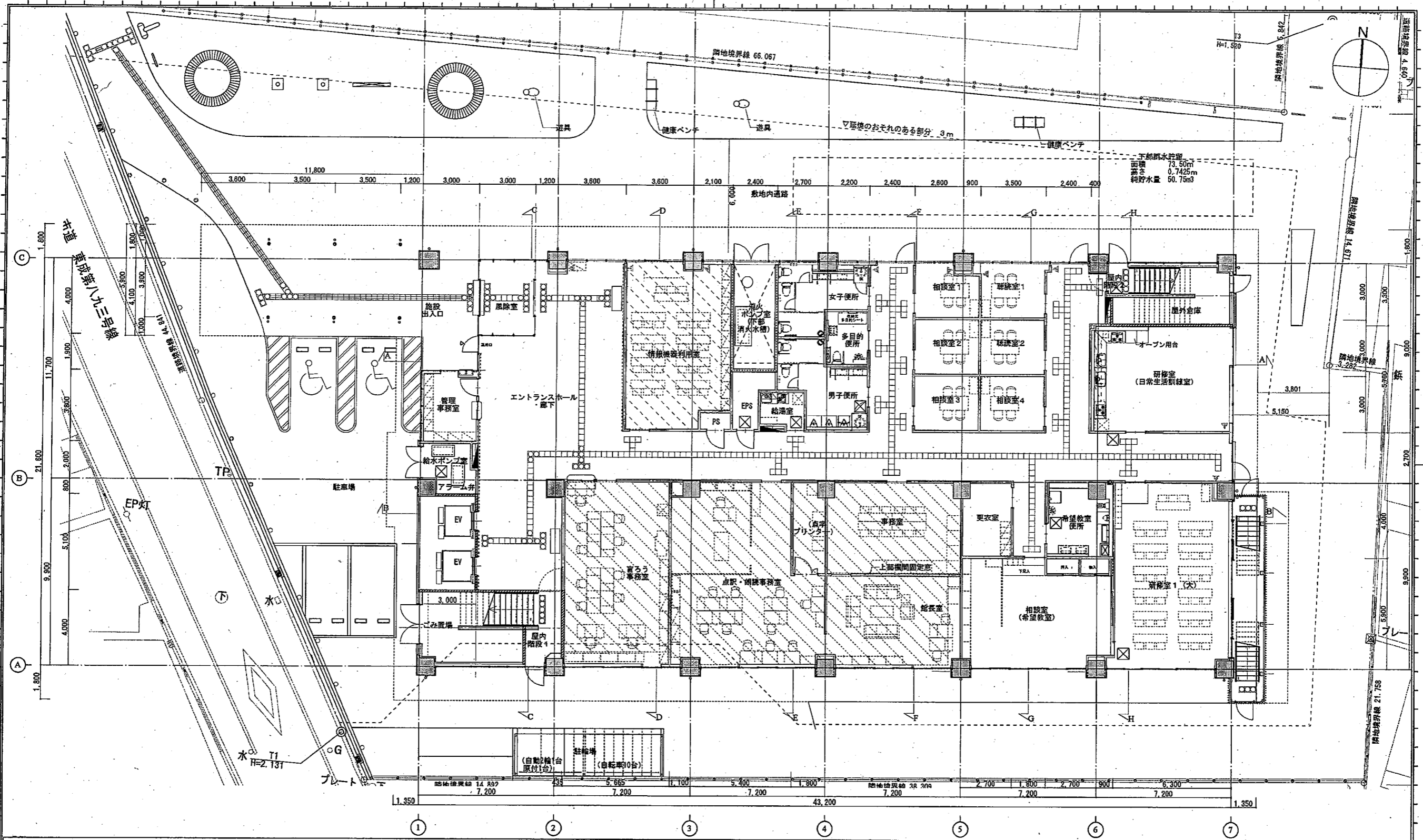
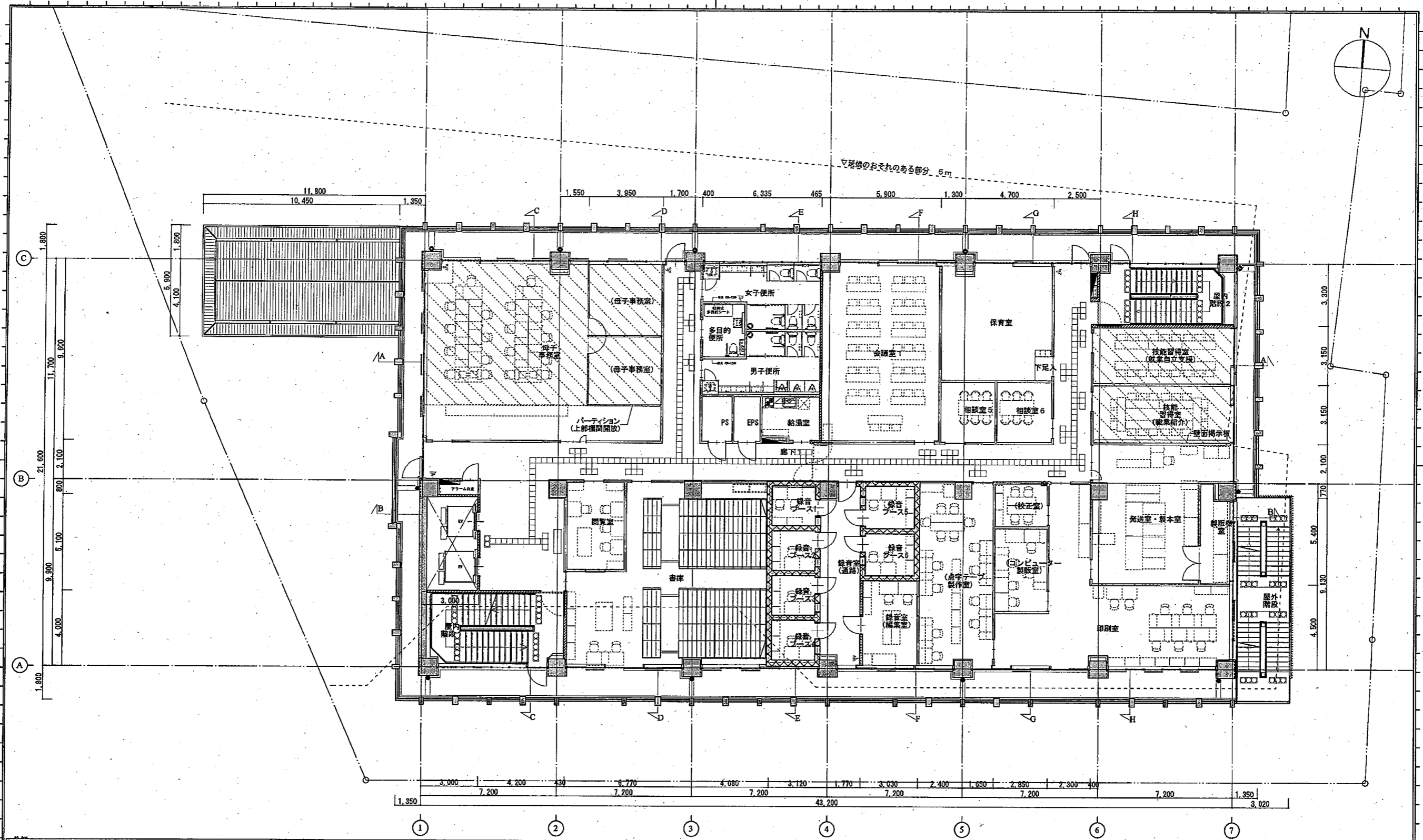


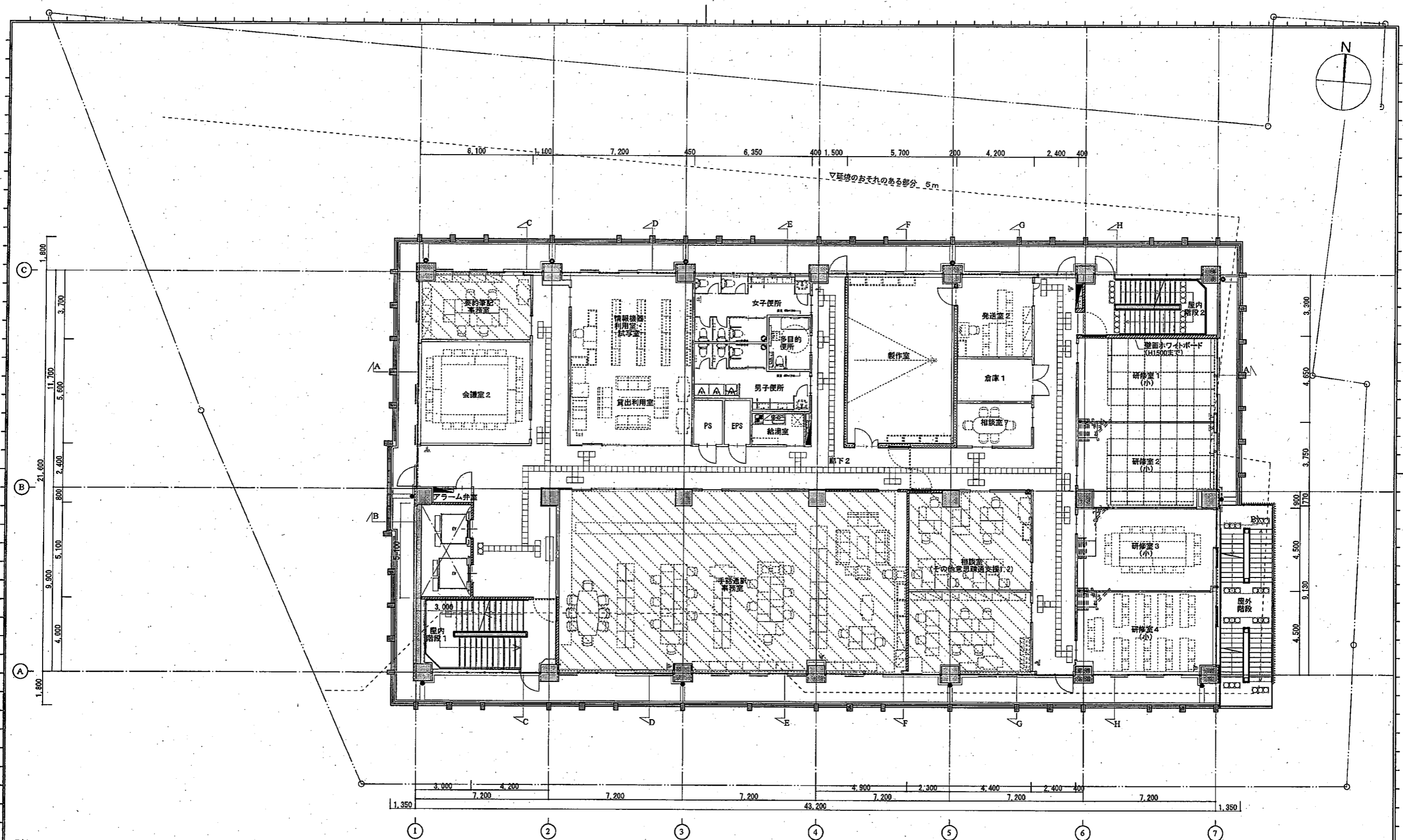
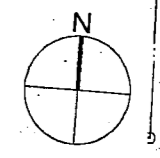
付近見取図



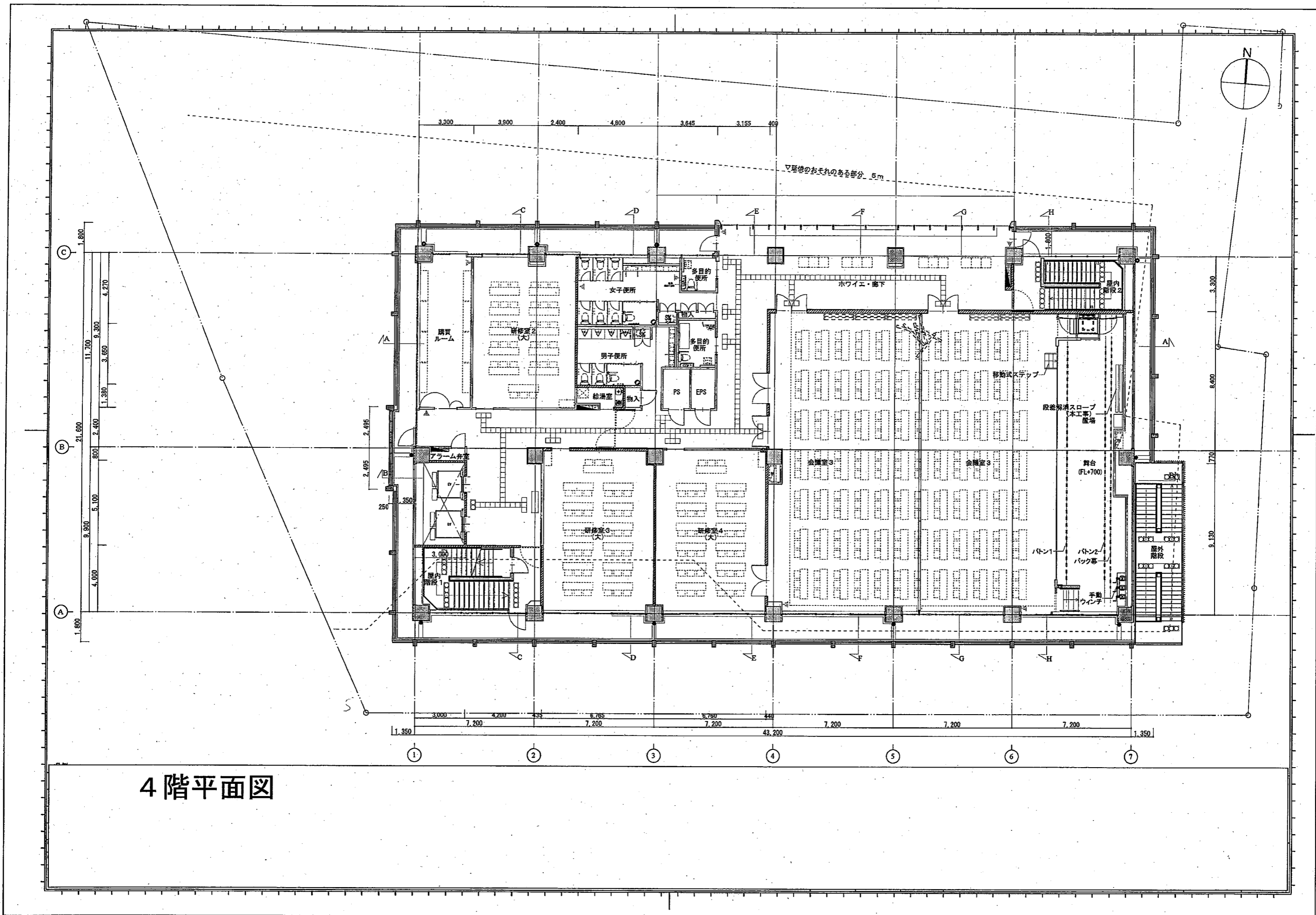
1階平面図



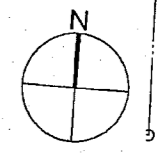
2階平面図



3階平面図



4階平面図



▽基礎のおそれのある部分 5m

室外機等
基礎 1200x400x600H x20
鋼材 H150x150 x 9000L x8本
[D-203]

地下室壁内で3通り壁透へ接続
アルミ製114φ

アルミ製89φ

消火器ボックス3台
(屋外用・保型型
SUS 10.6 HL)
伸縮目地

水勾配 1/100

消火器ボックス3台
(屋外用・保型型
SUS 10.6 HL)

アルミ製89φ

配管バックH1100
[D-802]

基礎 1800x1000x150H

空調機械室 基礎
1800x1000x150H

基礎 2100x1500x150H

基礎 1800x1000x150H

基礎 2100x1500x150H

燃料小出積基礎
2040x400x600H x2
[D-203]

非常用発電機
基礎 1800x400x600H x2
鋼材 H200x200 x2本
[D-203]

タラップ
5.400

アルミ製89φ
1.500

アルミ製89φ

タラップ

屋外キュービクル
基礎 600x600x600H x8
鋼材 H200x200 x2本

点検歩幅=600 [D-112]

水勾配 1/100

ハト小屋 [5-22-1]

会議室
上部吹抜

C

B

A

1

2

3

4

5

6

7

塔屋階平面図

11,800

11,700

21,600

9,900

1,800

1,350

7,200

7,200

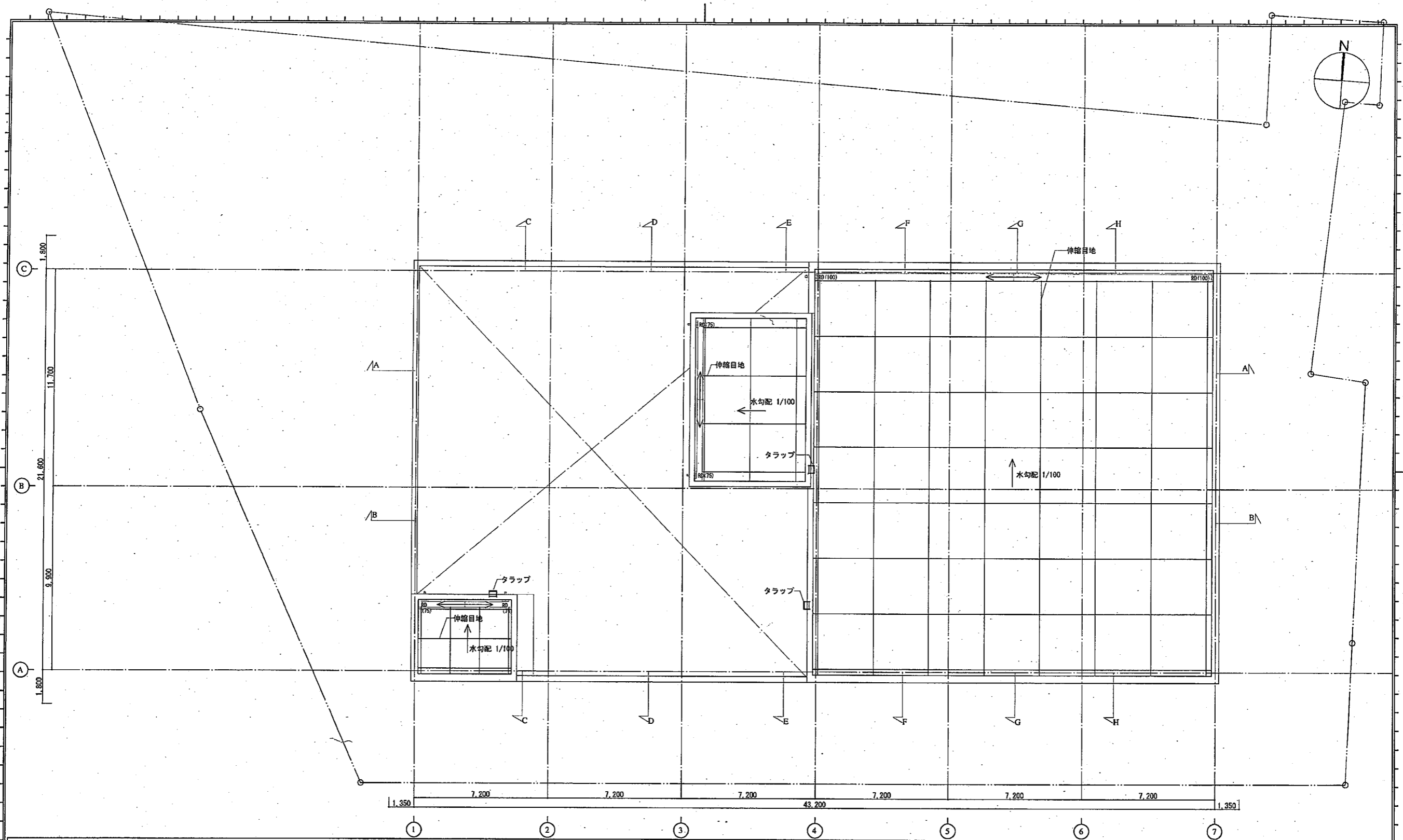
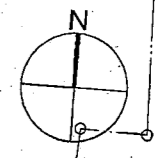
7,200

43,200

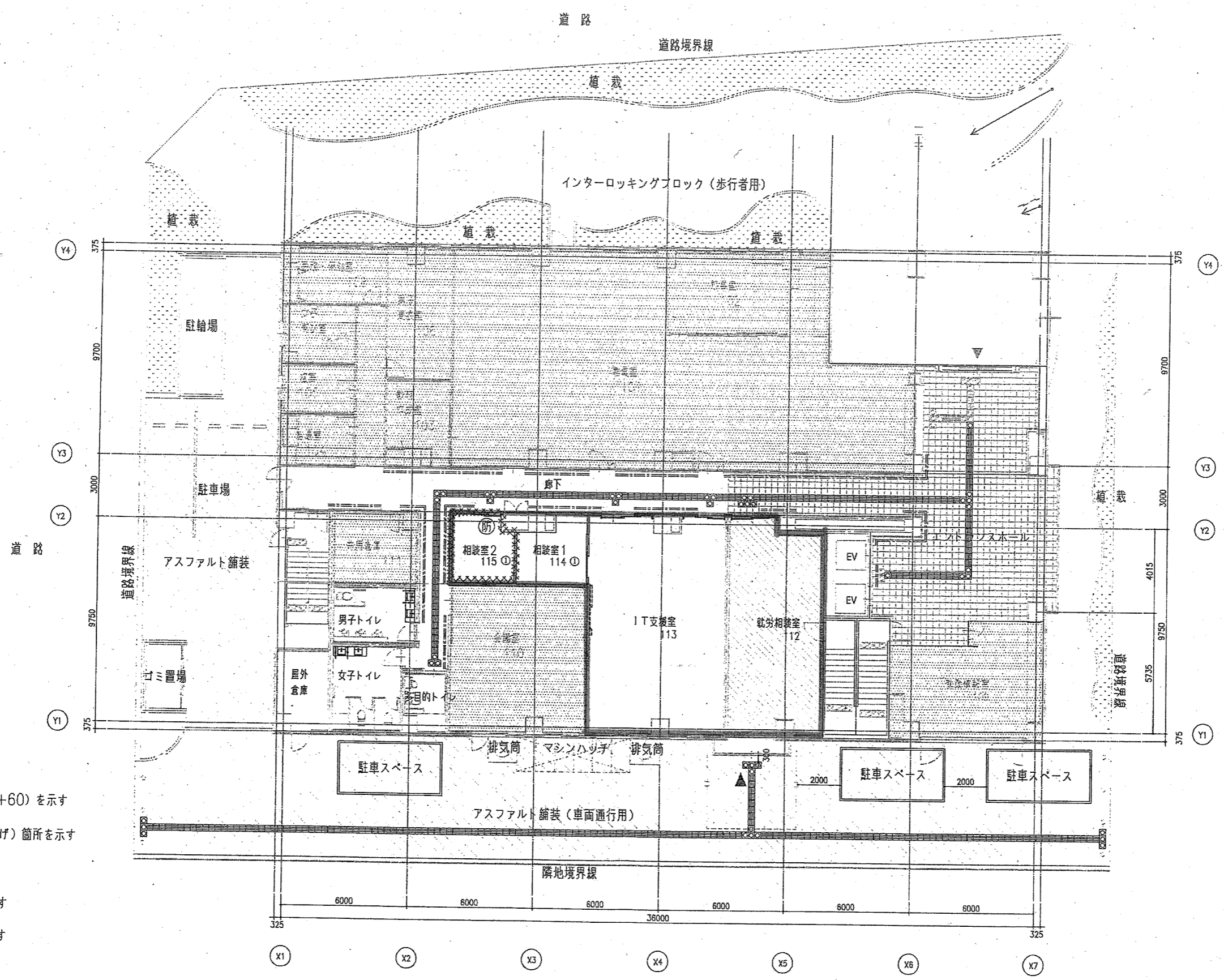
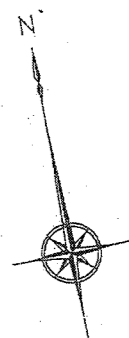
7,200

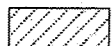

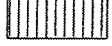
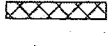



7,200

1,350

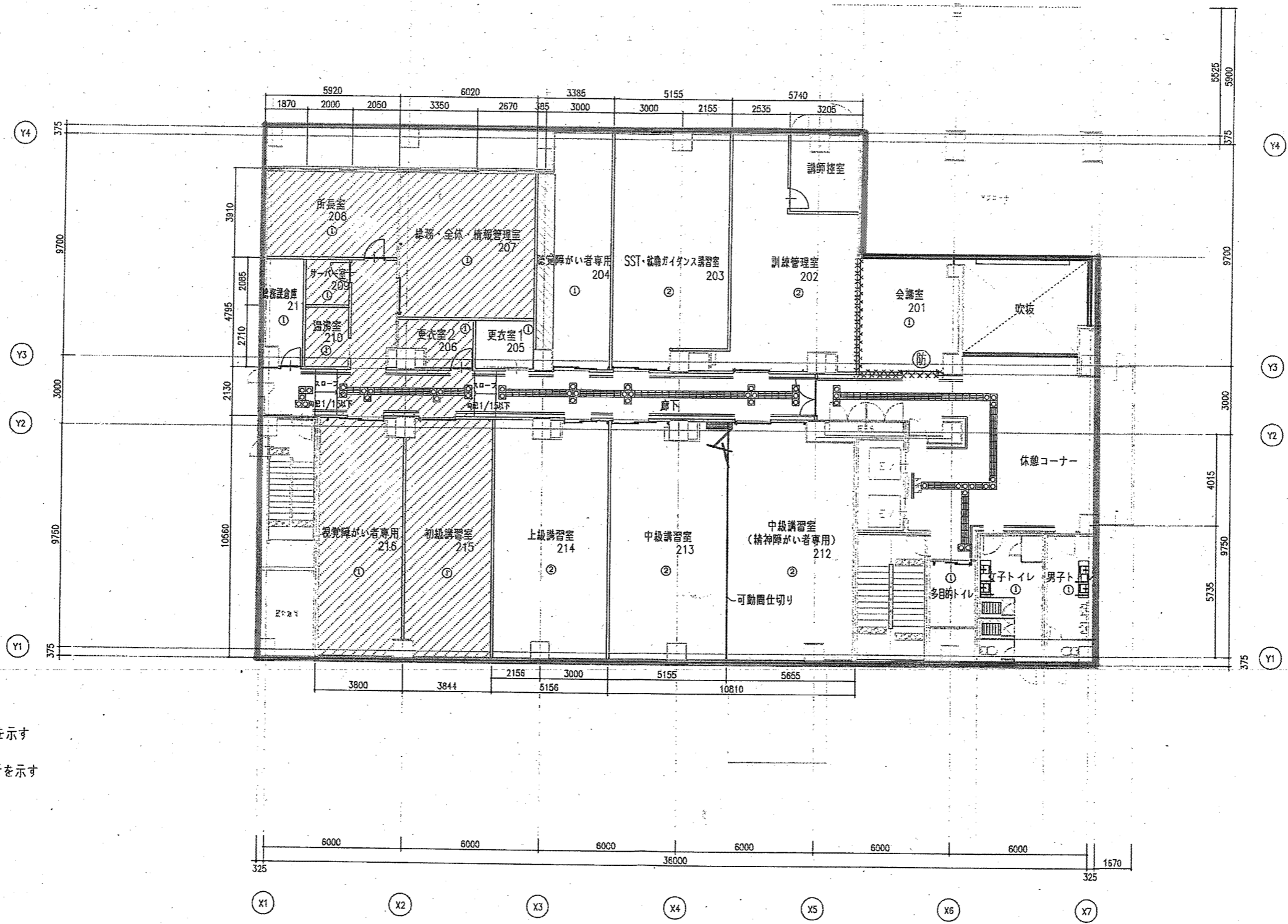
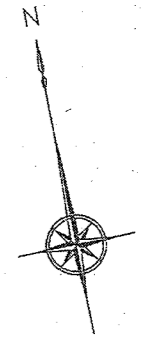



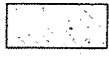

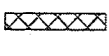
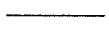


屋根伏図



- 凡例
-  OAフロア (+60) を示す
 -  床改修 (仕上げ) 箇所を示す
 -  床張り
 -  防火区画を示す
 -  改修箇所を示す
 -  手摺を示す
 -  特定防火設備を示す

1階平面図 (天王寺区上汐)



- 凡例
-  OAフロア (+60) を示す
 -  床改修 (仕上げ) 箇所を示す
 -  床研り
 -  防火区画を示す
 -  改修箇所を示す
 -  手摺を示す
 -  特定防火設備を示す

2階平面図 (天王寺区上汐)