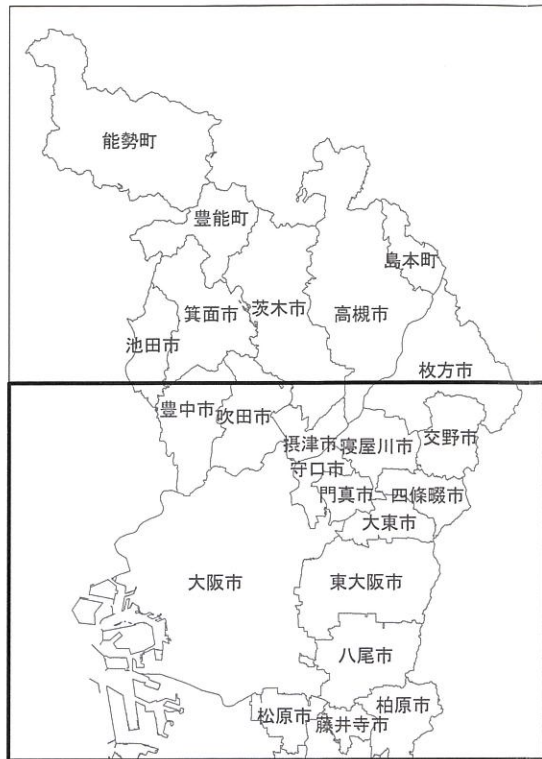


大阪府山地災害危険地区位置図 (中 部)





此花区

港区

大正区

西区

中央区

中央区

天王寺区

大阪市

住之江区

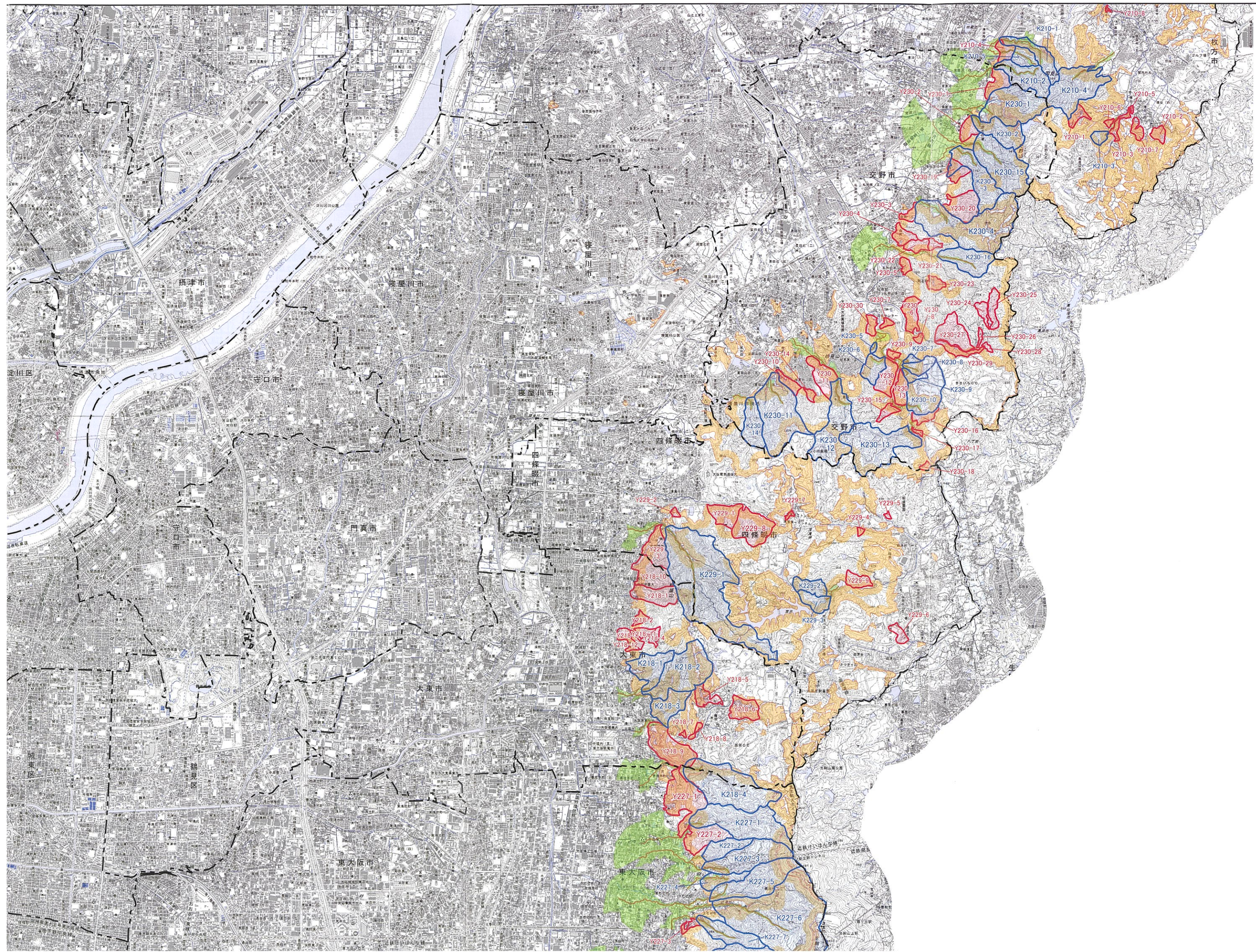
堺市堺区

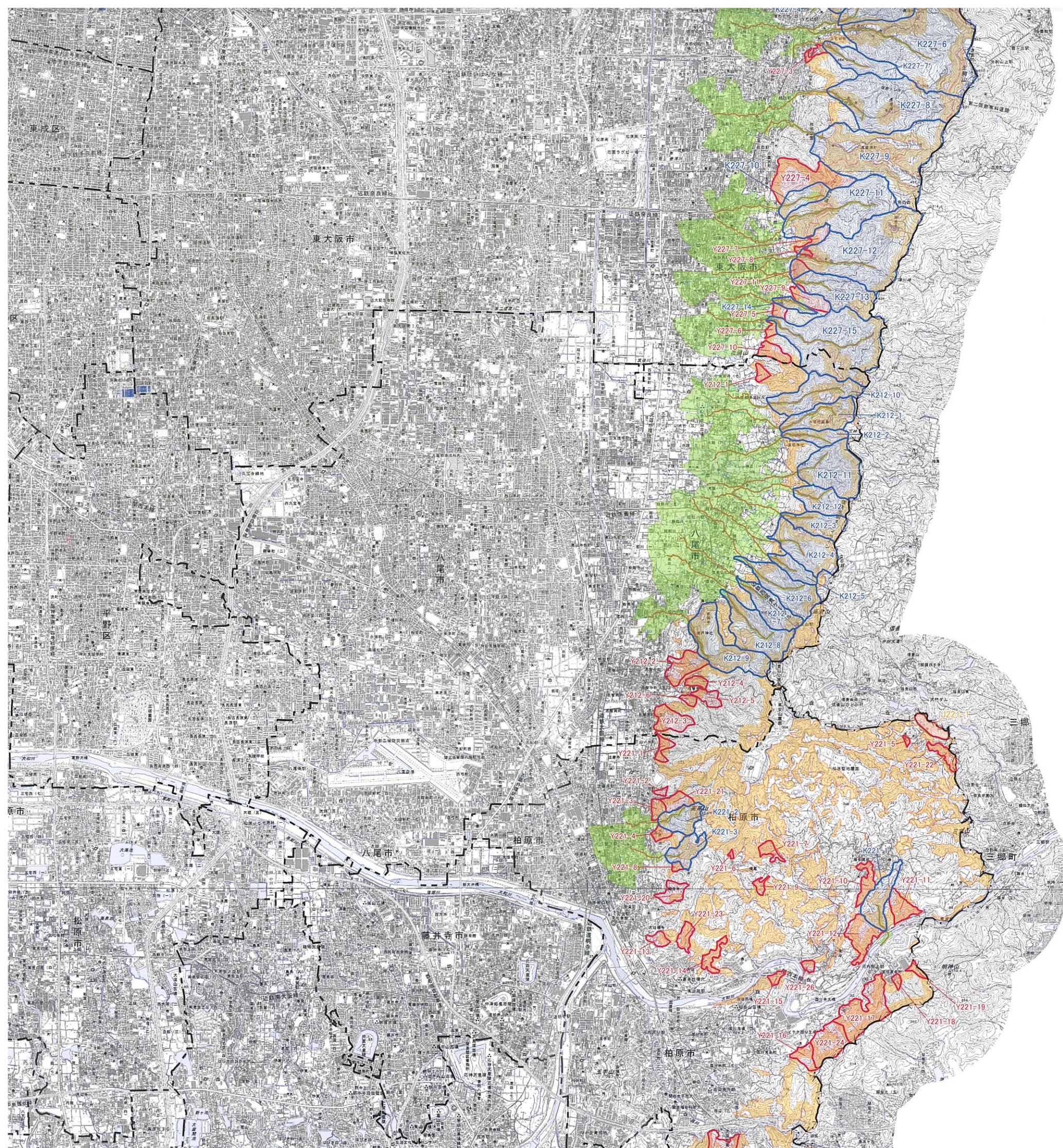
大阪市住吉区

北区

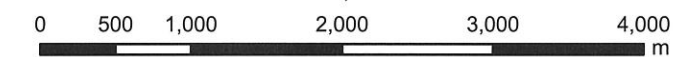
堺市






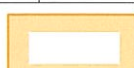


北区





1:50,000



凡 例	
地域森林計画対象民有林	
	山腹崩壊危険地区
	地すべり危険地区
	崩壊土砂流出危険地区
	崩壊土砂流出溪流
	崩壊土砂流出区間
	地域森林計画対象民有林
国有林	
	山腹崩壊危険地区(国有林)
	崩壊土砂流出溪流(国有林)